

# SALES OFFICES

*Oficinas De Ventas*

**REISA S.A.**

**Distributor for Chile**

**Phone : 56 -2 - 224 2751**

**Fax : 56 - 2 - 211 8632**

**E-Mail : reisa\_sa@yahoo.com**



## CORPORATE OFFICES

505 S. Redwood Rd.  
Lake City, UT 84104  
Tel. 801/974-5484  
Tel. 800/453-8812  
Fax 801/972-2041

## INTERNATIONAL OFFICE

5206 FM 1960 West  
Suite 103  
Houston, TX 77069  
Tel. 713/893-3908  
Fax 713/893-8371

100 E. Camelback Rd.  
Suite 101  
Phoenix, AZ 85016  
Tel. 602/956-2200  
Tel. 602/956-1503

600 Chicago Ave.  
Granite City, IL 62040  
Tel. 618/451-6148  
Fax 618/451-6166

10555 Lake Forest Blvd.  
Suite 7K  
New Orleans, LA 70127  
Tel. 504/241-9173  
Fax 504/246-3860

22 Wilcox Rd.  
Macon, GA 31205  
Tel. 209/931-9490  
Tel. 209/931-9493

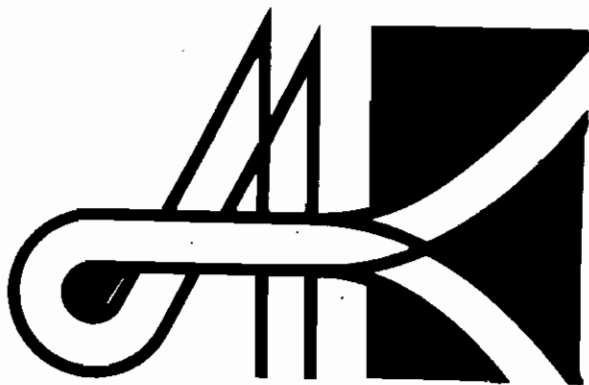
3rd & Ohio Street  
Gary, IN 46401  
Tel. 219/882-1411  
Tel. 800/962-1411  
Fax 219/882-6175

600 Commerce Dr.  
Suite 605  
Coraopolis, PA 15108  
Tel. 412/269-0393  
Fax 412/269-0396

11 Buckeye Rd.  
Macon, GA 30341  
Tel. 404/458-7804  
Tel. 800/654-0850  
Tel. 404/451-7389

2131 S. 74th Street  
Kansas City, KS 66106  
Tel. 913/375-1810  
Tel. 800/527-5276  
Fax 913-375-9374

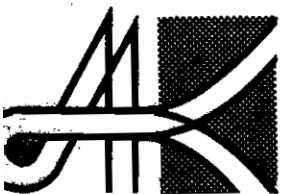
4816 River Road East  
Tacoma, WA 98443  
Tel. 206/926-0408  
Fax 206/926-0903



# A & K RAILROAD MATERIALS INC.

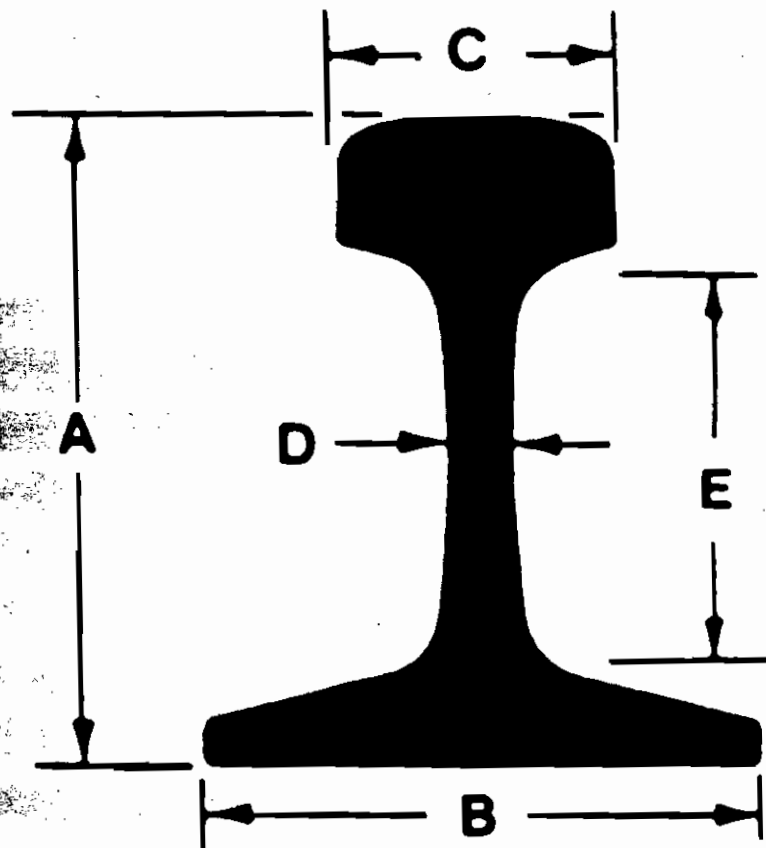


## RAIL HANDBOOK MANUAL DE RIELES



**A & K YOUR BEST "ONE SOURCE"; SUPPLIER OF QUALITY RAILS AND TRACK MATERIAL**

*Para riel y material ferroviario A & K es el mejor y mas completo proveedor*



**A - Height  
Peralte**

**B - Width of base  
Patin**

**C - Width of head  
Hongo**

**D - Web  
Alma**

**E - Fishing  
Asiento de eclisa**

**ALL DIMENSIONS ON THE FOLLOWING PAGES ARE SHOWN IN INCHES**

*Las Dimensiones En Las Páginas Siguientes Están En Pulgadas*

NOTE: dimensions in inches  
Dimensiones En Pulgadas

A AND K RAILROAD MATERIALS, INC.  
RAIL SECTIONS

RAIL Wt Lbs/Yd	TYPE OF RAIL	HEIGHT	BASE	HEAD	WEB	FISHING	BAR HEIGHT	ILLINOIS STEEL	TENNESSEE COAL/IRON	CARNEGIE STEEL	CAMBRIA STEEL	BETHLEHEM STEEL	MARYLAND PS CO	LACKAWANNA STEEL	COLORADO FUEL/IRON	NCRM	ALGOMA STEEL	DOMINION IRON/STEEL
8	ASCE	1-9/16	1-9/16	13/16	5/32	13/16	31/32	840	801	840	80	840	8A					
8		1-1/2	1-1/2	13/16	5/32	13/16	1					522	130					
12	ARA-B	2-3/64	1-3/4	39/64	3/16	1-3/32	1-5/16	1230										122
12		1-7/8	1-7/8	1-1/16	3/16		1-1/8					523	153					
14	ARA-B	2-3/64	1-29/32	1-1/64	9/32	1-3/32	1-5/16	1430										143
16		2-9/16	2	1-7/64	7/32	1-23/64	1-9/32	1630										162
16		2-1/4	2-1/4	1-1/4	15/64	1-15/64	1-1/2					553		16A				
18	ARA-B	2-7/16	2-5/64	1-3/16	19/64	1-23/64	1-19/32	1830										182
20	ARA-B	2-43/64	2-1/4	1-19/64	1/4	1-15/32	1-3/4	2030										203
20		2-1/2	2-1/2	1-3/8	19/64	1-23/64	1-11/16											20A
20		2-3/8	2-3/8	1-3/8	1/4		1-1/2					525	122					
25	ARA-B	2-13/16	2-1/2	1-29/64	9/32	1-31/64	1-26/32	2530										252
25	ASCE	2-3/4	2-3/4	1-1/2	19/64	1-31/64	1-13/16	2540	2502	2540	250	2540	25A	577		25AS	264	250
25		2-3/4	2-3/4	1-1/2	19/64		1-13/16					526	104					
30		3-1/4	3	1-21/32	5/16		2-1/16											
30	ASCE	3-1/8	3-1/8	1-11/16	21/64	1-23/32	2-3/32	3040	3002	3040	300	3040	30A	576		30AS		300
30		3	3-5/16	1-45/64	11/32		1-7/8											94
30		3	3	1-21/32	29/64		1-7/8											
35		3-13/32	3-1/32	1-25/32	11/32		2-1/8	3501	3501									
35	ARA-B	3-25/64	3	1-25/32	11/32	1-23/32	2-5/32	3530										252

NOTE: dimensions in inches  
Dimensiones En Pulgadas

A AND K RAILROAD MATERIALS, INC.  
RAIL SECTIONS

RAIL Wt Lbs/Yd	TYPE OF RAIL	WEIGHT	BASE	HEAD	WEB	FISHING	BAR HEIGHT	ILLINOIS STEEL	TENNESSEE COAL/IRON	CARNEGIE STEEL	CAMBRIA STEEL	BETHLEHEM STEEL	MARYLAND PS CO	LACKAWANNA STEEL	COLORADO FUEL/IRON	NCRM	ALGOMA STEEL	DOMINION IRON/STEEL
35	ASCE	3-5/16	3-5/16	1-3/4	23/64	1-25/32	2-3/16	3540	3502	3540	35A	575		35AS	350	351		
35		3-1/4	3-1/4	1-3/4	23/64	1-43/64	2-1/8					546			265			
40		3-1/2	3-1/2	1-27/32	3/8		2-3/16	4001			508	90						
40		3-5/16	3-1/2	1-7/8	7/16		1-3/4	4003										
40	ARA-B	3-35/64	3-3/16	1-53/64	3/8	1-55/64	2-1/4	4030									403	
40		3-1/2	3-1/2	1-29/32	25/64		2-5/32						32					
45		3-11/16	3-3/4	2	13/32		2-3/16	4501										
45		3-3/4	3-1/4	2	3/8		2-5/16	4503										
45	ARA-B	3-47/64	3-3/8	1-63/64	13/32	1-31/32	2-13/32	4530										
45		3-5/8	3-5/8	1-15/16	13/32		2-1/16						36					
45		3-3/4	3-1/2	2	13/32		2-3/8						239					
45		3-11/16	3-3/4	2											450			
48		3-7/8	3-107/128	2-11/128			2-1/2	4802										
48	ARA-B	3-49/64	3-29/64	2-1/16	21/64	1-31/32	2-13/32	4830										
48		4	4	1-29/32	3/8	2	3-3/8						88					
50		3-15/16	3-1/2	2	25/64		2-1/4	5001										
50		4	3-7/8	2-1/8	13/32		2-1/2	5003										
50	ASCE	3-7/8	3-7/8	2-1/8	7/16	2-1/16	2-9/16	5040	5005	5040	500	5040	50A	542	50AS	129	500	500
50		4	4	2-3/32	13/32		2-13/32										37A	
50		3-3/4	3-3/4	2.08	0.49												26	

NOTE: dimensions in inches  
Dimensiones En Pulgadas

A AND K RAILROAD MATERIALS, INC.  
RAIL SECTIONS

RAIL Wt Lbs/Yd	TYPE OF RAIL	HEIGHT	BASE	HEAD	WEB	FISHING	BAR HEIGHT	ILLINOIS STEEL	TENNESSEE COAL/IRON	CARNEGIE STEEL	CAMBRIA STEEL	BETHLEHEM STEEL	MARYLAND PS CO	LACKAWANNA STEEL	COLORADO FUEL/IRON	MCRM	ALGOMA STEEL	DOMINION IRON/STEEL
50		4-1/8	4	2-1/16	7/16		2-5/8						105					
50		3-15/16	4-1/4	2-1/8	7/16		2-5/16											
50		4-3/8	3-15/16	2-1/64				5078										
																		521
52		4	3-7/8	2-13/64	13/32		2-3/8	5202										28
52		3-61/64	3-55/64	2-11/64	29/64		2-7/16	5204										
52		3-15/16	4-1/4	2-1/8	7/16		2-1/4	5206										
52	ATSF	4	3-3/4	2-3/32	7/16		2-3/8					109						St. Louis Steel-1881 V.
55		4	4	2-11/32	15/32								31					
56		4	3-7/8	2-5/16	1/2		2-7/16	5601										
56	ATSF	4	4	2-15/64	33/64		2-5/16	5603										S.I.
56		4	3-13/16	2-5/32	1/2		2-1/4	5605										
56		4	3-29/32	2-5/16	15/32		2-5/16	5607										
56		4	3-47/64	2-21/64	29/64		2-3/8	5609										
56		4-1/4	3-3/4	2-3/16	7/16		2-7/16	5611										
56		4	4-1/4	2-3/16	13/32		2-5/8	5614										
56		4-1/4	4-1/8	2-1/4	3/8		2-9/16	5633 5616		5633	56H		90					
56		4-1/4	4-1/32	2-9/32	37/64		2-19/32					56J		51				
56	ASCENodif	4-1/16	4-11/128	2-35/128	63/128	2-45/256	2-31/32											550 X

NOTE: dimensions in inches  
Dimensiones En Pulgadas

A AND K RAILROAD MATERIALS, INC.  
RAIL SECTIONS

RAIL Wt Lbs/Yd	TYPE OF RAIL	HEIGHT	BASE	HEAD	WEB	FISHING	BAR HEIGHT	ILLINOIS STEEL	TENNESSEE COAL/IRON	CARNEGIE STEEL	CAMBRIA STEEL	BETHLEHEM STEEL	MARYLAND PS CO	LACKAWANNA STEEL	COLORADO FUEL/IRON	NCRM	ALGOMA STEEL	DOMINION IRON/STEEL
56		4-1/4	4	2-9/32	1/2		2-5/8									27-A		
56		4	3-29/32	2-3/16	1/2		2-3/8									41		
56		4	3-13/16	2-9/32	7/16		2-3/8									47		
56		4	3-3/4	2-5/16	25/64		2-13/32						9					
56		4-1/4	4	2-1/4	11/32								34					
56		4-1/64	2-23/32	2-25/32	31/64		2-9/32						39					
56	Pear Head	4	3-3/4	2-5/16	35/64		2-7/8											52
56		4-3/32	4	2-5/16	1/2		2-9/16											107
56		4-1/4	4-13/64	2-9/64	23/64		2-9/16				512	190						
56.3	ASCE	4-1/4	4-5/32	2-9/32	25/64	2-13/64	2-25/32								600 X			
58		4-1/4	4-5/32	2-9/32						58H								
58		4	3-7/8	2-11/32	1/2	1-59/64	2-3/8				511	54						
58		4-1/4	4-1/4	2-3/16	17/32		2-5/8						7					
58		4	4	2-5/16	15/32													65
58-1/4		4	4	2-11/32	1/2		2-3/8											63
59		4-9/32	3-3/4	2-1/4	7/16		2-1/2											87
60		4-1/4	4-1/4	2-11/32	15/32		2-5/8	6001										6002
60		4-17/64	4-11/64	2-33/64	1/2		2-5/8											6004
60		4-1/16	3-29/32	2-7/16	17/32		2-7/16											6006

NOTE: dimensions in inches  
Dimensiones En Pulgadas

A AND K RAILROAD MATERIALS, INC.  
RAIL SECTIONS

RAIL Wt Lbs/Yd	TYPE OF RAIL	HEIGHT	BASE	HEAD	WEB	FISHING	BAR HEIGHT	ILLINOIS STEEL	TENNESSEE COAL/IRON	CARNEGIE STEEL	CAMBRIA STEEL	BETHLEHEM STEEL	MARYLAND PS CO	LACKAWANNA STEEL	COLORADO FUEL/IRON	NCRM	ALGOMA STEEL	DOMINION IRON/STEEL		
60		4-1/4	4-1/4	2-1/4	1/2		2-19/32	6007		60R										
60		4-1/4	4-1/4	2-3/8	1/2		2-9/16	6009												
60		4-1/4	4-5/64	2-21/64	29/64		2-9/16	6011												
60		4-1/4	4-1/8	2-3/8	35/64		2-19/32	6013		60M										
60	ASCE	4-1/4	4-1/4	2-3/8	31/64	2-17/64	2-25/32	6040	6015	6040	600	6040	60A	533		244	600	603	105	6001
60	ARA-A	4-1/2	4	2-1/4	15/32	2-29/64	2-31/32	6020	6020	602	6020	60RA	568						121	
60		4-1/2	4-3/8	2-1/2					6087											
60		4	4-1/32	2-3/8	19/32		2-7/16			60P		173								
60		4-1/4	4-1/4	2-3/8	1/2		2-5/8										6		52	
60		4	3-3/4	2-7/16	9/16														4	
60		4-1/32	4-1/4	2-13/32															23	
60		4-1/32	4-1/4	2-5/16	13/32														49	
60		4-1/4	4	2-3/16	1/2														60	
60		4-1/32	4-1/4	2-5/16	15/32		2-3/8												133	
60		4-1/4	4-1/4	2-5/16	7/16		2-9/16												177	
60		4	3-7/8	2-13/32	1/2		2-1/2												514	95
60	High Tee	6	5	2-1/8	11/32		4-1/2												510	185
60		4-1/4	4-1/8	2-5/16	1/2		2-5/8												112	
60	Pear Head	4-1/4	4-1/4	2-11/32	1/2		2-3/8												129	
60	Pear Head	4-1/32	4-1/16	2-11/64	19/32		2-1/4												38	

NOTE: dimensions in inches  
Dimensiones En Pulgadas

A AND K RAILROAD MATERIALS, INC.  
RAIL SECTIONS

RAIL Wt Lbs/Yd	TYPE OF RAIL	HEIGHT	BASE	HEAD	WEB	FISHING	BAR HEIGHT	ILLINOIS STEEL	TENNESSEE COAL/IRON	CARNEGIE STEEL	CAMBRIA STEEL	BETHLEHEM STEEL	MARYLAND PS CO	LACKAWANNA STEEL	COLORADO FUEL/IRON	NCRM	ALGOMA STEEL	DOMINTON IRON/STEEL
60	Pear Head	4-1/4	4-1/4	2-7/32	17/32		2-11/16											
60	Pear Head	4	4-1/32	2-9/32	19/32		2-3/8											
60	Pear Head	4	3-3/4	2-3/16	9/16		2-1/4											
61		4-1/2	4-1/4	2-5/16	1/2	2-15/32	3-1/16											
61		4-1/32	4	2-3/8	9/16		2-7/16											
61-1/2		4-1/4	4-1/4	2-5/16							61-1/2M							
62	High Tee	6	5-1/2	2-1/8	11/32		4-1/2											
62		4-5/16	4-3/8	2-11/32	1/2		2-5/8											
62-1/2		4-1/4	4-1/4	2-21/64	9/16		2-5/8											
62-1/2		4-1/4	4-7/32	2-19/64	15/32													
63		4-5/16	4-3/8	2-11/32	1/2		2-19/32											
63		4-1/4	4-1/4	2-3/8	1/2		2-9/16	6301		63-H								
63		4-3/8	4-7/16	2-3/8	29/64		2-9/16	6501										
63		4-3/8	4-3/8	2-1/2	7/16		2-5/8	6503										
63		4-3/8	4-5/8	2-3/8	17/32		2-7/8	6505										
65	ASCE	4-7/16	4-7/16	2-13/32	1/2	2-3/8	2-29/32	6540	6507	6540	650	6540	65-A	534	65A	236	650	653
65		4-1/2	4-1/4	2-13/32	1/2													
65		4-3/8	4-3/8	2-17/32	15/32													
65		4-17/32	4-3/16	2-1/4	31/64		2-5/8				518	132						

NOTE: dimensions in inches  
Dimensiones En Pulgadas

A AND X RAILROAD MATERIALS, INC.  
RAIL SECTIONS

RAIL Wt Lbs/Yd	TYPE OF RAIL	HEIGHT	BASE	HEAD	WEB	FISHING	BAR HEIGHT	ILLINOIS STEEL	TENNESSEE COAL/IRON	CARNEGIE STEEL	CAMBRIA STEEL	BETHLEHEM STEEL	MARYLAND PS CO	LACKAWANNA STEEL	COLORADO FUEL/IRON	NCRM	ALGOMA STEEL	DOMINION IRON/STEEL
65		4-1/2	4-29/64	2-13/32	1/2	2-9/64	2-5/8				515	55						
65		4-1/2	4-3/16	2-1/4	1/2		2-9/16											50
65		4-1/2	4-3/8	2-3/16														
66		4-13/32	4-7/16	2-13/32	15/32		2-5/8	6601										
66	ATSF	4-11/32	4-9/16	2-3/8	7/16		2-5/8	6602		66-B	667							
66		4-1/8	4-1/2	2-15/32	1/2		2-11/32	6603		66-K								
66		4-3/8	4-1/2	2-1/2	7/16		2-3/4						27					
66		4-3/8	4-1/2	2-1/2	7/16		2-3/4						112					
67		4-1/2	4-3/8	2-13/32	1/2		2-19/32	6701										
67		4-1/2	4-1/2	2-13/32	1/2	2-3/8	2-11/16	6733	6704	6733	67-H							
67		4-1/2	4-1/2	2-13/32	1/2		2-5/8	6705										30
67		4-13/16	4-7/16	2-3/8							67-L							
67		4-1/2	4	2-17/32	41/64		2-3/4					29						
67.3		5-5/128	4-21/64	2-23/64							587							
68		4-9/16	4-1/2	2-3/8	15/32						92							
68		4-1/2	4-1/2	2-15/32	1/2		2-3/4						62					
68		4-1/2	4-3/8	2-1/4	1/2		2-5/8			68-B	516							
68		4-1/2	4-3/8	2-1/4	1/2		2-5/8			68-1/2P								
69		4-1/2	4-1/2	2-13/32	1/2								3					
70		4-1/2	4-1/2	2-1/2	1/2		2-11/16	7001				125						

NOTE: dimensions in inches  
Dimensiones En Pulgadas

A AND K RAILROAD MATERIALS, INC.  
RAIL SECTIONS

RAIL Wt Lbs/Yd	TYPE OF RAIL	HEIGHT	BASE	HEAD	WEB	FISHING	BAR HEIGHT	ILLINOIS STEEL	TENNESSEE COAL/IRON	CARNEGIE STEEL	CAMBRIA STEEL	BETHLEHEM STEEL	MARYLAND PS CO	LACKAWANNA STEEL	COLORADO FUEL/IRON	NCRM	ALGOMA STEEL	DOMINION IRON/STEEL			
70		4-3/8	4	2-35/96	35/64		2-7/16	7002													
70		4-3/4	4-3/4	2-29/64	1/2		2-5/4	7003													
70		4-3/4	4-3/4	2-7/16	1/2	2-1/8	2-11/16	7033	7005	7033	70-H	504	155				57				
70		4-3/4	4-3/4	2-11/32				7006													
70		4-51/96	4-3/4	2-19/48	1/2		2-11/16	7007													
70	ASCE	4-5/8	4-5/8	2-7/16	33/64	2-15/32	3	7040	7010	7040	700	7040	70-A	532		70A	237	700	701	104	7001
70		4-5/8	4-5/8	2-7/16	31/64		2-7/8	7011									298	707			
70		4-5/8	4-5/8	2-5/8	17/32	2-5/8	3-1/4	7014													
70	ARA-A	4-9/4	4-1/4	2-3/8	1/2	2-1/2	3-1/16	7020	7020	7020	702	7020	70RA	567							
70		4-1/2	4-1/2	2-13/32	9/16		2-5/8	7030	7030	7030	703	7030	70RB	570							
70	B B A Std	4-3/4	4-3/4	2-7/16	1/2	2-19/32	3-1/8														
70	High Tee	7	5	2-3/16	13/32		5-7/16														
70		4-7/16	4-9/16	2-29/64	7/16		2-5/8														
71		4-1/2	4-1/2	2-7/16	1/2		2-5/8														
71		4-1/4	5-1/2	2-13/32	1/2		2-7/16	7102													
72		4-3/4	4-3/4	2-3/8	9/16	2-1/2	3-1/16	7250	7201												
72		4-3/4	4-3/4	2-1/2	9/16		3-1/8	7202													
72		4-3/4	4-3/4	2-3/8	9/16		3	7206													
72		4-3/4	4-3/4	2-7/16	33/64	2-15/32	3														
73		4-15/16	4-15/16	2-1/2	1/2		3-1/4	7301													
74		4-11/16	4-1/2	2-3/8	1/2		4-1/4														
74	NYNKBH	4-11/16	4-3/4	2-7/16	9/16	2-3/16	2-3/16														
75		4-3/4	4-1/2	2-1/2	1/2		2-11/16	7501													

NOTE: dimensions in inches  
Dimensiones En Pulgadas

A AND K RAILROAD MATERIALS, INC.  
RAIL SECTIONS

RAIL Wt Lbs/Yd	TYPE OF RAIL	HEIGHT	BASE	HEAD	WEB	FISHING	BAR HEIGHT	ILLINOIS STEEL	TENNESSEE COAL/IRON	CARNEGIE STEEL	CAMBRIA STEEL	BETHLEHEM STEEL	MARYLAND PS CO	LACKAWANNA STEEL	COLORADO FUEL/IRON	NCRM	ALGOMA STEEL	DOMINION IRON/STEEL
75		4-3/4	4-3/4	2-1/2	17/32		2-15/16	7502										
75		5	5	2-39/64	19/32		3-1/16	7504										
75	ASCE	4-13/16	4-13/16	2-15/32	17/32	2-35/64	3-1/8	7540 7506 7540	750 7540	75A 529		75A	214	750	753			
75	High Tee	7	5.57	2.195	0.445		5-3/8	7508										
75	Mo. Pac	4-3/4	4-3/4	2-9/16	9/16	2-15/32	3-1/16	7550 7512		7550 750	528 541	75M.P	248	754				
75		4-3/4	4-3/4	2-9/16	9/16	2-15/32	3-1/16	7514					75C	289	756			
75	LPRR	4-15/16	4-7/16	2-7/16	33/64	2-5/8	3-1/4	7524 7524 7524	755						757			
75		4-59/64	4-1/2	2-1/2				751	753									
75		4-3/4	4-3/4	2-1/2	9/16		3-1/4							75E			87	
75	NR of M	5	5	2-3/4	1/2	2-7/8	3-7/16										92	
75		5	5	2-3/8	17/32	2-5/8	3-3/8										128	
75		5	5	2-9/16	33/64	2-13/16	3-11/16										221	
75		5	5	2-1/2	1/2	2-39/64	2-7/8										249	
75		5	5	2-9/16										75C	755			
75		5	5	2-9/16	33/64	2-5/8								75D				
75		5	5	2-9/16													75B	
76		4-3/4	5	2-1/2	1/2		2-13/16										76L	
77-1/2	G.N.	5	5	2-7/8	5/8	2-1/2	3-1/8	7701		7701	548						775	
79		4-3/4	4-3/4	2-23/32	5/8	2-7/32	2-13/16	7801									78A	
79-1/2		5-3/16	5-3/16														79F	
80		5	5	2-1/2	9/16		3-3/16	8001									80B	

Dimensions in inches  
Dimensiones En Pulgadas

A AND K RAILROAD MATERIALS, INC.  
RAIL SECTIONS

TYPE OF RAIL	HEIGHT	BASE	HEAD	WEB	FISHING	BAR HEIGHT	ILLINOIS STEEL	TENNESSEE COAL/IRON	CARNEGIE STEEL	CAMBRIA STEEL	BETHLEHEM STEEL	MARYLAND PS CO	LACKAWANNA STEEL	COLORADO FUEL/IRON	NCRM	ALGOMA STEEL	DOMINION IRON/STEEL	
	5	5	2-9/16	9/16		3-1/8	8002											
ABCE	5	5	2-1/2	35/64	2-5/8	3-3/16	8040	8004 8040	800	8040	80A	530	80A	251	800	800	100	8001
	5-1/8	5	2-21/32	17/32		3-7/16	8022	8008		8022	80K	534	543	800				
	5	5	2-9/16	35/64		3-5/16	8010							802			115	
	4-15/16	4-7/16	2-7/16	35/64	2-15/32	3	8030	8030 8030		8020	80RB	566		169	8031	801		
	5	5	2-1/2							80C							128	8003
Dudley	5-1/8	5	2-21/32	19/32	2-3/4	3-7/16						220		801				
High Tee	7	6	2-1/2	7/16	5-1/32	5-9/16						277						
	5	5	2-1/2														8004	
High Tee	7	6	2-1/2	7/16	5	5-7/16				560				817				
	5-3/16	5	2-9/16	1/2		3-1/8	8501							850				
ABCE	5-3/16	5-3/16	2-9/16	9/16	2-3/4	3-5/16	8540	8504 8540	850	8540	85A	531	85A	235	850	851	124	8503 Union
No. Pac	5-7/32	5-1/4	2-15/32	75/128	2-13/64	3-5/32	8550	8507 8550	855	8550	850		853	850			127	
MPSSH	5-3/8	4-7/8	2-1/2	9/16	2-29/32	3-1/2	8520	8520		8520	85R			858			853	
Dudley	5-1/4	5	2-11/16	17/32	2-3/4	3-3/8	8522	8522 8522	854				85E	261	851			
PRR	5-1/8	4-5/8	2-1/2	17/32	2-11/32	3-1/8	8531	8530		8531	85PS	559	85D	67A	8530			
	5-3/16	5-3/16	2-9/16				8587											
	5-1/4	4-1/2	2-1/2	9/16	2-9/32	3-3/8								156				
	5	5	2-11/16	9/16		3-1/16				506	163							

NOTE: dimensions in inches  
Dimensiones En Pulgadas

A AND K RAILROAD MATERIALS, INC.  
RAIL SECTIONS

RAIL Wt Lbs/Yd	TYPE OF RAIL	HEIGHT	BASE	HEAD	WEB	FISHING	BAR HEIGHT	ILLINOIS STEEL	TENNESSEE COAL/IRON	CARNEGIE STEEL	CAMBRIA STEEL	BETHLEHEM STEEL	MARYLAND PS CO	LACKAWANNA STEEL	COLORADO FUEL/IRON	NCRM	ALGOMA STEEL	DOMINION IRON/STEEL	
85		5-1/8	5	2-7/16														8501	
85	DBRG	5-1/4	5-1/4	2-1/2	9/16	2-5/8	3-1/4											850	
90	IRT	5	5	2-7/8	11/16	2-21/32	3	9050	9001			90E	77	902					
90	UP	5-3/4	5-3/8	2-3/4	17/32	3-3/8	4	9023	9003	9023	901	9023	90S					901	
90	ARA-A	5-5/8	5-1/8	2-9/16	9/16	3-5/32	3-13/16	9020	9020	9020	902	9020	90RA	563	900	170	9031	902	119
90	GM	5-3/8	5	2-5/8	9/16	2-7/8	3-11/16	9024	9024			90B	160	9030	904				
90	CMV	5-13/32	5-3/32	2-1/2	1/2	2-21/32	3-1/2	9035	9035										
90		5-3/32	5-1/8	1-59/64											9029				
90		5-9/16		2-3/4															
90	NYCDudley	5-1/2	5	2-21/32	9/16	3-1/32	3-3/4					900Y						901	
90.9	GM	5-3/8	5	2-5/8	9/16	2-7/8	3-7/16											908	
91	High Tee	7	6	2-3/4	9/16	4-31/32	5-7/16						282		917				
95	High Tee	7	6	3	17/32	4-19/64	5-1/2						272		957				
98		5-23/32	5															305	
100	PRR	5-1/2	5-1/2	2-13/16	5/8	2-11/16	3-5/8	10033	10002		100H	520	96		1003				
100	NYNH	6	5-1/2	2-3/4	19/32	3-11/32	3-5/16	10034	10044		10034	100N		100B	100			1002	
100	ARA-A	6	5-1/2	2-3/4	9/16	3-3/8	4	10020	10020		10020100RA	565	100F	163	10031	1003		120	
100	ARA-B	5-41/64	5-9/64	2-21/32	9/16	2-55/64	3-7/16	10030	10030		10030100RB	564	100G	161	10032	1002		126	
100	Reading	5-5/8	5-3/8	2-21/32	9/16	2-53/64	4	10032	10032		10032100PR		100K	165					

TYPE dimensions in inches  
 Versiones En Pulgadas

A AND K RAILROAD MATERIALS, INC.  
 RAIL SECTIONS

TYPE OF RAIL	HEIGHT	BASE	HEAD	WEB	FISHING	BAR HEIGHT	ILLINOIS STEEL	TENNESSEE COAL/IRON	CARNEGIE STEEL	CAMBRIA STEEL	BETHLEHEM STEEL	MARYLAND PS CO	LACKAWANNA STEEL	COLORADO FUEL/IRON	NCRM	ALGONA STEEL	DOMINION IRON/STEEL
CB&W	5-45/64	5-9/64	2-9/16	9/16	2-61/64	3-1/2	1003510035	10035			1000M						
	5-9/16	5	2-21/32				1005010050										
	5-7/16	5-3/8	2-3/4	5/8	2-11/16	3-5/16	10133										
	5.9999	5.3740	2.7953	0.5630	3.2795	4											1004
Dudley	6	5-1/2	3	5/8	3-13/32	4-1/8	1052410524				1058		1051				
	6-3/16	5-1/2	2-21/32	19/32	3-3/8						1056	306	1052				1050
	6-1/4	5-1/2	2-25/32	19/32	2-13/32	4-1/16	1102511025				1070	100A	1072				1100
	6-1/2	5-1/2	2-3/4	19/32	3-3/4	4-3/8	1103611036			572							
	6-5/8	5-1/2	2-23/32	19/32	3-13/16	4-7/16	1122511225										1121
	6-13/16	5-1/2	2-11/16	19/32	3-15/16												1130
	6-1/2	5-1/2	3	5/8	3-3/4	4-1/2	1152311523		1152211523	Dudley							
	6-1/4	5-3/4	2-7/8	5/8	3-5/32	3-13/16				573		177					
	7-5/16	6	2-5/8	21/32	4-9/32		1292912929										
	6-3/4	6	2-15/16	21/32	3-11/16	4-3/8	1302513025				130RE						1300
	6-15/16	6	2-27/32	21/32	3-11/16		13027				130REG						

1003!

NOTE: dimensions in inches  
Dimensiones En Pulgadas

A AND K RAILROAD MATERIALS, INC.  
RAIL SECTIONS

RAIL Wt Lbs/Yd	TYPE OF RAIL	HEIGHT	BASE	HEAD	WEB	FISHING	BAR HEIGHT	ILLINOIS STEEL	TENNESSEE COAL/IRON	CARNEGIE STEEL	CAMBRIA STEEL	BETHLEHEM STEEL	MARYLAND PS CO	LACKAMANNA STEEL	COLORADO FUEL/IRON	NCRM	ALGOMA STEEL	DOMINION IRON/STEEL
130		6-27/32	6	2-55/64	21/32	3-11/16	3-15/16								1301			
131	AREA	7-1/8	6	3	21/32	4-3/16	4-7/8	1312513128				131			1311			
132	Head Free	7-5/16	6	3	21/32	4-3/16	4-7/8	13225				132RE			1320			
133	AREA	7-1/16	6	3	11/16	3-15/16		13331				133RE			1330			
135	C.of NJ	6-1/2	6	3-5/32	3/4	3-9/32	4-1/16					135CR	290					
136	LV	7	6-1/2	2-15/16	21/32	3-7/8	4-1/16	1363313633				136LV						
136	LV	7	6-1/2	2-15/16	11/16	3-7/8						136LVM						
140		7-5/16	6	3	3/4	4-1/16		1402514025				140PS						
150	AREA	7-3/4	6-3/4	3-1/8	11/16	4-9/16	5-5/16	1502515025										
150	CraneRail	6	6	4	1	3-7/64					539							
152	AREA	7	6-1/4	3	11/16	4-5/32		1522215222										
152	PRR	8	6-3/4	3	11/16	4-7/8		15224	15224	15224		152PS						
155		8	6-3/4	3	3/4	4-21/32		15531	15531	15531		155PS						
100	ARA-A	6-5/32	5-1/2	2-11/16	9/16	3-3/8						100RAT						
110	AREA	6-7/16	5-1/2	2-11/16	19/32	3-13/32		11027	11027	11027		110RET						
113	AREA	6-13/16	5-1/2	2-11/16	19/32	3-15/16		11327	11327	11327		113RET			1130			
131	AREA	7-1/4	6	2-31/32	21/32	4-3/16												

Dimensions in inches  
Dimensiones En Pulgadas

A AND K RAILROAD MATERIALS, INC.  
RAIL SECTIONS

TYPE OF RAIL	WEIGHT	BASE	HEAD	WEB	FISHING	BAR HEIGHT	ILLINOIS STEEL	TENNESSEE COAL/IRON	CARNEGIE STEEL	CAMBRIA STEEL	BETHLEHEM STEEL	MARYLAND PS CO	LACKAWANNA STEEL	COLORADO FUEL/IRON	NCRM	ALGOMA STEEL	DOMINION IRON/STEEL
	7-5/16	6	2-21/32	21/32	4-3/16		13227	13227	13227		132RET			132D			

RAILS

RAIL	WEIGHT	BASE	HEAD	WEB	FISHING	BAR HEIGHT	ILLINOIS STEEL	TENNESSEE COAL/IRON	CARNEGIE STEEL	CAMBRIA STEEL	BETHLEHEM STEEL	MARYLAND PS CO	LACKAWANNA STEEL	COLORADO FUEL/IRON	NCRM	ALGOMA STEEL	DOMINION IRON/STEEL
RAIL																	
LOCO.CO																	
10CR	5-3/16	5-3/16	2-9/16	15/16	2-13/32												
10551																	
551																	
539																	
71CR																	
75CR																	
175-418																	

Gras Europeas (dimensiones en milímetros)

55	125	45	24	(44.75 Lbs/Yd = 22.2 Kg/m)
75	175	65	38	(87.69 Lbs/Yd = 43.5 Kg/m)
95	200	100	60	(151.60 Lbs/Yd = 75.2 Kg/m)
100	200	100	60	(155.23 LBS/Yd = 77.0 Kg/m)
154.4	152.4	101.6	34.93	(175.00 Lbs/Yd = 86.8 Kg/m)

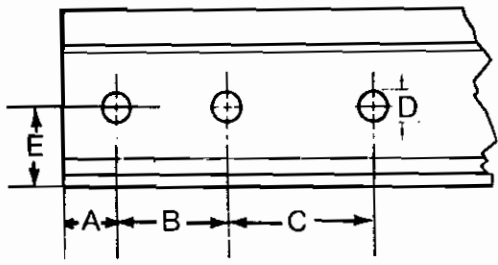
**RECOMMENDED RAIL GRADING CLASSIFICATIONS**

**CLASIFICACION RECOMENDADA PARA RIELES USADOS**

RAIL WEIGHT	MAXIMUM RAIL TOP	WEAR INCHES GAGE	GENERAL RAIL USE & RAIL CONDITION
<b>Class I</b>			
140	1/4	1/2	Main Line Use - Very minor engine burns and corrugation.
132-131	3/16	1/2	
122	5/32	7/16	
115	1/8	3/8	
112	1/8	3/4	
100	1/8	1/8	
90	1/8	1/8	
<b>Class II</b>			
140	3/8	3/4	Branch Lines - Small engine burns and corrugation.
132-131	5/16	3/4	
122	5/16	3/4	
115	5/16	3/4	
112	5/16	1/2	
100	3/16	1/4	
90	1/4	3/16	
<b>Class III</b>			
140	5/8	7/8	Light Branch Lines - Medium engine burns and corrugation, may be pitted and show some oxidation.
132-131	7/16	7/8	
122	1/2	7/8	
115	3/8	3/4	
112	3/8	3/4	
100	1/4	1/4	
90	5/16	5/16	
<b>Class IV</b>			
140	3/4	1	Yards. Any burns not mashed or fractured.
132-131	9/16	1	
122	11/16	1	
115	1/2	7/8	
112	1/2	7/8	
100	7/16	7/8	
90	3/8	3/8	

RIEL PESO EN LIBRAS	MAXIMO DESGASTE Dimensiones en pulgadas TOPE DEL HONGO LADO DEL ESCANTILLON		LUGAR DE UTILIZACION Y CONDICION DEL RIEL
<b>Calidad I</b>			
140	1/4	1/2	TRONCAL - Patinaduras y corrugacion menores.
132-131	3/16	1/2	
122	5/32	7/16	
115	1/8	3/8	
112	1/8	3/4	
100	1/8	1/8	
90	1/8	1/8	
<b>Calidad II</b>			
140	3/8	3/4	RAMALES Y VIAS SECUNDARIAS Patinaduras y corrugacion pequena
132-131	5/16	3/4	
122	5/16	3/4	
115	5/16	3/4	
112	5/16	1/2	
100	3/16	1/4	
90	1/4	3/16	
<b>Calidad III</b>			
140	5/8	7/8	RAMALES DE TRAFICO LIGERO Patinaduras y corrugacion medianas pueden estar picados y oxidados.
132-131	7/16	7/8	
122	1/2	7/8	
115	3/8	3/4	
112	3/8	3/4	
100	1/4	1/4	
90	5/16	5/16	
<b>Calidad IV</b>			
140	3/4	1	PATIOS. Con patinaduras sin fractura ni rajaduras
132-131	9/16	1	
122	11/16	1	
115	1/2	7/8	
112	1/2	7/8	
100	7/16	7/8	
90	3/8	3/8	

**Rail Drilling** The rail drilling is measured from the end of the rail to the center line of the first hole (A), and from the center line of the first hole to the center line of the second hole (B). If it is a 3 - hole drilling the same method is used.



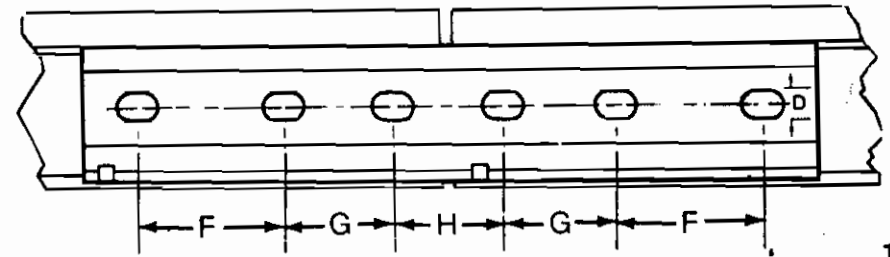
**Taladro** La separación de los agujeros o taladro de riel se mide desde el extremo de riel al centro del primer agujero (A), y desde el centro del primer agujero al centro del segundo agujero (B). Si el taladro es de 3 agujeros el mismo método se utiliza.

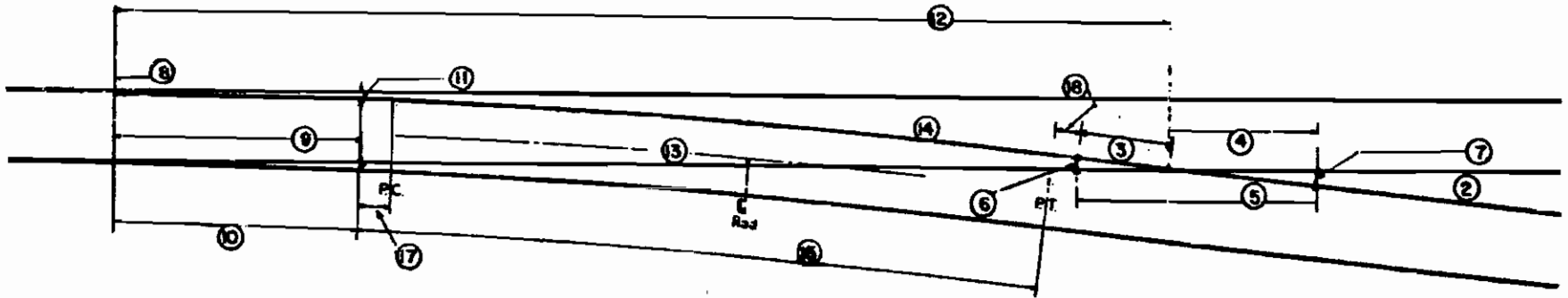
**Joint Bars** The Joint Bars must be punched to match the rail drilling accurately to insure proper rail alignment. The punch is measured from the center line of the first hole to the center line of the second hole (F) and from the center line of the second hole to the center line of the third hole (G).



Splice (Flat) Bar      Angle Bar  
 Planchuela Plana      Planchuela Angular

**Eclisas o Planchuelas** Las Eclisas o Planchuelas deben ser punzonadas para coincidir con el taladro del riel y asegurar su alineamiento correcto. El punzonamiento se mide desde el centro del primer agujero hasta el centro del segundo agujero (F) y desde el centro del segundo agujero hasta el centro del tercer agujero (G).





TURNOUT DATA (DATOS DE HERRAJES DE CAMBIO)

		NUMBER (NUMERO)	1	6	7	8	9	10	11
FROG (SAPO)	ANGLE (ANGULO)	2	9°-31'-38"	8°-10'-16"	7°-09'-10"	8°-21'-35"	5°-43'-29"	5°-12'-18"	
	TOE LENGTH (LONGITUD DE LA PUNTA)	3	3'-9" (114.3cm)	4'-8-1/2" (143.5cm)	5'-1" (154.9cm)	6'-4-1/2" (194.3cm)	6'-5" (195.6cm)	7'-0" (213.3cm)	
	HEEL LENGTH (LONGITUD DEL TALON)	4	6'-3" (190.5cm)	7'-3-1/2" (222.3cm)	7'-11" (241.3cm)	8'-7-1/2" (263.4cm)	10'-1" (307.3cm)	11'-8-1/2" (358.9cm)	
	TOTAL LENGTH (LONGITUD TOTAL)	5	10'-0" (304.8cm)	12'-0" (365.8cm)	13'-0" (396.2cm)	16'-0" (487.7cm)	16'-5" (502.9cm)	18'-8-1/2" (570.2cm)	
	TOE SPREAD (APERTURA EN LA PUNTA)	6	7" (17.8cm)	7-9/16" (19.2cm)	7-1/8" (18.1cm)	8" (20.3cm)	7-3/16" (18.3cm)	7-1/8" (18.1cm)	
	HEEL SPREAD (APERTURA EN EL TALON)	7	13" (33.0cm)	13" (33.0cm)	12-3/8" (31.4cm)	13-5/16" (33.8cm)	12-5/8" (32.1cm)	13-1/4" (33.7cm)	
	SWITCH (AGUJAS)	THICKNESS OF POINT (ESPESOR DE LA PUNTA)	8	1/8" (3.175mm)	1/8" (3.175mm)	1/8" (3.175mm)	1/8" (3.175mm)	1/8" (3.175mm)	1/8" (3.175mm)
LENGTH OF SWITCH POINT (LONGITUD DE LAS AGUJAS)		9	11'-0" (335.3cm)	16'-6" (502.9cm)	16'-6" (502.9cm)	16'-6" (502.9cm)	16'-6" (502.9cm)	22'-0" (670.6cm)	
SWITCH ANGLE (ANGULO DE AGUJAS)		10	2°-39'-34"	1°-46'-22"	1°-46'-22"	1°-46'-22"	1°-46'-22"	1°-19'-46"	
HEEL SPREAD (APERTURA EN EL TALON)		11	6-1/4" (15.9cm)	6-1/4" (15.9cm)	6-1/4" (15.9cm)	6-1/4" (15.9cm)	6-1/4" (15.9cm)	6-1/4" (15.9cm)	
ACTUAL LEAD (DISTANCIA DE P.A. A LA PUNTA DEL DIAMANTE DEL SAPO)	12	47'-6" (1448m)	62'-1" (1892m)	66'-0" (2072m)	72'-3-1/2" (2203m)	78'-0" (2400m)	91'-10-1/4" (2800m)		
STRAIGHT CLOSURE LENGTH (FIEL GUIA RECTO)	13	32'-0" (980m)	40'-10-1/2" (1240m)	46'-5" (1415m)	49'-5" (1500m)	55'-10" (1702m)	62'-10-1/4" (1910m)		
CURVED CLOSURE LENGTH (FIEL GUIA CURVO)	14	33'-0" (1000m)	41'-1-1/4" (1252m)	46'-7-1/2" (1421m)	49'-7-1/4" (1512m)	56'-0" (1707m)	63'-0" (1920m)		
CENTERLINE RADIUS (RADIO DE LINEA DE CENTRO)	15	258.57' (78.81m)	365.59' (111.43m)	487.28' (148.52m)	615.12' (187.49m)	779.29' (237.56m)	927.27' (282.63m)		
DEGREE OF CURVE (GRADO DE LA CURVA)	16	22°-17'-58"	15°-43'-16"	11°-46'-44"	9°-19'-30"	7°-21'-24"	6°-10'-58"		
TANGENT ADJACENT HEEL OF SWITCH (TANGENTE ADYACENTE TALON DE AGUJAS)	17	0 (0.00mm)	0.01' (195.07mm)	0.64' (195.07mm)	0 (0.00mm)	2.08' (633.96mm)	0 (0.00mm)		
TANGENT ADJACENT TOE OF FROG (TANGENTE ADYACENTE PUNTA DE SAPO)	18	1.75' (533.40mm)	0 (0.00mm)	0 (0.00mm)	0.17' (51.82mm)	0 (0.00mm)	0.15' (39.63mm)		

# PROPER USAGE OF THE VARIOUS TYPES OF FROGS

## SPRING-RAIL FROGS

- A - May be used in main track where traffic is predominantly on the main-track side of the frog.
- B - May be used in yard tracks, but only when rigid frogs are not available.

## RAIL-BOUND MANGANESE STEEL FROGS

Shall be used on heavy traffic lines where traffic is approximately equal on both sides of the frog.

## SOLID MANGANESE STEEL FROGS

May be used as alternate to rail-bound manganese steel frogs.

## SELF-GUARDED FROGS

- A - Shall be used in yard tracks.
- B - May be used in main tracks where speed does not exceed 30 mph.  
Note: Guard rails may be used with self-guarded frogs when conditions justify.

## BOLTED RIGID FROGS

May be used in yard and industry tracks where traffic is light on both sides of the frog, but only when self-guarded frogs are not available, or when desirable to utilize available secondhand frogs.

American Railway Engineering Association  
PROPER USAGE OF THE VARIOUS TYPES OF FROGS  
300-79

# USO APROPIADO DE LOS DIFERENTES TIPOS DE SAPOS

## SAPOS DE RESORTE (SPRING RAIL FROGS)

- A - PUEDEN SER UTILIZADOS EN LINEAS PRINCIPALES DONDE EL TRAFICO ES PREDOMINANTEMENTE SOBRE EL LADO DE LA VIA PRINCIPAL.
- B - PUEDEN SER UTILIZADOS EN PATIOS, PERO SOLAMENTE CUANDO NO SE DISPONGA DE SAPOS RIGIDOS.

## SAPOS CON INSERTOS DE ACERO MANGANESO (RAIL-BOUND MANGANESE STEEL FROGS)

DEBEN SER UTILIZADOS EN LINEAS DE TRAFICO PESADO DONDE EL TRAFICO ES APROXIMADAMENTE IGUAL EN AMBOS LADOS DEL SAPO.

## SAPOS SOLIDOS DE ACERO MANGANESO (SOLID MANGANESE STEEL FROGS)

PUEDEN SER UTILIZADOS COMO ALTERNATIVA DE LOS SAPOS CON INSERTOS DE ACERO MANGANESO.

## SAPOS AUTORRESGUARDADOS (SELF-GUARDED FROGS)

- A - PUEDEN SER UTILIZADOS EN PATIOS.
- B - PUEDEN SER UTILIZADOS EN LINEAS PRINCIPALES DONDE LA VELOCIDAD NO EXCEDA A 30 MPH (48.27 KM/HR).

NOTA: PUEDEN UTILIZARSE CONTRARRIELES CON SAPOS AUTORRESGUARDADOS CUANDO LAS CONDICIONES LO JUSTIFIQUEN.

## SAPOS DE RIEL ARMADO (BOLTED RIGID FROGS)

PUEDEN SER UTILIZADOS EN PATIOS Y VIAS INDUSTRIALES DONDE EL TRAFICO ES LIGERO EN AMBOS LADOS DEL SAPO, PERO SOLAMENTE CUANDO NO SE DISPONGA DE SAPOS AUTORRESGUARDADOS, O CUANDO SE DESEE UTILIZAR SAPOS USADOS.

**FRACTIONAL INCHES CONVERTED TO DECIMAL INCHES AND MILLIMETERS**

Fraciones de Pulgadas convertidas a decimales de Pulgadas

FRACTION OF INCH Fracción de Pulgada	DECIMAL OF INCH Decimal de Pulgada	DECIMAL MILLIMETERS Decimal de Milímetros	FRACTION OF INCH Fracción de Pulgada	DECIMAL OF INCH Decimal de Pulgada	DECIMAL MILLIMETERS Decimal de Milímetros
1/64	.015625	0.39688	33/64	.515625	13.09690
1/32	.03125	0.79375	17/32	.53125	13.49378
3/64	.046875	1.19063	35/64	.546875	13.89065
1/16	.0625	1.58750	9/16	.5625	14.28753
5/64	.078125	1.98438	37/64	.578125	14.68440
3/32	.09375	2.38125	19/32	.59375	15.08128
7/64	.109375	2.77813	39/64	.609375	15.47816
1/8	.125	3.17501	5/8	.625	15.87503
9/64	.140625	3.57188	41/64	.640625	16.27191
5/32	.15625	3.96876	21/32	.65625	16.66878
11/64	.171875	4.36563	43/64	.6875	17.46253
3/16	.1875	4.76251	11/16	.6875	17.46253
13/64	.203125	5.15939	45/64	.703125	17.85941
7/32	.21875	5.55626	23/32	.71875	18.25629
15/64	.234375	5.95314	47/64	.734375	18.65316
1/4	.25	6.35001	3/4	.75	19.05004
17/64	.265625	6.74689	49/64	.765625	19.44691
9/32	.28125	7.14376	25/32	.78125	19.84379
19/64	.296875	7.54064	51/64	.796875	20.24067
5/16	.3125	7.93752	13/16	.8125	20.63754
21/64	.328125	8.33439	53/64	.828125	21.03442
11/32	.34375	8.73127	27/32	.84375	21.43129
23/64	.359375	9.12814	55/64	.859375	21.82817
3/8	.375	9.52502	7/8	.875	22.22504
25/64	.390625	9.92189	57/64	.890625	22.62192
13/32	.40625	10.31877	29/32	.90625	23.01880
27/64	.421875	10.71565	59/64	.921875	23.41567
7/16	.4375	11.11252	15/16	.9375	23.81255
29/64	.453125	11.50940	61/64	.953125	24.20942
15/32	.46875	11.90627	31/32	.96875	24.60630
31/64	.484375	12.30315	63/64	.984375	25.00318
1/2	.5	12.7003	1	1.	25.40005

**METRIC AND ENGLISH CONVERSION TABLE**

Tabla de Conversión Sistemas Métrico é Inglés

**LINEAR MEASURE - Longitud**

1 KILOMETER	Kilómetro (Km)	= 0.6214	MILE	Milla
1 METER	Metro (m)	= 39.37	INCHES	Pulgadas
		= 3.2808	FEET	Piés
		= 1.0936	YARDS	Yardas
1 CENTIMETER	Centímetro (cm)	= 0.3937	INCH	Pulgada
1 MILLIMETER	Milímetro (mm)	= 0.03937	INCH	Pulgada
1 MILE	Milla (Mi)	= 1.609	KILOMETERS	Kilómetros
1 YARD	Yarda (Yd)	= 0.9144	METER	Metro
1 FOOT	Pié (')	(Ft) = 0.3048	METER	Metro
		= 304.8	MILLIMETERS	Milímetros
1 INCH	Pulgada (")	(In) = 2.54	CENTIMETERS	Centímetros
		= 25.4	MILLIMETERS	Milímetros

**WEIGHT - Peso**

1 METRIC TON (MT)	Tonelada Métrica (TM)	= 0.9842	GROSS TON	Tonelada Bruta
		= 2204.6	POUNDS	Libras
		= 1.1023	NET TONS	Toneladas C
1 KILOGRAM	(Kg) Kilogramo	(Kg) = 2.2046	POUNDS	Libras
1 NET TON	(NT) Tonelada Corta (TC)	= 2000	POUNDS	Libras
		= 0.9072	METRIC TON	Tonelada Métrica
		= 907.2	KILOGRAMS	Kilogramos
1 GROSS TON	(GT) Tonelada Bruta (TB)	= 2240	POUNDS	Libras
		= 1.016	METRIC TONS	Toneladas Métricas
		= 1016	KILOGRAMS	Kilogramos
1 POUND	(Lb) Libra	(Lb) = 0.4536	KILOGRAM	Kilogramo
		= 453.6	GRAMS	Gramos

**RAIL WEIGHT - Peso Rieles**

1 Kg/m = 2.0159 Lb/Yd  
1 Lb/Yd = 0.4961 Kg/m