

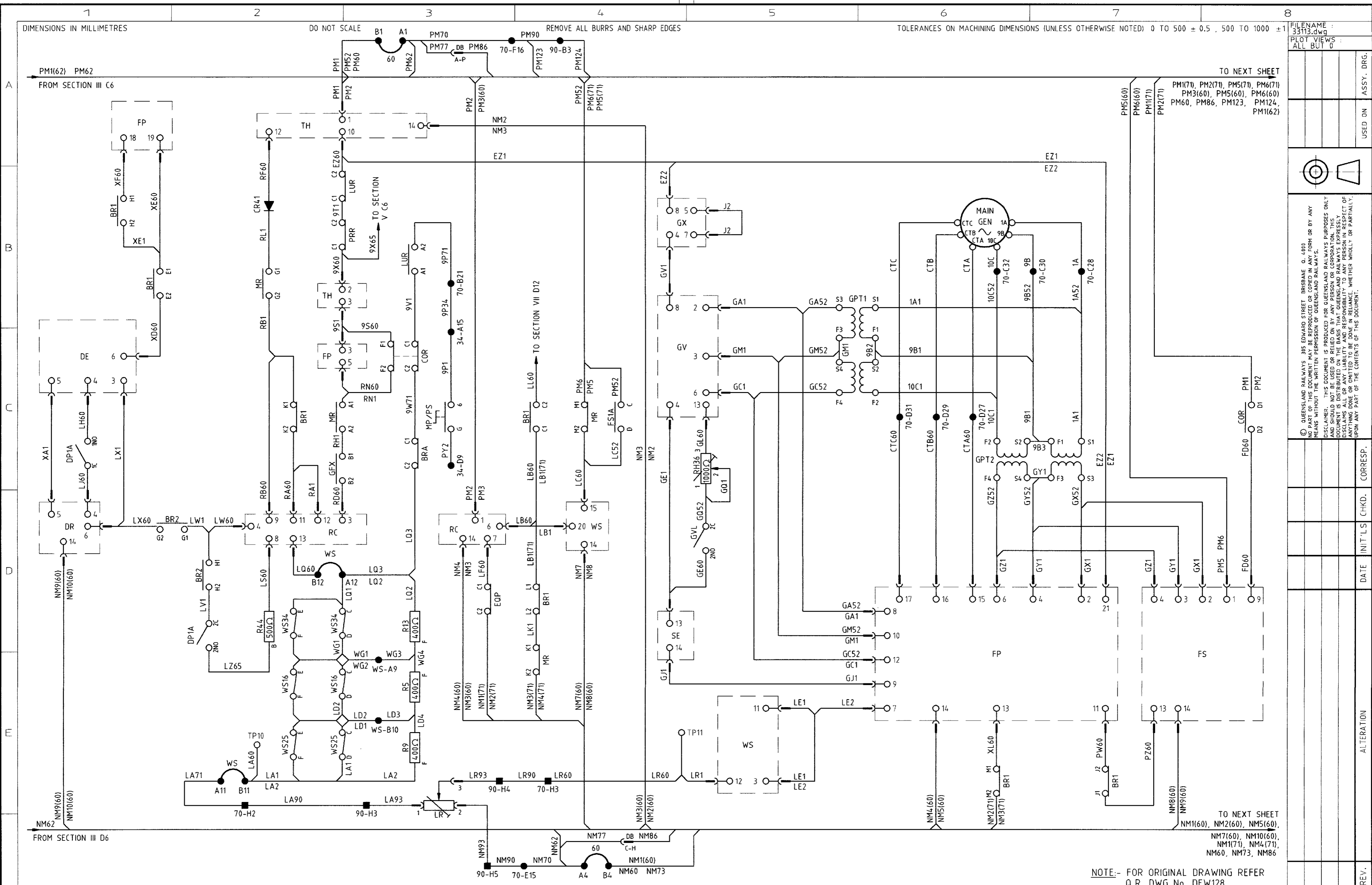
DIMENSIONS IN MILLIMETRES

DO NOT SCALE

REMOVE ALL BURRS AND SHARP EDGES

TOLERANCES ON MACHINING DIMENSIONS (UNLESS OTHERWISE NOTED) 0 TO 500 ± 0.5, 500 TO 1000 ± 1

FILENAME : 33113.dwg
PLOT VIEWS : ALL BUT 0



TO NEXT SHEET

PM1(71), PM2(71), PM5(71), PM6(71)
PM3(60), PM5(60), PM6(60)
PM60, PM86, PM123, PM124,
PM1(62)

TO NEXT SHEET

NM7(60), NM10(60),
NM11(71), NM4(71),
NM60, NM73, NM86

NOTE:- FOR ORIGINAL DRAWING REFER
Q.R. DWG No. DEW128

ITEM	DESCRIPTION	ORDERING SIZE	QTY PER ASSY	SPECIFICATION

MRE W. THOMAS
6/2/98

QUEENSLAND RAILWAYS
OFFICE OF THE MANAGER, ROLLINGSTOCK ENGINEERING

DIESEL LOCOS 2170-2180 (EXTENDED CAB)
PHYSICAL CIRCUIT DIAGRAM-MODULE CONTROL
GL22C-2 SECTION VII SHEET 1

SCALE	REF.
DRAWN A BOYD	
CHECKED 1998/11/2	
APPROVED JCR	
DATE 20.11.98	

REV.	DATE	INITIALS	CHKD.	CORRESP.	ALTERATION

USED ON ASSY. DRG.

© QUEENSLAND RAILWAYS 305 EDWARD STREET BRISBANE Q. 4000
NO PART OF THIS DOCUMENT MAY BE REPRODUCED OR COPIED IN ANY FORM OR BY ANY MEANS WITHOUT THE WRITTEN PERMISSION OF QUEENSLAND RAILWAYS.
DISCLAIMER: THIS DOCUMENT IS PRODUCED FOR QUEENSLAND RAILWAYS PURPOSES ONLY. IT IS NOT TO BE USED FOR ANY OTHER PURPOSES. QUEENSLAND RAILWAYS EXPRESSLY DISCLAIMS ALL OR ANY LIABILITY AND RESPONSIBILITY TO ANY PERSON IN RESPECT OF ANYTHING DONE OR OMITTED TO BE DONE IN RELIANCE, WHETHER WHOLLY OR PARTIALLY, UPON ANY PART OF THE CONTENTS OF THIS DOCUMENT.