

GARDNER-DENVER

VC-87D
June, 1957

PARTS LIST AND

OPERATING INSTRUCTIONS

MODELS WXE-9501 THRU WXE-9514

AIR COOLED

AIR COMPRESSOR

PARTS LIST

OPERATING INSTRUCTIONS

MODELS WXE-9501 THRU WXE-9514

COMPRESSOR

FOR GARDNER-DENVER 7 & 5-3/4 x 5, THREE CYLINDER
TWO-STAGE, AIR COOLED COMPRESSOR,
MODELS WXE-9501 THRU WXE-9514
OPERATING & MAINTENANCE INSTRUCTIONS

BEFORE STARTING

Fill the crankcase with lubricating oil to the high mark on the bayonet type oil gauge. The same grade of oil used in diesel engine can be used in compressor crankcase. As soon as the compressor is stopped, add sufficient oil to replace that which has been distributed to the various wearing surfaces.

When starting for the first time, run the compressor with the reservoir outlet valves wide open for about ten minutes so that oil will be distributed over all wearing surfaces. When sure that the unit is operating satisfactorily, partly close the reservoir valves and gradually bring up the pressure to the normal working pressure. Check the unloader pilot and see that it functions properly.

LUBRICATION

Oil level in the crankcase must be maintained between high and low level marks on the gauge. Add oil as required to maintain the correct level and change oil at the same time the diesel engine oil is changed. Each time oil is changed, be sure the crankcase is cleaned out thoroughly. Dirt, sludge, etc., if allowed to accumulate too long, will eventually result in damage to compressor. Gasoline or kerosene must NOT be used for cleaning crankcase; use regular flushing oil or wipe out with lint-free rags.

The quantity of oil required to fill an empty or dry crankcase to the high level mark on the oil level gauge rod is fourteen (14) quarts. The quantity of oil required to bring the level of oil from the low mark on the gauge to the high mark is four (4) quarts. Oil pressure should be approximately 20 pounds after compressor is warm. Oil pressure is adjusted by means of the adjusting screw.

INTERCOOLER

Drain condensate daily from the intercooler through the drain valve in the bottom of the shell. Operate the intercooler safety valve by hand daily to be sure it functions properly. Note intercooler pressure when compressor is put into use. If there is any abnormal rise in the cooler pressure, inspect the high pressure suction and discharge valves. If the cooler pressure drops considerably below normal, check over the low pressure suction and discharge valves. Blow out intercooler core sections frequently to keep air passages free for circulation.

CARE OF UNLOADING SYSTEM

If the unloading system does not function properly, DO NOT TAMPER WITH THE PILOT UNTIL YOU ARE SURE THE TROUBLE IS THERE. Check all air lines between the pilot and unloading valves to be sure there are no air leaks. See that the diaphragm is not damaged.

If after checking over the unloading system no trouble is found, the unloader pilot should be examined. In case of the Gardner-Denver Pilot, usually a thorough cleaning and reassembly is all that is necessary.

SUCTION VALVE UNLOADER (Safety Spring Type)

The safety spring type diaphragm unloader is designed to limit the total load which may be exerted on the suction bumper and stud regardless of the air pressure used. When air is applied above diaphragm, the entire unloader plunger assembly moves as a unit until the suction valve disc strikes the bumper. Additional movement of the upper plunger is permitted by the compression of the unloader plunger spring until the upper plunger bottoms in counter-bore of the suction valve cover plate.

This type of valve is designed so that it does not require any adjustment. The diaphragm should be checked and replaced if showing signs of damage.

VALVES

The valves are the vital parts of the compressor and should not be tampered with. An occasional inspection, every 2000 hours of operation, to see that there is no excessive accumulation of carbon nor any broken parts is all that is necessary.

One inlet and one discharge valve are located in the head over each cylinder bore. Each valve is located in a separate pocket and is individually accessible.

Remove the nuts or cap screws that hold the cover plate tight against the gasket but do not disturb the screw or screws that are threaded through the cover plate to seat the valve assembly.

After the valve is repaired, cleaned, etc., be sure the valve seat is in good condition and in place. If the gasket is damaged, install a new one.

Be ABSOLUTELY SURE that plate valves are not pinched between seat and bumper so that they cannot lift. TEST the valve action by inserting a screw driver through the air ports. Each plate valve must lift and close freely.

Replace valve assembly and cover plate and observe if cover plate is down to position. If valve assembly is not installed correctly, the locking screws will

hold the cover plate away from the gasket and cylinder face indicating some part of the whole assembly is not down on its seat. When sure parts are in correct position, replace nuts or screws and tighten moderately, applying equal pressure to all. Then loosen locking nuts on hold down screws, back off hold down screws one turn, finish seating cover plate nuts or screws, reset locking screws tight and reset hold down screw locknuts. This method will prevent incorrect assembly or damage and distortion of valve parts.

Never run the compressor with a valve that does not operate properly as a leaky valve will cause excessive temperatures and may cause an explosion in the air receiver or discharge line.

BEARING ADJUSTMENT

Main bearings are Timken Tapered Roller type and seldom require adjustment. They are correctly adjusted at the factory by means of thin shims under the bearing end plate at the intercooler end of the shaft. Should adjustment become necessary, both bearings are adjusted simultaneously by removing the required number of shims from beneath the end plate. This adjustment must be made with care so that bearings will not be too tight. See condemning limit page for method of making adjustment on main bearings.

The crankpin end of the connecting rod is equipped with a pair of precision steel backed babbitt lined inserts. No adjustment is required as they can be replaced when worn beyond the condemning limits. When installing replacement bearings, be sure that the projecting tip on each bearing fits in the mating recess in the rod or cap. When assembling cap to rod, be certain that the matching numbers are on the same side.

VALVE MAINTENANCE AND TROUBLE SHOOTING

From a maintenance standpoint the valves are the most critical items to be serviced. They should be inspected every three to six months depending on the service. During this inspection the following items should be checked:

1. Be sure seat and bumper are cleaned of any carbon and dirt and show no indication of damage.
2. Clean and examine valve discs to be sure there is no indication of warping, chipping, cracking or excessive wear at point of contact with seat, valve springs or unloading finger.
3. The valve springs, particularly on discharge valves, should be examined for rusting or loss of spring tension.
4. The diaphragm, if used, should be replaced, preferably with the new white diaphragm.

If valve trouble is suspected while in normal operation, you can use the rule of thumb statement that high intercooler pressure indicates a faulty HP valve and low intercooler pressure indicates a faulty LP valve. However, considerable time can be saved by using the following method for more specifically locating the defective valve:

1. If the intercooler pressure is abnormally high only when pumping, the high pressure suction valve should be inspected.
2. If the intercooler pressure climbs slowly when unloaded, the high pressure discharge valve or high pressure suction unloading mechanism should be checked.
3. If the intercooler pressure is abnormally low when pumping and drops to zero pressure in less than three minutes when unloaded, the LP discharge valves should be inspected.
4. If the intercooler pressure is abnormally low when pumping but drops only a few pounds after being unloaded three minutes, the LP suction valves should be inspected.

A further attempt to locate which of the LP discharge valves or LP suction valves are at fault will usually be indicated by a weak or erratic suction sound, abnormal blowback from air filter, or an excessively hot LP discharge valve cover plate.

From the above it is obvious that an accurate intercooler pressure gauge is important in diagnosing valve troubles. This method can frequently locate incipient valve trouble before being verified by low pressure on the condemning limit test.

The maintenance on other major wearing parts will ordinarily be required only when examination during a general overhaul indicates that they have either reached the optimum of satisfactory performance established by the railroad or the extreme limit of operation shown on the condemning limit charts published by the various locomotive builders.

Generally speaking the only parts that should be replaced at each major overhaul are as follows:

Crankpin Bearing Inserts
Valve Discs, Springs (Also Diaphragms if used)
Oil Seals
Pressure Gauges (Oil Pressure & Intercooler)
All Gaskets
Piston Rings

CLEARANCE & CONDEMNING LIMIT DATA FOR WXE COMPRESSOR

"Minimum Limits" recommended for correct installation of new parts.
 * "Condemning Limits" for determining useful life of old parts.

ITEM	CYL.	LIMIT	WXE
Piston Ring Gap	LP	Minimum Condemning Limit	.007 .028
	HP	Minimum Condemning Limit	.006 .024
Piston to Cylinder	LP	Minimum Condemning Limit	.0025 .015
	HP	Minimum Condemning Limit	.002 .012
Connecting Rod Bearing to Crankpin Diameter Clearance		Minimum Condemning Limit	.0012 .006
Connecting Rod Side Clearance (Total for 3 Rods)		Minimum Condemning Limit	.013 .065
Piston Pin to Bushing Clearance **		Minimum Condemning Limit	.0013 .005
Oil Pump Plunger to Oil Pump Body Clearance **		Minimum Condemning Limit	.001 .004
Timken Main Bearings End Clearance #		Minimum (Cold) Clearance Before Recom. Adjustment	.008 .013

* These condemning limits are for average installations and may need slight revisions for special applications.

**These parts are normally furnished in sets. If individual parts are replaced, ream- ing and hand fitting will be necessary.

To check end clearance use following procedure:

1. Fasten compressor to a vertical stand or frame so that crankshaft is vertical and the adjustable bearing plate No. 5 is on top.
2. Place small screw jack beneath lower end of crankshaft.
3. Attach indicator bracket to bearing plate cap screw so that indicator spindle rests on upper end of crankshaft.
4. Raise and lower crankshaft and note total movement on indicator.
5. If end clearance is more than "Clearance before recommending adjustment", re- move one thin shim (.005) and recheck.
6. In many cases, it is difficult to follow the procedure outlined in Items 1 to 5. For determination of approximate setting with compressor in horizontal position re- move all belts, coupling discs, etc. Remove crankcase handhole plate and mea- sure space between top Timken Bearing roll and outer cup. The total (or sum) of both bearing clearances must be at least .002 but not more than .004 inches.

GARDNER-DENVER CO., QUINCY, ILLINOIS

PASSING AND CONDEMNING LIMITS

7 & 5-3/4 x 5 "WXE" TWO STAGE COMPRESSOR

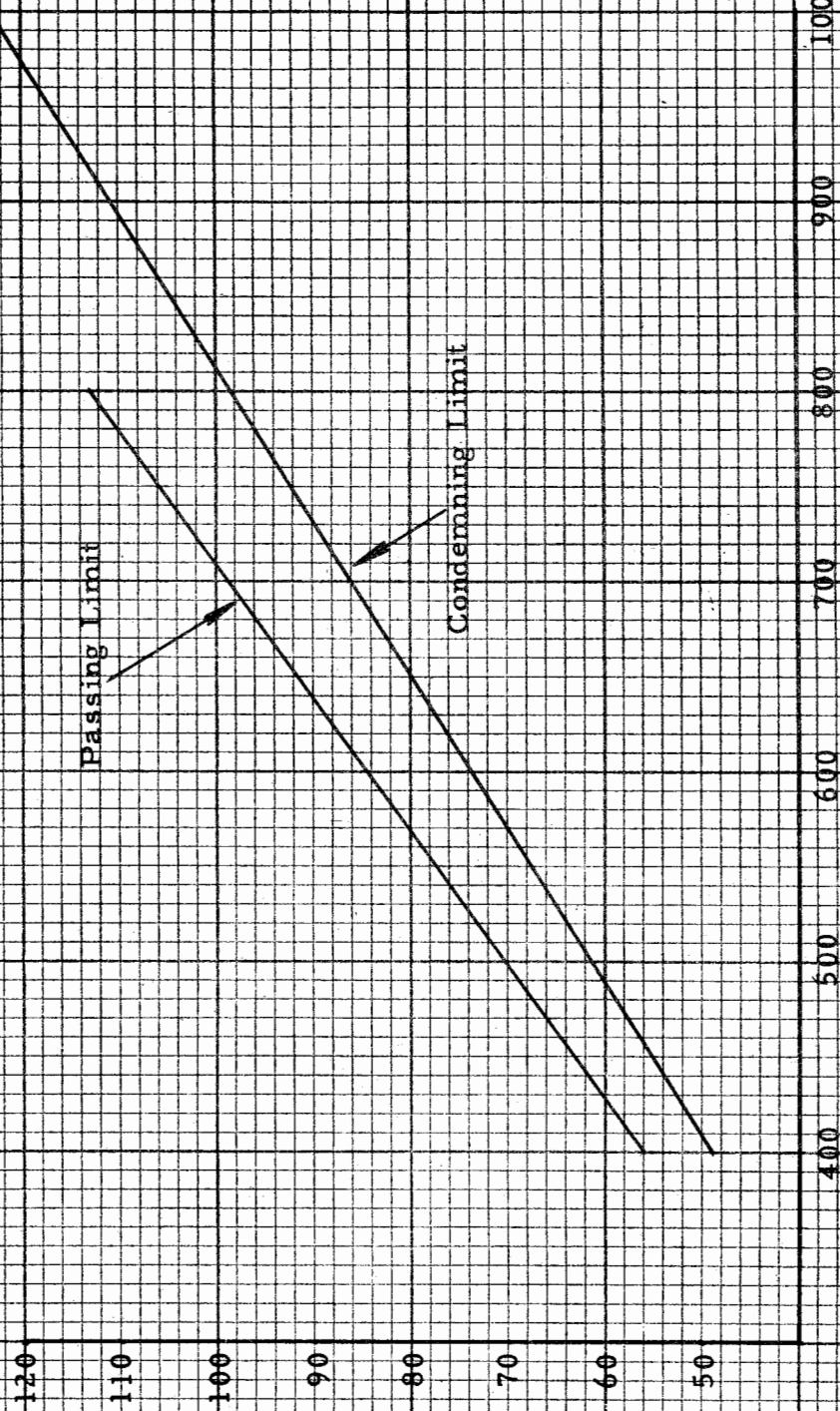
CURVES FOR SEA LEVEL ONLY

REDUCE CURVE READING 4% PER 1000 FT. ALTITUDE

USE ORIFICE 0.250 (1/4) INCH IN 1/16" PLATE

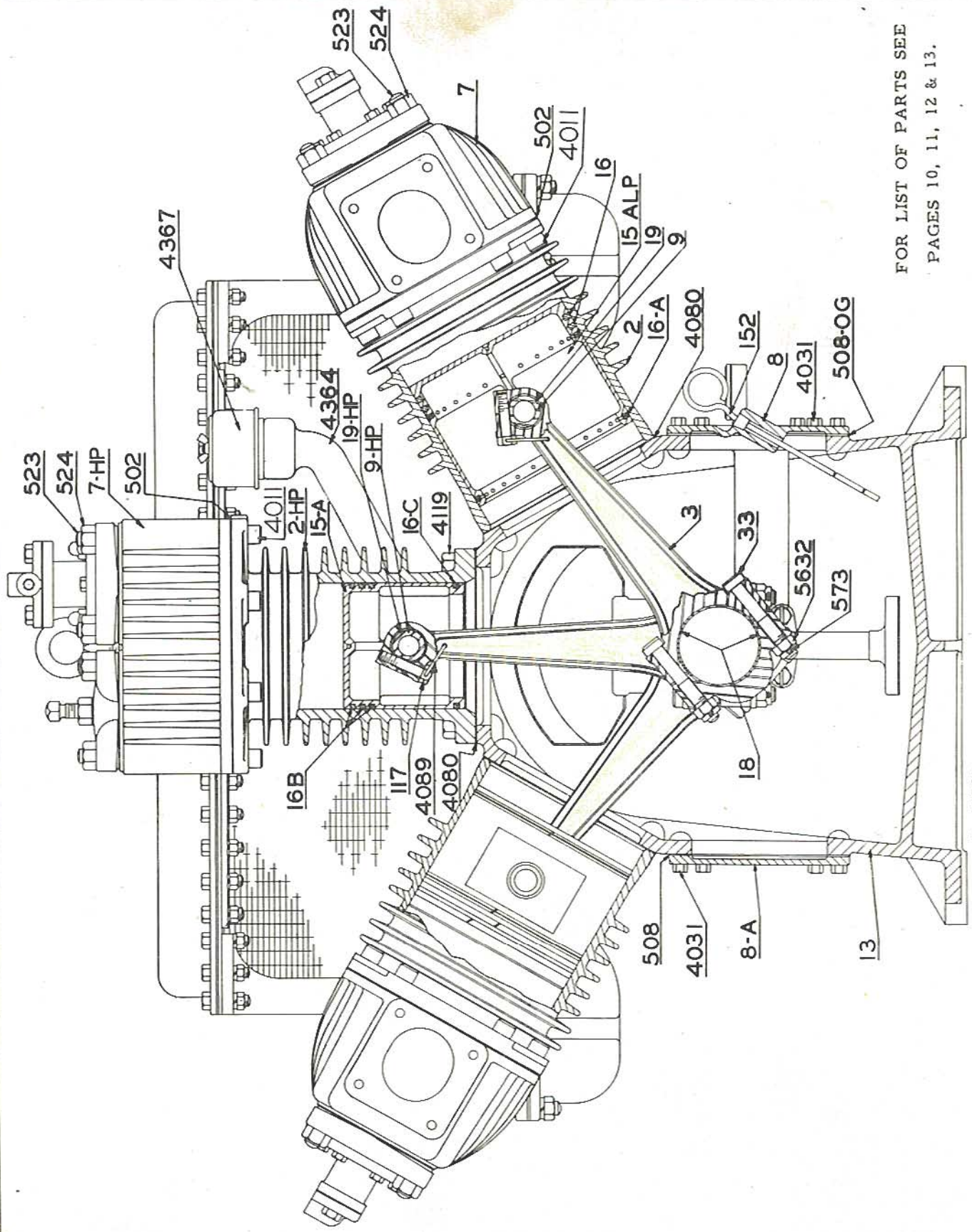
C-150-B

RESERVOIR PRESSURE - LBS. GAUGE



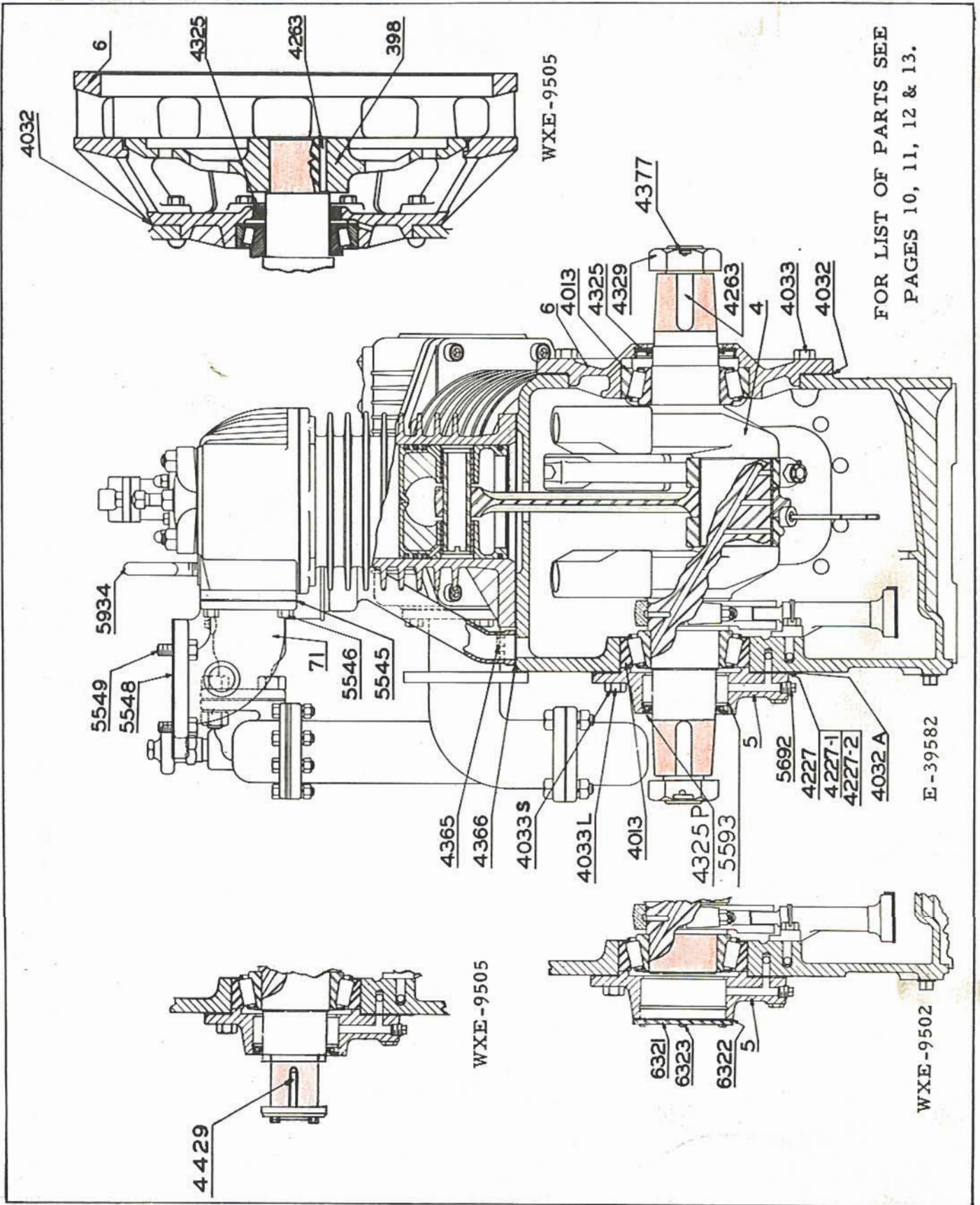
COMPRESSOR SPEED - R.P.M.

R.F.W.
6-22-38



FOR LIST OF PARTS SEE
 PAGES 10, 11, 12 & 13.

E-39582



FOR LIST OF PARTS SEE
 PAGES 10, 11, 12 & 13.

REF. NO.	NAME OF PART	NO. REQ'D. PER COMP.	MODELS WXE-9501 WXE-9504 WXE-9505	MODELS WXE-9502 WXE-9503	MODELS WXE-9506 WXE-9512	MODELS WXE-9507 WXE-9510	MODELS WXE-9508 WXE-9509 WXE-9511 WXE-9513	MODEL <u>WXE-9514</u>
	<u>LOW PRESSURE CYLINDER, PISTON, ROD & HEAD</u>		SYMBOL	SYMBOL	SYMBOL	SYMBOL	SYMBOL	SYMBOL
2	LP Cylinder	2	1-WCE-2	1-WCE-2	1-WCE-2	1-WCE-2	1-WCE-2	1-WCE-2
4080	LP Cylinder to Crankcase Gasket	2	25C557	25C557	25C557	25C557	25C557	25C557
4119	LP Cylinder to Crankcase Screw	8	75A57	75A57	75A57	75A57	75A57	75A57
15-ALP	LP Piston with Bushings *	2	2-WAG-576	2-WAG-576	3-WAG-576	3-WAG-576	3-WAG-576	3-WAG-576
19	LP Piston Pin Bushing	4	12F16	12F16	12AO7	12AO7	12AO7	12AO7
9	LP Piston Ring (Compression) *	See ()	65A39 (4)	65A39 (4)	65A235 (6)	65A235 (6)	65A235 (6)	65A235 (6)
16	LP Piston Ring (Oil Reg.) *	See ()	65B20 (4)	65B20 (4)	65R26 (2)	65R26 (2)	65R26 (2)	65R26 (2)
16-A	LP Piston Pin	2	62F7	62F7	62F7	62F7	62F7	62F7
3	Connecting Rod Assembly	2	WAG-508	WAG-508	WAG-508	WAG-508	WAG-508	WAG-508
33	Connecting Rod Bolt	4	WAG-254	WAG-254	WAG-254	WAG-254	WAG-254	WAG-254
5632	Connecting Rod Bolt Nut	4	50E7	50E7	50E7	50E7	50E7	50E7
573	Connecting Rod Bolt Cotter	4	62E7	62E7	62E7	62E7	62E7	62E7
18	Crankpin Bearing **	4	12M1	12M1	12M1	12M1	12M1	12M1
177	Piston Pin Clamp Screw	2	75E1	75E1	75E1	75E1	75E1	75E1
4089	Piston Pin Clamp Screw Wire	2	97A1	97A1	97A1	97A1	97A1	97A1
7	LP Cylinder Head with Studs	2	WCE-505	WCE-505	WCE-505	WCE-505	WCE-505	WCE-505
523	Valve Cover Plate Stud	16	79A101	79A101	79A101	79A101	79A101	79A101
524	Valve Cover Plate Stud Nut	16	50B7	50B7	50B7	50B7	50B7	50B7
502	LP Head to Cylinder Gasket	2	25C635	25C635	25C635	25C635	25C635	25C635
4011	LP Head to Cylinder Screw	16	75A29	75A29	75A29	75A29	75A29	75A29
	Suction Flange (LH) - Not Shown	See ()	WAE-69 (1)	WAE-69 (1)	WAE-69 (1)	WAE-69 (1)	WAE-69 (2)	14-WCE-69 (1)
	Flange to Head Gasket - Not Shown	2	25C484	25C484	25C484	25C484	25C484	25C484
	Flange to Head Screw - Not Shown	See ()	75A12 (8)	75A12 (6)	75A12 (6)	75A12 (6)	75A12 (8)	75A4 (6)
	Suction Filter - Not Shown	2	5A6	5A6	5A6	5A6	5A6	5B277
	Suction Elbow (RH) - Not Shown	1	None	1-ACX-69	1-ACX-69	1-ACX-69	None	15-WCE-69
	Suction Elbow Screw - Not Shown	2	None	75AA172	75AA172	75AA172	None	25C618
	Suction Air Filter Gasket - Not Shown	1	None	None	None	None	None	25C618
	Suction Air Filter Screw - Not Shown	4	None	None	None	None	None	75A130
	Suction Manifold Hose - Not Shown	1	None	None	None	None	None	29A125
	Suction Manifold Hose Clamp - Not Shown	2	None	None	None	None	None	29P7

* Also available in .010", .020" and .030" oversize.

** Also available in .030" undersize only, symbol 12M20.

REF. NO.	NAME OF PART	NO. REQ'D. PER COMP.	MODELS WXE-9501 WXE-9504 WXE-9505	MODELS WXE-9502 WXE-9503	MODELS WXE-9506 WXE-9512	MODELS WXE-9507 WXE-9510	MODELS WXE-9508 WXE-9509 WXE-9511 WXE-9513	MODELS WXE-9514
	HIGH PRESSURE CYLINDER PISTON, ROD & HEAD		SYMBOL	SYMBOL	SYMBOL	SYMBOL	SYMBOL	SYMBOL
2-HP 4080 4119	HP Cylinder HP Cylinder to Crankcase Gasket HP Cylinder to Crankcase Screw	1 1 4	WXE-2 25C557 75A57	WXE-2 25C557 75A57	WXE-2 25C557 75A57	WXE-2 25C557 75A57	WXE-2 25C557 75A57	WXE-2 25C557 75A57
15-A 19-HP 16-B 16-C 9-HP	HP Piston with Bushings * HP Piston Pin Bushing HP Piston Ring (Compression) * HP Piston Ring (Oil Reg.) * HP Piston Pin	1 2 3 1 1	WBH-576 12F23 65A25 65B23 62F18	WBH-576 12F23 65A25 65B23 62F18	1-WBH-576 12AO6 65A236 65R25 62F68	1-WBH-576 12AO6 65A236 65R25 62F68	1-WBH-576 12AO6 65A236 65R25 62F68	1-WBH-576 12AO6 65A236 65R25 62F68
3 33 5632 573 18 177 4089	Connecting Rod Assembly Connecting Rod Bolt Connecting Rod Bolt Nut Connecting Rod Bolt Cotter Crankpin Bearing ** Piston Pin Clamp Screw Piston Pin Clamp Screw Wire	1 2 2 2 2 1 1	WAG-508 WAG-254 50E7 62E7 12M1 75E1 97A1	WAG-508 WAG-254 50E7 62E7 12M1 75E1 97A1	WAG-508 WAG-254 50E7 62E7 12M1 75E1 97A1	WAG-508 WAG-254 50E7 62E7 12M1 75E1 97A1	WAG-508 WAG-254 50E7 62E7 12M1 75E1 97A1	WAG-508 WAG-254 50E7 62E7 12M1 75E1 97A1
7-HP 523 524 502 4011 5934 71 5545 5546	HP Cylinder Head with Studs Valve Cover Plate Stud Valve Cover Plate Stud Nut HP Cylinder Head to Cylinder Gasket HP Cylinder Head to Cylinder Screw Lifting Eyebolt HP Discharge Elbow Elbow to Head Gasket Elbow to Head Screw	1 8 8 1 8 1 1 1 4	WXE-505 79A101 50B7 25C636 75A29 15P31 WXE-71 25C542 75A12	WXE-505 79A101 50B7 25C636 75A29 15P31 WXE-71 25C542 75A12	WXE-505 79A101 50B7 25C636 75A29 15P31 WBF-71 25C542 75A12	WXE-505 79A101 50B7 25C636 75A29 15P31 WXE-71 25C542 75A12	WXE-505 79A101 50B7 25C636 75A29 15P31 WXE-71 25C542 75A12	WXE-505 79A101 50B7 25C636 75A29 15P31 2-WXE-71 25C542 75A12
	HP Discharge Flange - Not Shown Flange Gasket - Not Shown Flange Screw - Not Shown	1 1 4	None None None	None None None	None None None	None None None	None None None	None None None

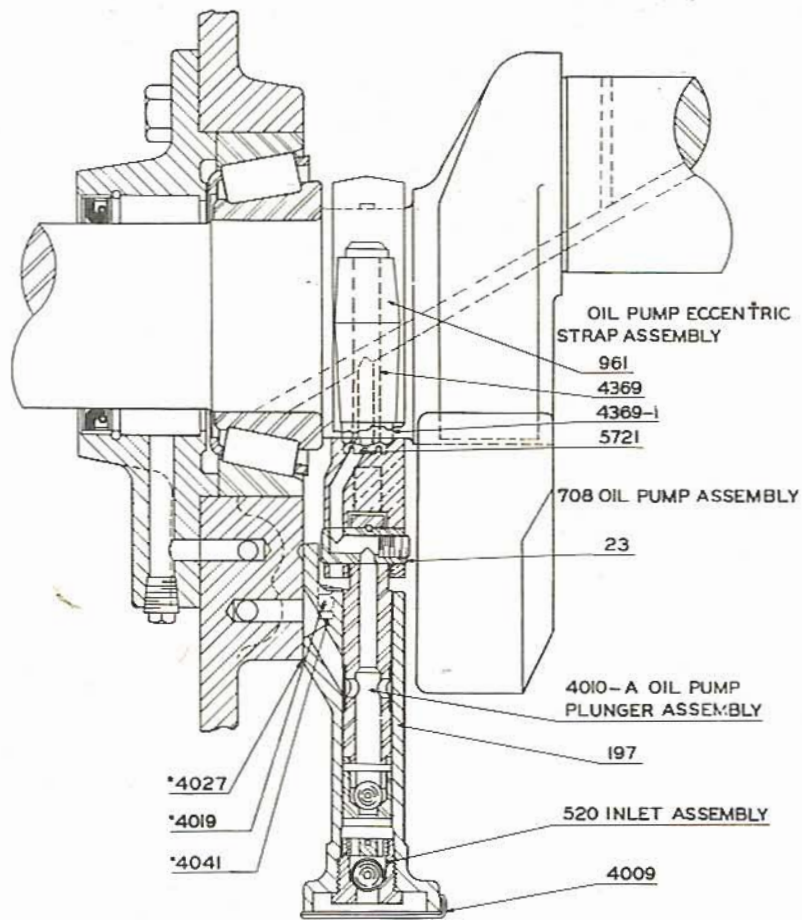
* Also available in .010", .020" and .030" oversize.

** Also available in .030" undersize only, symbol 12M20.

REF. NO.	NAME OF PART	NO. REQ'D. PER COMP.	MODELS WXE-9501 WXE-9504 WXE-9507 WXE-9508 WXE-9511	MODELS WXE-9502 WXE-9510 WXE-9513	MODEL WXE-9503	MODELS WXE-9505 WXE-9509	MODELS WXE-9506 WXE-9512	MODEL WXE-9514
	<u>POWER END</u>							
13	Crankcase	1	5-WAE-514	5-WAE-514	5-WAE-514	5-WAE-514	5-WAE-514	5-WAE-514
4037	Oil By-Pass Plate Stud	4	79A328	79A328	79A328	79A328	79A328	79A328
5088	Oil By-Pass Plate Stud Nut	4	50B3	50B3	50B3	50B3	50B3	50B3
4000	Oil Drain Plug	2	64A5	64A5	64A5	64A5	64A5	64A5
	Oil Return Tube - Not Shown	1	85A526	85A526	85A526	85A526	85A526	85A525
4	Crankshaft Assembly	1	10-WAE-474B	6-WAE-588	10-WAE-474B	13-WAE-474B	12-WAE-474B	14-WAE-474A
4329	Crankshaft Drive Nut	See ()	50V43 (2)	50T180 (1)	50V43 (2)	None	50V43 (2)	None
4263	Crankshaft Drive Key	See ()	35C102 (2)	35C102 (1)	35C102 (2)	35B204 (1)	None	None
4429	Crankshaft Nut Cotter - Not Shown	1	None	62E28	None	None	None	None
	Fan Sheave Drive Key	1	None	None	None	35D7	None	None
398	Coupling (Compressor Half)	1	None	None	None	ABO-282	None	None
4013	Main Bearing	2	12C21	12C21	12C21	12C21	12C21	12C21
6	Bearing End Plate (Drive End)	1	WAF-6	WAF-6	WAF-6	2-ABO-236	WAF-6	WAF-6
4325	Bearing End Plate Oil Seal	1	60G21	60G21	60G21	60G19	60G21	60G146
4032	Bearing End Plate Gasket	1	25C524	25C524	25C524	25C995	25C524	25C524
4033	Bearing End Plate Screw	8	75A29	75A29	75A29	75A17	75A29	75A29
	Bearing End Plate Plug - Not Shown	2	64AC1	64AC1	64AC1	64AC1	64AC1	64AC1
5	Bearing End Plate (Pump End)	1	2-WAE-5	4-WAE-5	2-WAE-5	2-WAF-5	2-WAE-5	2-WAE-5
4227	Bearing End Plate Shim (.005)	6	77A134	77A134	77A134	77A134	77A134	77A134
4227-1	Bearing End Plate Shim (.007)	6	77A135	77A135	77A135	77A135	77A135	77A135
4227-2	Bearing End Plate Shim (.020)	2	77A136	77A136	77A136	77A136	77A136	77A136
6321	Bearing End Plate Cover	1	None	1-WAE-238	None	None	None	None
6322	Bearing End Plate Cover Gasket	1	None	25C1673	None	None	None	None
6323	Bearing End Plate Cover Screw	6	None	75G31	None	None	None	None
5692	Bearing End Plate Plug	1	64AA5	64AA5	64AA5	64AA5	64AA5	64AA5
4033-S	Bearing End Plate Screw (Short)	See ()	75A18 (6)	75A18 (6)	75A18 (4)	75A18 (4)	75A18 (6)	75A18 (6)
4033-L	Bearing End Plate Screw (Long)	1	75A39	75A39	75A39	75A39	75A39	75A39
4032-A	Bearing End Plate Gasket	1	25C1633	25C1633	25C1633	25C1633	25C1633	25C1633
	Bearing End Plate Screw - Not Shown	2	None	None	None	75A29	None	None
961	Oil Pump Eccentric Strap Assembly	1	WXE-961	WXE-961	WXE-961	WXE-961	WXE-961	WXE-961
4369	Eccentric Strap Bolt	2	15K29	15K29	15K29	15K29	15K29	15K29
4369-1	Eccentric Strap Bolt Nut	2	50E5	50E5	50E5	50E5	50E5	50E5
5721	Eccentric Strap Bolt Cotter	2	62E5	62E5	62E5	62E5	62E5	62E5

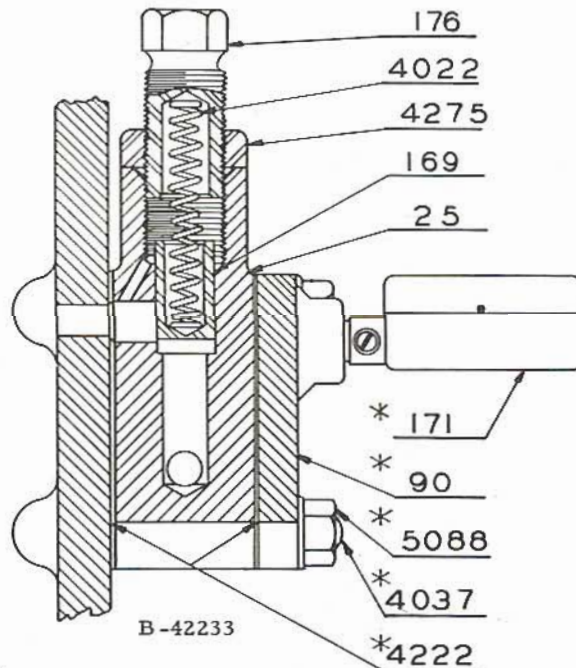
REF. NO.	NAME OF PART	NO. REQ'D. PER COMP.	MODELS WXE-9501 WXE-9504 WXE-9507 WXE-9508 WXE-9511	MODELS WXE-9502 WXE-9510 WXE-9513	MODEL WXE-9503	MODELS WXE-9505 WXE-9509	MODELS WXE-9506 WXE-9512	MODEL WXE-9514
	POWER END (Cont'd.)		SYMBOL	SYMBOL	SYMBOL	SYMBOL	SYMBOL	SYMBOL
708	Oil Pump Assembly	1	WXE-518	WXE-518	WXE-518	WXE-518	WXE-518	1-WXE-518
4010-A	Oil Pump Plunger Assembly	1	WXE-925	WXE-925	WXE-925	WXE-925	WXE-925	1-WXE-925
23	Strap to Plunger Pin	1	WXE-907	WXE-907	WXE-907	WXE-907	WXE-907	WXE-907
197	Oil Pump Body	1	WAG-197	WAG-197	WAG-197	WAG-197	WAG-197	WCE-197
520	Oil Pump Inlet Assembly	1	1-AAB-520	1-AAB-520	1-AAB-520	1-AAB-520	1-AAB-520	1-AAB-520
4009	Oil Pump Screen	1	AAB-19	AAB-19	AAB-19	AAB-19	AAB-19	AAB-19
4027	Oil Pump to Crankcase Gasket	1	25C532	25C532	25C532	25C532	25C532	25C532
4041	Oil Pump to Crankcase Screw	2	75B4	75B4	75B4	75B4	75B4	75B4
4019	Oil Pump to Crankcase Screw Wire	1	97A1	97A1	97A1	97A1	97A1	97A1
550	Oil Relief Valve Plate Assembly	1	1-WAG-550	1-WAG-550	1-WAG-550	1-WAG-550	1-WAG-550	4-WAG-25B
25	Oil Relief Valve Plate	1	1-WAG-25	1-WAG-25	1-WAG-25	1-WAG-25	1-WAG-25	4-WAG-25
169	Oil Relief Valve Plug - Not Shown	2	64AA5	64AA5	64AA5	64AA5	64AA5	64AA5
4022	Pressure Relief Valve	1	AAH-169	AAH-169	AAH-169	AAH-169	AAH-169	1-WAG-169
176	Pressure Relief Valve Spring	1	78A97	78A97	78A97	78A97	78A97	78A97
4275	Pressure Adjusting Screw	1	AAH-176	AAH-176	AAH-176	AAH-176	AAH-176	ABO-176
	Pressure Adjusting Screw Nut	1	50G9	50G9	50G9	50G9	50G9	None
	Relief Valve Adj. Screw Nut Gasket - Not Shown	1	97A14	97A14	97A14	97A14	97A14	25F40
4222	Oil By-Pass Plate Gasket	2	25C1176	25C1176	25C1176	25C1176	25C1176	25C1176
171	Oil Pressure Gauge	1	*	*	*	*	*	*
90	Oil By-Pass Plate	1	WXE-90	WXE-90	WXE-90	WXE-90	WXE-90	WXE-90
8-A	Handhole Plate (Plain)	1	WAE-9	WAE-9	WAE-9	WAE-9	WAE-9	WAE-9
508	Handhole Plate Gasket (Plain)	1	25C563	25C563	25C563	25C563	25C563	25C563
8	Handhole Plate (Oil Gauge)	1	WAE-8	WAE-8	WAE-8	WAE-8	WAE-8	WAE-8
508-OG	Handhole Plate Gasket (Oil Gauge)	1	25C1839	25C1839	25C1839	25C1839	25C1839	25C1839
4031	Handhole Plate Screw	18	75A130	75A130	75A130	75A130	75A130	75A130
152	Oil Level Gauge Rod	1	1-WAD-557	1-WAD-557	1-WAD-557	1-WAD-557	1-WAD-557	WCE-153A
4364	Oil Filler Body	1	1-WAE-32	1-WAE-32	1-WAE-32	1-WAE-32	1-WAE-32	WBO-32A
	Oil Filler Cap - Not Shown	1	None	None	None	None	None	5D10
4366	Oil Filler Body Gasket	1	25C546	25C546	25C546	25C546	25C546	25C546
4365	Oil Filler Body Screw	See ()	75AA1 (7)	75AA1 (2)	75AA1 (7)	75AA1 (2)	75AA1 (7)	75AA1 (2)
4367	Crankcase Breather	1	5C8	5C8	5C8	5C8	5C8	None
4325-P	End Plate Oil Seal (Pump End)	1	60G32	None	60G32	60G35	60G32	60G32
5593	Oil Seal Retainer	1	1-AUX-203	None	1-AUX-203	3-AUX-203	1-AUX-203	1-AUX-203
	Male Tube Connector - Not Shown	2	None	None	None	None	None	86E17
	Crankcase Breather Vent Tube - Not Shown	1	None	None	None	None	None	85A643

* Gauges available graduated in P. S. I. 27G1, or Kilograms 27G2.



C-37745 *NOT PART OF PUMP OR ECCENTRIC ASSEMBLY

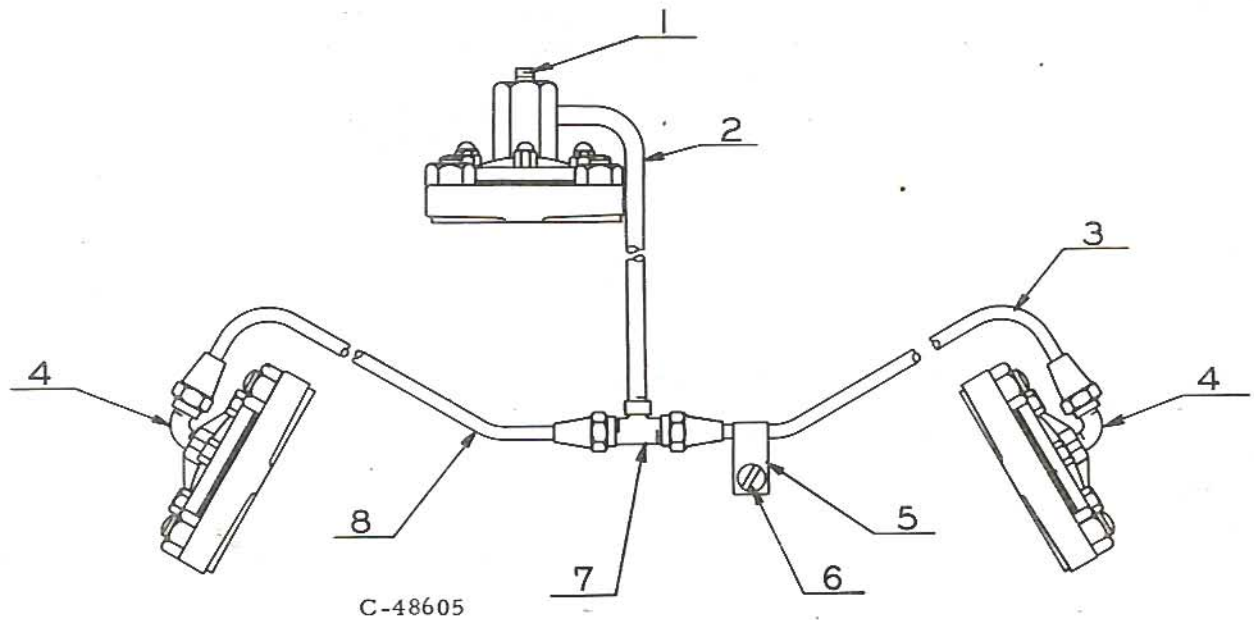
550 OIL RELIEF VALVE PLATE ASSEMBLY



B-42233

FOR LIST OF PARTS
SEE PAGES 12 & 13.

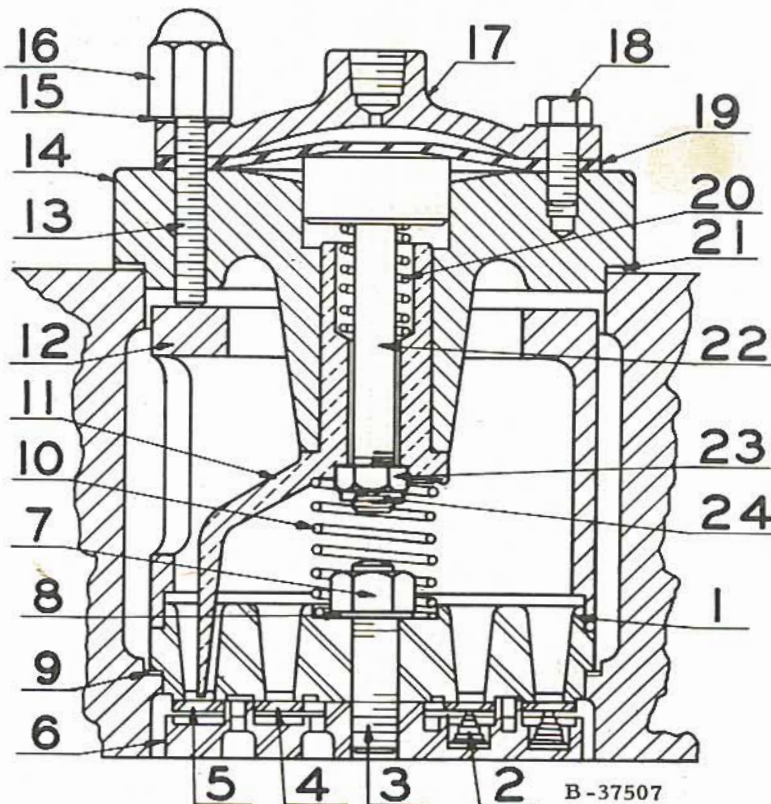
*NOT INCLUDED IN ASSEMBLY



REF. NO.	NAME OF PART	NO. REQ'D. PER COMP.	MODELS WXE-9501 THRU WXE-9504	MODELS WXE-9506 THRU WXE-9513
	<u>UNLOADER PIPING</u>		SYMBOL	SYMBOL
1	Diaphragm Cap Plug	1	64AC2	64AC2
2	HP Head to Tee Tube or Pipe	1	63S167	85A595
3	Unloader Line Tube with Nuts (RH) *	1	87A84	85A596
4	Unloader Line Tube Elbow	2	86A8	86E60
5	Unloader Line Tube Clamp	1	98A1	98A1
6	Unloader Line Tube Clamp Screw	1	75G2	75G2
7	Unloader Line Tube Tee	1	86A24	86E155
8	Unloader Line Tube (LH) *	1	87A318	85A597
	Tube Connector - Not Shown	1	None	86E4
	Unloader Line Nipple - Not Shown	1	63Z35	None
	Unloader Line Union Elbow - Not Shown	1	64Q1	None

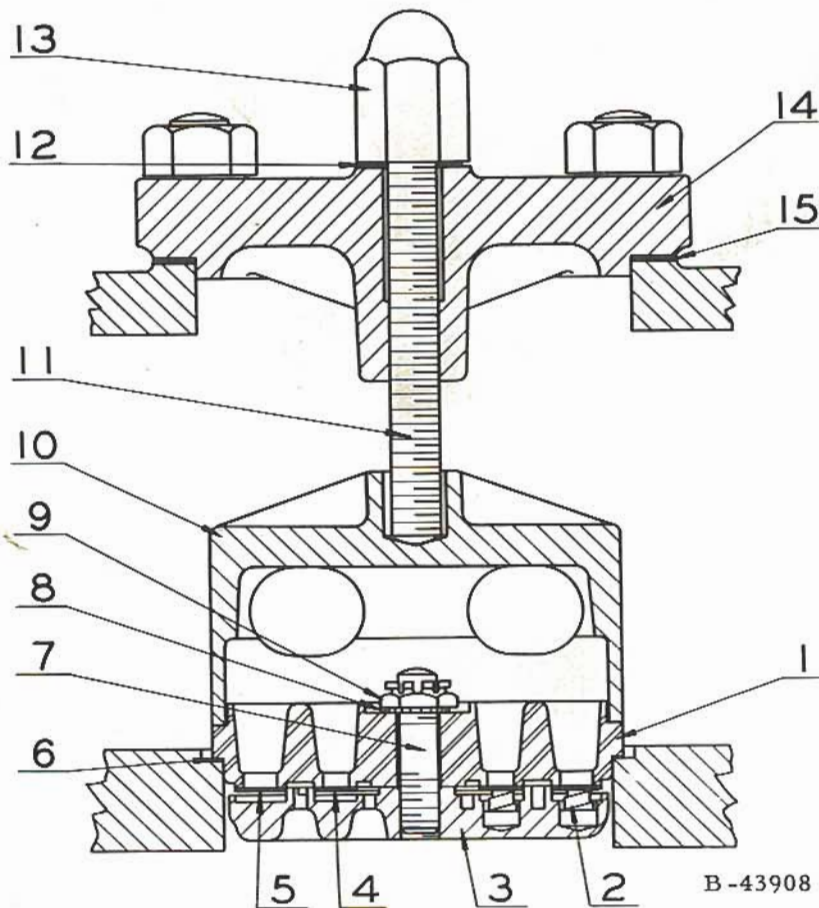
* To determine the Right Hand and Left Hand side of the compressor, stand at the end of the crankshaft opposite the intercooler and face the compressor

NAME OF PART	NO. REQ'D. PER COMP.	MODEL WXE-9514
<u>UNLOADER PIPING</u>		SYMBOL
HP Cylinder to Tee Tube	1	85A684
LP Cylinder to Tee Tube	2	85A420
Tube Tee	1	86E155
Tube LP Connector	2	86E4
Tube Clamp	1	98A5
Tube Clamp Screw	1	75G2
Tube HP Connector	1	86E194



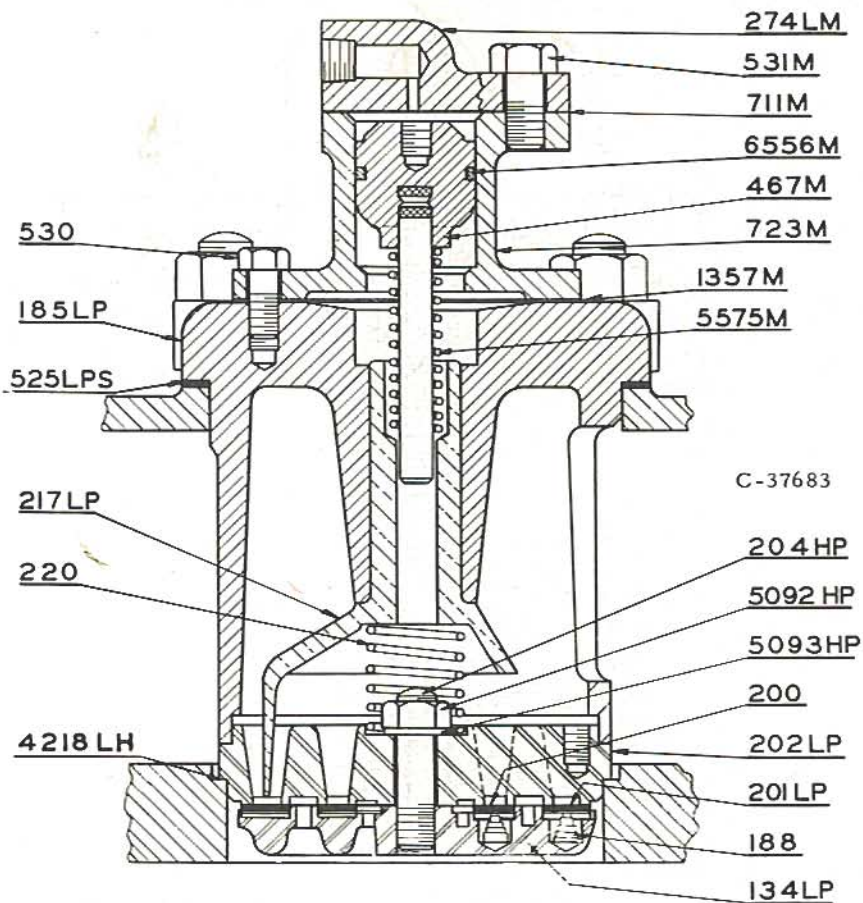
REF. NO.	NAME OF PART	NO. REQ'D. PER COMP.	MODELS WXE-9501 thru 9504, 9506, 9507, 9508, 9510, 9511, 9512, 9513
	<u>LOW PRESSURE SUCTION UNLOADING VALVE</u>		SYMBOL
	LPS Valve Assembly Complete, All the following parts	2	5-WAG-526
	LPS Valve Assembly, Incl. Parts #1, 2, 4, 5, 6 & 9	2	1-WAG-506
1	LPS Valve Seat	2	5-XJ-202
2	LPS Valve Spring	12	78F4
3	LPS Valve Bumper Stud *	2	79C25
4	LPS Valve (Inner)	2	90E3
5	LPS Valve (Outer)	2	90E10
6	LPS Valve Bumper with Stud, Washer & Nut *	2	HAE-117X
7	LPS Valve Bumper Stud Nut *	2	50AH5
8	LPS Valve Bumper Stud Washer *	2	95H5
9	LPS Valve Seat Gasket	2	25L7
10	LPS Lower Unloader Spring	2	78A124
11	LPS Lower Unloader Plunger	2	2-WAG-217
12	LPS Valve Clamp	2	2-HAG-194
13	LPS Valve Clamp Screw	6	76GG4
14	LPS Valve Cover Plate	2	2-WAG-185
15	LPS Valve Clamp Screw Gasket	6	25F15
16	LPS Valve Clamp Screw Nut	6	50Q18
17	LPS Valve Diaphragm Cap	2	1-WAU-274
18	LPS Valve Diaphragm Cap Screw	6	75A130
19	LPS Valve Diaphragm	2	4-AAB-215
20	LPS Upper Unloader Plunger Spring	2	78A126
21	LPS Cover Plate Gasket	2	25R15
22	LPS Upper Unloader Plunger	2	1-WAG-467
23	LPS Upper Unloader Plunger Nut	2	50E4
24	LPS Upper Unloader Plunger Cotter	2	62E3

* Stud, Washer and Nut furnished with Bumper but they may be purchased separately.



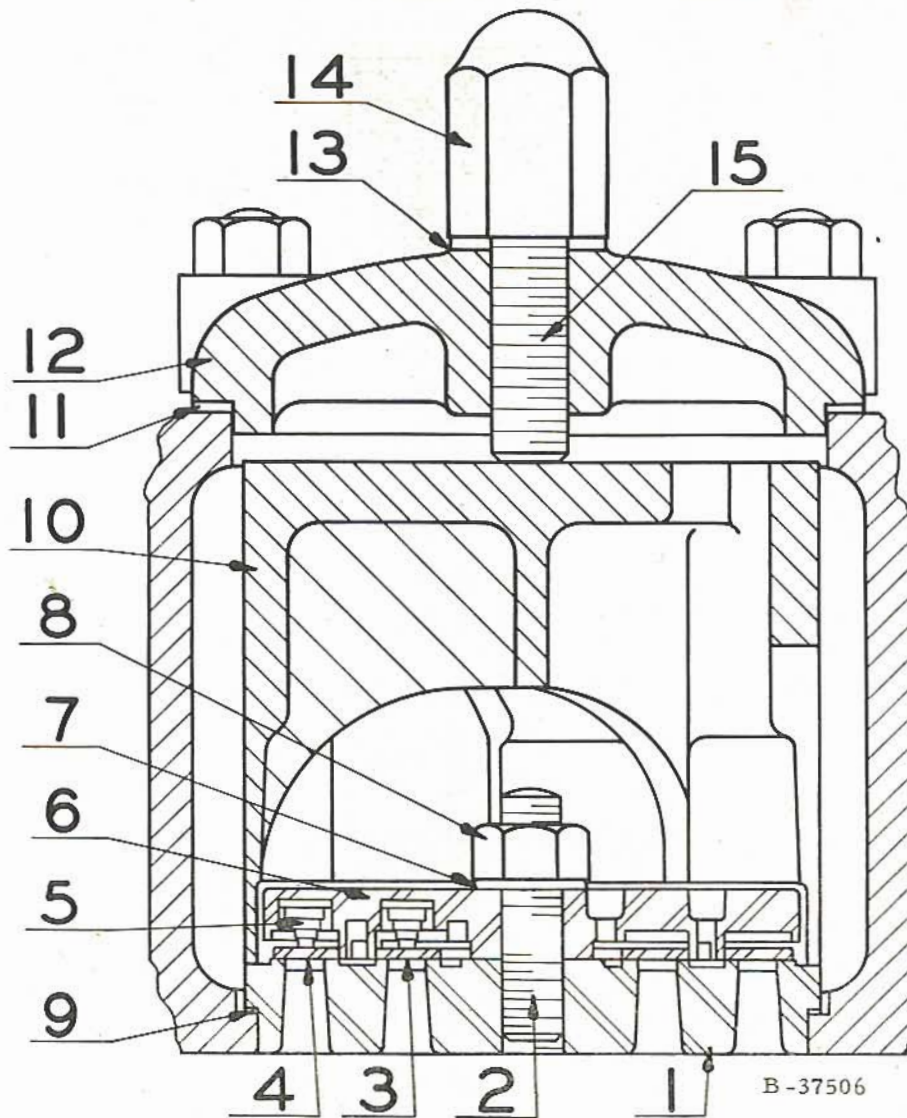
REF. NO.	NAME OF PART	NO. REQ'D. PER COMP.	MODELS WXE-9505 WXE-9509
	<u>LOW PRESSURE SUCTION VALVE (PLAIN)</u>		SYMBOL
	LPS Valve Assembly Complete, All the following parts	2	HAE-117P
	LP Suction Valve Assembly, Incl. Parts #1 thru 6	2	1-WAG-506
1	Seat	2	5-XJ-202
2	Spring	12	78C6
3	Bumper with Stud, Washer & Nut *	2	HAE-117X
4	Valve (Inner)	2	90E3
5	Valve (Outer)	2	90E10
6	Seat Gasket	2	25L7
7	Bumper Stud *	2	79C25
8	Bumper Washer *	2	95H5
9	Bumper Nut *	2	50AH5
10	Clamp	2	2-HAB-452
11	Clamp Screw	2	76GG13
12	Clamp Screw Gasket	2	25F13
13	Clamp Screw Nut	2	50Q17
14	Valve Cover	2	1-WAG-11
15	Valve Cover Gasket	2	25R15

* Stud, Washer and Nut furnished with Bumper but they may be purchased separately.



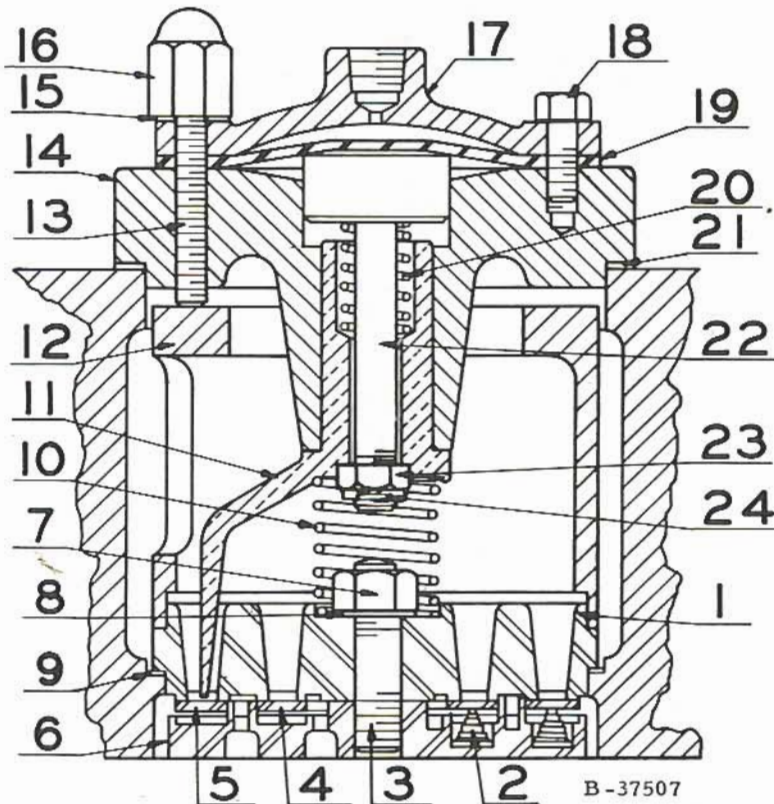
REF. NO.	NAME OF PART	NO. REQ'D. PER COMP.	MODEL <u>WXE-9514</u>
	<u>LOW PRESSURE SUCTION UNLOADING VALVE</u>		SYMBOL
	LP Suction Unloading Valve Assembly	2	1-WCE-526
	LP Suction Valve Assembly	2	1-WAG-506
202-LP	LPS Valve Seat	2	5-XJ-202
200	LPS Valve (Inner)	2	90E3
201-LP	LPS Valve (Outer)	2	90E10
188	LPS Valve Spring	12	78F4
4218-LP	LPS Valve Seat Gasket	2	25L7
134-LP	LPS Valve Bumper with Stud, Washer & Nut *	2	HAE-117X
204-HP	Valve Bumper Stud *	2	79C25
5093-HP	Valve Bumper Washer *	2	95H5
5092-HP	Valve Bumper Nut *	2	50AH5
	Cover and Upper Plunger Assembly	2	WCE-968
467-M	Upper Plunger	2	2-WXE-467
6556-M	Upper Plunger Ring	2	65A56
723-M	Upper Plunger Cover	2	WCE-723
274-LM	Valve Cover Cap	2	WLD-274
711-M	Valve Cover Cap Gasket	2	25C531
531-M	Valve Cover Cap Screw	4	75A4
5575-M	Upper Plunger Spring	2	78A160
217-LP	Lower Plunger	2	1-WAG-217
220	Lower Plunger Spring	2	78A124
185-LP	Valve Cover Plate	2	1-WAG-185
525-LPS	Valve Cover Plate Gasket	2	25B19
1357-M	Upper Cover Plate Gasket	2	25C1357
530	Upper Cover Plate Screw	12	75A130

* Stud, Washer and Nut furnished with Bumper but they may be ordered separately.



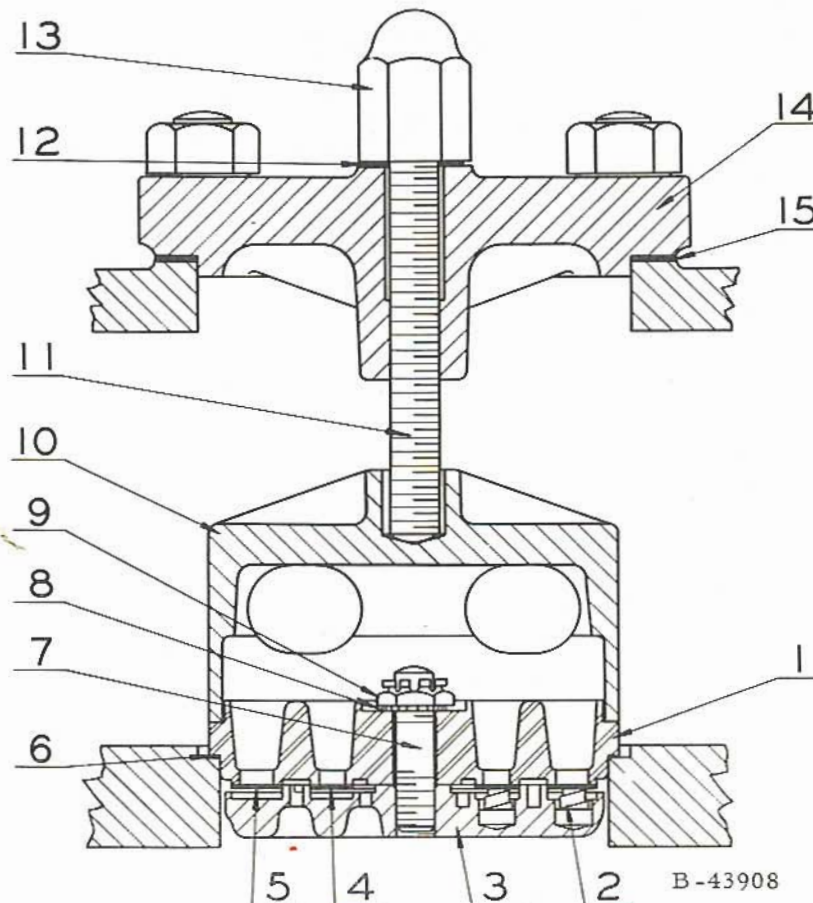
REF. NO.	NAME OF PART	NO. REQ'D. PER COMP.	MODELS WXE-9501 THRU <u>WXE-9514</u>
	<u>LOW PRESSURE DISCHARGE VALVE</u>		SYMBOL
	LPD Valve Assembly, Incl. Parts #1, 3, 4, 5, 6 & 9	2	WAG-507
1	LPD Valve Seat with Stud, Washer & Nut *	2	3-XJ-203X
2	LPD Valve Seat Stud *	2	79C25
3	LPD Valve (Inner)	2	90E3
4	LPD Valve (Outer)	2	90E10
5	LPD Valve Spring	12	78C6
6	LPD Valve Bumper	2	HAE-128
7	LPD Valve Seat Stud Washer *	2	95H5
8	LPD Valve Seat Stud Nut *	2	50C5
9	LPD Valve Seat Gasket	2	25L7
10	LPD Valve Clamp	2	WAG-194
11	LPD Valve Cover Plate Gasket	2	25R15
12	LPD Valve Cover Plate	2	1-WAG-11
13	LPD Valve Clamp Screw Gasket	2	25F13
14	LPD Valve Clamp Screw Nut	2	50Q17
15	LPD Valve Clamp Screw	2	76GG7

* Stud, Washer and Nut furnished with Seat but they may be purchased separately.



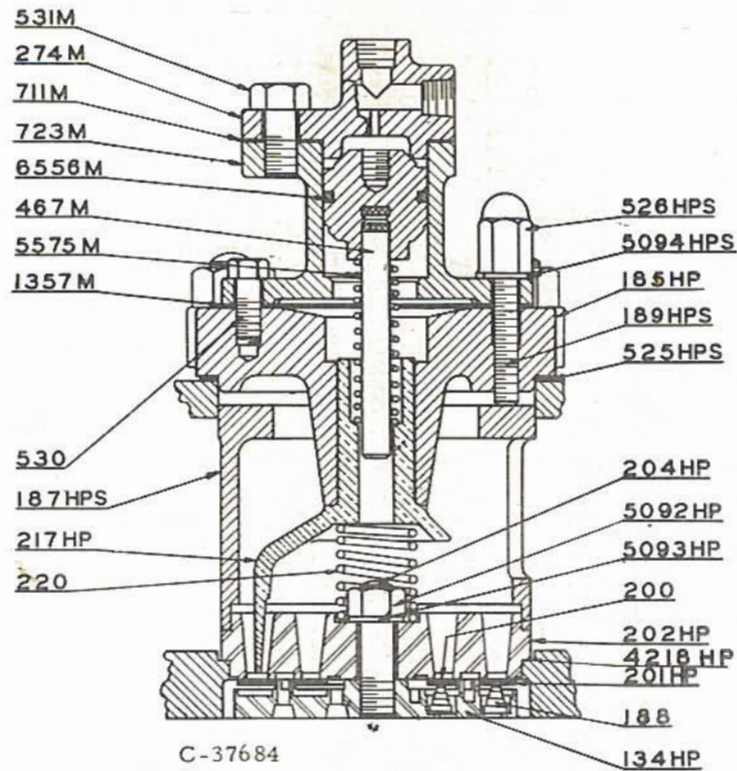
REF. NO.	NAME OF PART	NO. REQ'D. PER COMP.	MODELS WXE-9501 thru 9504, 9506, 9507, 9508, 9510, 9511, 9512, 9513
	<u>HIGH PRESSURE SUCTION UNLOADING VALVE</u>		SYMBOL
	HPS Valve Assembly Complete, All the following parts	1	5-WBG-568
	HPS Valve Assembly, Incl. Parts #1, 2, 4, 5, 6 & 9	1	1-WBG-563
1	HPS Valve Seat	1	7-YC-14
2	HPS Valve Spring	6	78F4
3	HPS Valve Bumper Stud *	1	79C25
4	HPS Valve (Inner)	1	90E3
5	HPS Valve (Outer)	1	90E6
6	HPS Valve Bumper with Stud, Washer & Nut *	1	WAF-164X
7	HPS Valve Bumper Stud Nut *	1	50AH5
8	HPS Valve Bumper Stud Washer *	1	95H5
9	HPS Valve Seat Gasket	1	25L6
10	HPS Lower Unloader Spring	1	78A124
11	HPS Lower Unloader Plunger	1	1-WBG-217
12	HPS Valve Clamp	1	1-WBG-194
13	HPS Valve Clamp Screw	3	76GG4
14	HPS Valve Cover Plate	1	1-WBG-185
15	HPS Valve Clamp Screw Gasket	3	25F15
16	HPS Valve Clamp Screw Nut	3	50Q18
17	HPS Valve Diaphragm Cap	1	WXE-274
18	HPS Valve Diaphragm Cap Screw	6	75A130
19	HPS Valve Diaphragm	1	4-AAB-215
20	HPS Upper Unloader Plunger Spring	1	78A126
21	HPS Valve Cover Plate Gasket	1	25R27
22	HPS Upper Unloader Plunger	1	1-WBG-467
23	HPS Upper Unloader Plunger Nut	1	50E4
24	HPS Upper Unloader Plunger Cotter	1	62E3

* Stud, Washer and Nut furnished with Bumper but they may be purchased separately.



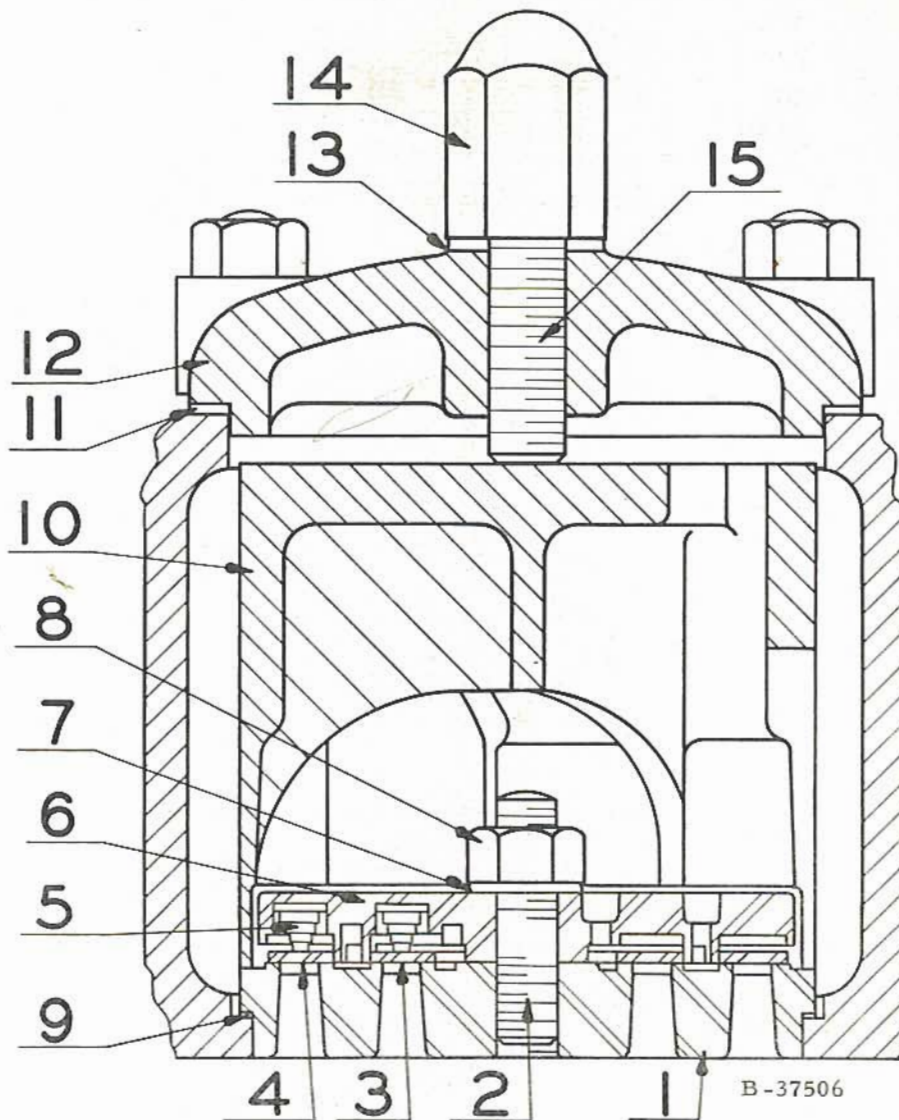
REF. NO.	NAME OF PART	NO. REQ'D. PER COMP.	MODELS WXE-9505 WXE-9509
	<u>HIGH PRESSURE SUCTION VALVE (PLAIN)</u>		SYMBOL
	HPS Valve Assembly Complete, All the following parts	1	WAF-164M
	HPS Suction Valve Assembly, Incl. Parts #1 thru 6	1	1-WBG-563
1	Seat	1	7-YC-14
2	Spring	6	78C6
3	Bumper with Stud, Washer & Nut *	1	WAF-164X
4	Valve (Inner)	1	90E3
5	Valve (Outer)	1	90E6
6	Seat Gasket	1	25L6
7	Bumper Stud *	1	79C25
8	Bumper Washer *	1	95H5
9	Bumper Nut *	1	50AH5
10	Clamp	1	1-RXB-194
11	Clamp Screw	1	76GG12
12	Clamp Screw Gasket	1	25F13
13	Clamp Screw Nut	1	50Q17
14	Valve Cover	1	1-WBG-11
15	Valve Cover Gasket	1	25R27

* Stud, Washer and Nut furnished with Bumper but they may be purchased separately.



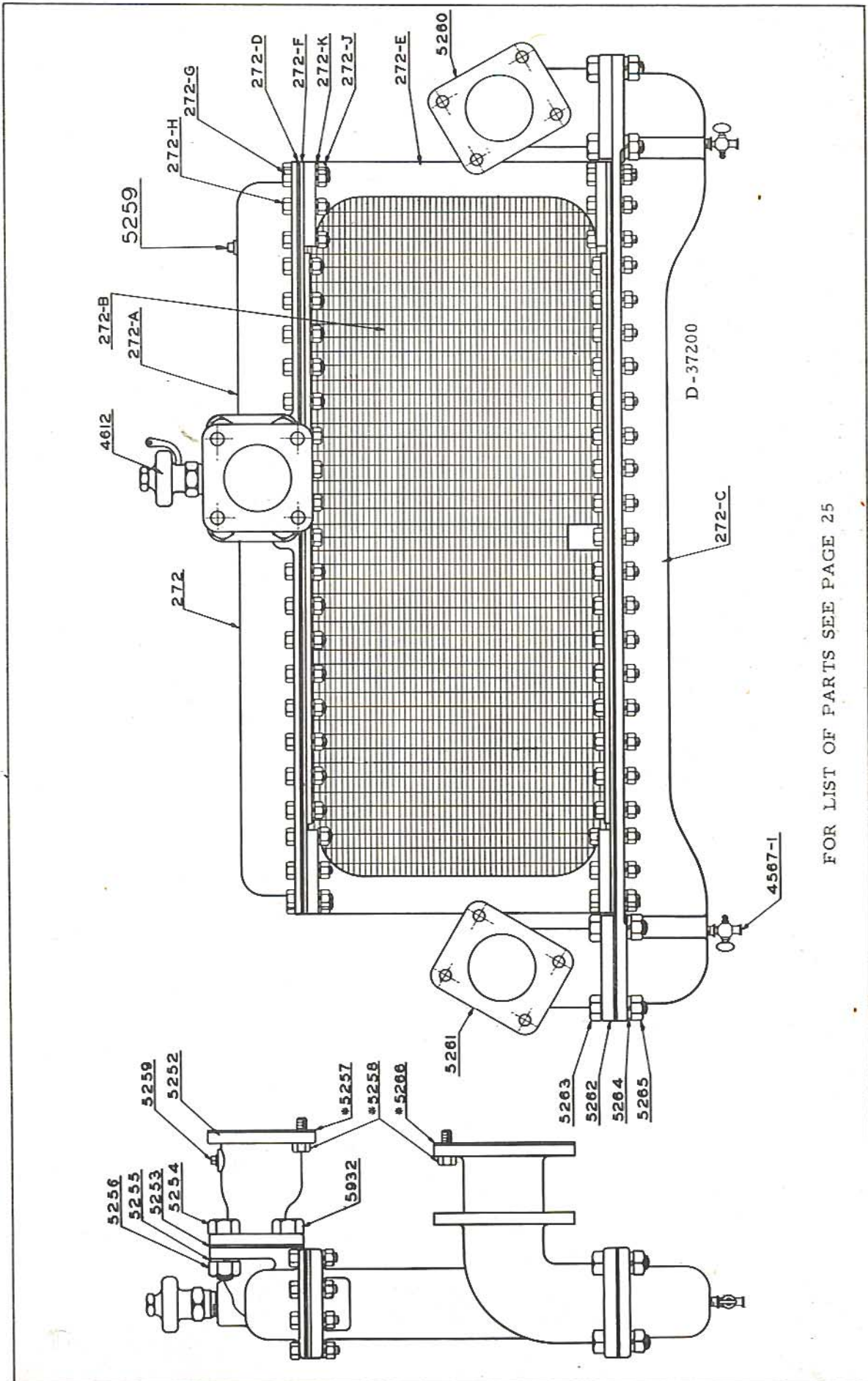
REF. NO.	NAME OF PART	NO. REQ'D. PER COMP.	MODEL <u>WXE-9514</u>
	<u>HIGH PRESSURE SUCTION UNLOADING VALVE</u>		SYMBOL
	HP Suction Unldg. Valve Assembly, Incl. all the following	1	2-WXE-568
	HP Suction Valve Assembly	1	1-WBG-563
202-HP	Valve Seat	1	7-YC-14
200	Valve (Inner)	1	90E3
201-HP	Valve (Outer)	1	90E6
188	Spring	6	78F4
4218-HP	Seat Gasket	1	25L6
134-HP	Bumper with Stud, Washer & Nut *	1	WAF-164X
204-HP	Stud *	1	79C25
5093-HP	Washer *	1	95H5
5092-HP	Nut *	1	50AH5
5575-M	Upper Plunger Spring	1	78A160
217-HP	Lower Plunger	1	WBG-217
220	Lower Plunger Spring	1	78A124
187-HPS	Valve Clamp	1	1-WBG-194
189-HPS	Valve Clamp Set Screw	3	76GG4
5094-HPS	Valve Clamp Set Screw Gasket	3	25F15
526-HPS	Valve Clamp Set Screw Nut	3	50Q13
185-HP	Valve Cover	1	1-WBG-185
525-HPS	Valve Cover Gasket	1	25R27
1357-M	Upper Cover Gasket	1	25C1357
530	Upper Cover Screw	3	75A130
	Cover & Upper Plunger Assembly	1	WXE-968
723-M	Upper Plunger Cover	1	WCE-723
467-M	Upper Plunger	1	2-WXE-467
6556-M	Upper Plunger Ring	1	65A56
274-M	Upper Plunger Cap	1	WHD-274
711-M	Upper Plunger Cap Gasket	1	25C531
531-M	Upper Plunger Cap Screw	2	75A4

* Stud, Washer and Nut furnished with Bumper but they may be purchased separately.



REF. NO.	NAME OF PART	NO. REQ'D. PER COMP.	MODELS WXE-9501 THRU WXE-9514
	<u>HIGH PRESSURE DISCHARGE VALVE</u>		SYMBOL
	HPD Valve Assembly, Incl. Parts #1, 3, 4, 5, 6 & 9	1	WBG-507
1	HPD Valve Seat with Stud, Washer & Nut *	1	YC-127X
2	HPD Valve Seat Stud *	1	79C25
3	HPD Valve (Inner)	1	90E3
4	HPD Valve (Outer)	1	90E6
5	HPD Valve Spring	6	78C6
6	HPD Valve Bumper	1	WAF-128
7	HPD Valve Seat Stud Washer *	1	95H5
8	HPD Valve Seat Stud Nut *	1	50C5
9	HPD Valve Seat Gasket	1	25L6
10	HPD Valve Clamp	1	AAG-194
11	HPD Valve Cover Plate Gasket	1	25R27
12	HPD Valve Cover Plate	1	1-WBG-11
13	HPD Valve Clamp Screw Gasket	1	25F13
14	HPD Valve Clamp Screw Nut	1	50Q17
15	HPD Valve Clamp Screw	1	76GG1

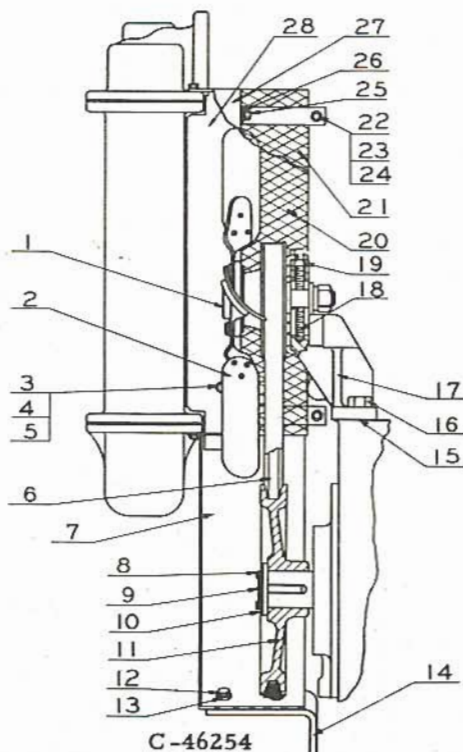
* Stud, Washer and Nut furnished with Seat but they may be purchased separately.



FOR LIST OF PARTS SEE PAGE 25

REF. NO.	NAME OF PART	NO. REQ'D. PER COMP.	MODELS	MODELS	MODELS	MODELS	MODELS	MODELS	MODELS	MODEL	MODEL	MODEL
	INTERCOOLER & FITTINGS		SYMBOL	SYMBOL	SYMBOL	SYMBOL	SYMBOL	SYMBOL	SYMBOL	SYMBOL	SYMBOL	SYMBOL
	See Dwg. D-37200											
272	Intercooler Assembly	1	1-WXE-272	1-WXE-272	WXG-272	WXG-272	WXG-272	WXG-272	WXG-272	WXG-272	WXG-272	1-WXE-272
272-A	Top Tank	1	WXE-623	WXE-623	WXE-623	WXE-623	WXE-623	WXE-623	WXE-623	WXE-623	WXE-623	WXE-623
272-B	Core Assembly	1	8A41	8A41	8A44	8A44	8A44	8A44	8A44	8A44	8A44	8A41
272-C	Bottom Tank	1	WXE-624	WXE-624	WXE-624	WXE-624	WXE-624	WXE-624	WXE-624	WXE-624	WXE-624	WXE-624
272-D	Core to Top & Bottom Tank Gasket	2	25C1537	25C1537	25C1537	25C1537	25C1537	25C1537	25C1537	25C1537	25C1537	25C1537
272-E	Side Member	2	WXE-628	WXE-628	WXG-628	WXG-628	WXG-628	WXG-628	WXG-628	WXG-628	WXG-628	WXE-628
272-F	Core Washer	4	WXG-810	WXG-810	WXG-810	WXG-810	WXG-810	WXG-810	WXG-810	WXG-810	WXG-810	WXG-810
272-G	Cap Screw (Long)	92	75A35	75A35	75A35	75A35	75A35	75A35	75A35	75A35	75A35	75A35
272-H	Cap Screw (Short)	8	75A34	75A34	75A34	75A34	75A34	75A34	75A34	75A34	75A34	75A34
272-J	Nut	92	50B2	50B2	50B2	50B2	50B2	50B2	50B2	50B2	50B2	50B2
272-K	Lock Washer	100	95B2	95B2	95B2	95B2	95B2	95B2	95B2	95B2	95B2	95B2
5261	Intercooler Suction Elbow (LH) *	1	WXE-240	10-WXE-240	WXE-240	WXE-240	WXE-240	WXE-240	WXE-240	10-WXE-240	10-WXE-240	10-WXE-240
5260	Intercooler Suction Elbow (RH) *	1	1-WXE-240	11-WXE-240	1-WXE-240	1-WXE-240	1-WXE-240	1-WXE-240	1-WXE-240	11-WXE-240	11-WXE-240	11-WXE-240
5262	Elbow to Intercooler Gasket	2	25C1034	25C1034	25C1034	25C1034	25C1034	25C1034	25C1034	25C1034	25C1034	25C1034
5263	Elbow to Intercooler Screw	8	75A39	75A39	75A39	75A39	75A39	75A39	75A39	75A39	75A39	75A39
5264	Elbow to Intercooler Screw Washer	8	95B5	95B5	95B5	95B5	95B5	95B5	95B5	95B5	95B5	95B5
5265	Elbow to Intercooler Screw Nut	8	50B5	50B5	50B5	50B5	50B5	50B5	50B5	50B5	50B5	50B5
5252	HP Suction Connector	1	WXE-255	5-WXE-255	WXE-255	WXE-255	WXE-255	WXE-255	WXE-255	5-WXE-255	5-WXE-255	8-WXE-255
5253	Connector to Intercooler Gasket	1	25C1035	25C1035	25C1035	25C1035	25C1035	25C1035	25C1035	25C1035	25C1035	25C1035
5254	Connector to Intercooler Screw	2	75A39	75A39	75A39	75A39	75A39	75A39	75A39	75A39	75A39	75A39
5255	Connector to Intercooler Washer	2	95B5	95B5	95B5	95B5	95B5	95B5	95B5	95B5	95B5	95B5
5256	Connector to Intercooler Nut	2	50B5	50B5	50B5	50B5	50B5	50B5	50B5	50B5	50B5	50B5
5932	Connector to Intercooler Screw	2	75AA1	75AA1	75AA1	75AA1	75AA1	75AA1	75AA1	75AA1	75AA1	75AA1
5259	Connector & Gauge Opening Plug	2	64AA5	64AA5	64AA5	64AA5	64AA5	64AA5	64AA5	64AA5	64AA5	64AA5
4612	Safety Valve	1	90G211	90G211	90G211	90G211	90G211	90G211	90G211	90G211	90G211	90G211
4567-1	Drain Cock	2	90W1	90W1	90W1	90W1	90W1	90W1	90W1	90W1	90W1	90W1
5266	Intercooler to LP Head Gasket	2	25C541	25C541	25C541	25C541	25C541	25C541	25C541	25C541	25C541	25C541
5257	Intercooler to HP Head Gasket	1	25C542	25C542	25C542	25C542	25C542	25C542	25C542	25C542	25C542	25C542
5258	Intercooler to Head Screw	12	75AA1	75AA1	75AA1	75AA1	75AA1	75AA1	75AA1	75AA1	75AA1	75AA1

* To determine the Right Hand and Left Hand side of the compressor, stand at the end of the crankshaft opposite the intercooler and face the compressor.



REF. NO.	NAME OF PART	NO. REQ'D. PER PUMP	MODELS WXE-9505 WXE-9509
	<u>INTERCOOLER FAN</u>		SYMBOL
1	Fan Hub Assembly	1	9A9
2	Fan Blade	1	9B20
3	Guard to Intercooler Shroud Screw	2	75A185
4	Guard to Intercooler Shroud Washer	4	95A1
5	Guard to Intercooler Shroud Nut	2	50B1
6	Fan Drive Vee Belt	1	13C53
7	Fan Belt Guard	1	3-WXE-393
8	Sheave to Shaft Screw	2	75B61
9	Wire	1	97A1
10	Sheave to Shaft Washer	1	95D121
11	Fan Drive Sheave	1	1-WAD-123
12	Guard to Bracket Screw	4	75A32
13	Guard to Bracket Washer	4	95A1
14	Fan Belt Guard Bracket	2	WXE-772
15	Fan Bracket to Case Gasket	1	25C546
16	Fan Bracket to Case Screw	2	75AA1
17	Fan Bracket	1	1-WAD-160
18	Hub Adjusting Screw	1	75AA49
19	Hub Adjusting Screw Lock Nut	1	95B2
20	Fan Guard (RH)	1	2-WXE-393
21	Fan Guard (LH)	1	1-WXE-393
22	Fan Guard Screw	2	75A185
23	Fan Guard Nut	2	50B1
24	Fan Guard Washer	2	95B1
25	Guard to Intercooler Shroud Screw	2	75A185
26	Guard to Intercooler Shroud Washer	6	95A1
27	Intercooler Fan Shroud (LH)	1	WXE-648
28	Intercooler Fan Shroud (RH)	1	1-WXE-648

NAME OF PART	NO. REQ'D. PER COMP.	MODELS WXE-9505 WXE-9509
Motor End Plate Guard	1	12-SPE-38
Guard Clamp Guard Screw	2	75A37
Guard Clamp Guard Screw Nut	2	50B3
Guard Clamp Guard Screw Washer	2	95A3
Motor End Plate Guard	2	11-SPE-38
Motor End Plate Guard Screw	4	75A98
Motor End Plate Guard Washer	8	95A2
Motor End Plate Guard Nut	4	50B2

GARDNER-DENVER

SALES AND SERVICE OFFICES IN THE U. S. A.

ATLANTA 9, GEORGIA, 1114 W. Peachtree St., N. W.
BIRMINGHAM 4, ALABAMA, 716 North 9th St.
BOSTON 15, MASSACHUSETTS, 1020 B Commonwealth Ave.
BUFFALO: KENMORE 17, NEW YORK, 10 Euclid Ave.
BUTTE, MONTANA, 215 E. Park St.
CHICAGO 7, ILLINOIS, 1200 West Fulton St.
CLEVELAND 11, OHIO, 3088 West 117th St.
CORPUS CHRISTI, TEXAS, 717 Wilson Bldg.
DALLAS 35, TEXAS, 7125 Harry Hines Blvd.
DENVER 1, COLORADO, 1727 East 39th Ave.
DETROIT: OAK PARK 37, MICHIGAN, 12700 Capital Ave.
DULUTH 2, MINNESOTA, 521 East Superior St.
EL PASO, TEXAS, 1704 East Paisano Drive
HOUSTON, TEXAS, 2201 Polk Ave.
INDIANAPOLIS 27, INDIANA, 3957 S. Meridian St.
KANSAS CITY 14, MISSOURI, 309 West 79 Terrace
KNOXVILLE 17, TENNESSEE, 214 W. Magnolia Ave.
LANSING, MICHIGAN, 3004 Turner St.
LOS ANGELES 22, CALIFORNIA, 7654 East Slauson Ave.
LOUISVILLE 16, KENTUCKY, 2003 Crum's Lane-Shively
MIDLAND, TEXAS, Room 306, Central Bldg.
MILWAUKEE 3, WISCONSIN, 610 West Michigan St.
NEW ORLEANS 25, LOUISIANA, 7735 Edinburgh St.
NEW YORK: TETERBORO, NEW JERSEY, 700 Huyler St.
OKLAHOMA CITY, OKLAHOMA, 2311 Liberty Nat'l. Bank Bldg.
PHILADELPHIA 40, PENNSYLVANIA, 4309-11 Rising Sun Ave.
PITTSBURGH 26, PENNSYLVANIA, 520 McNeilly Rd.
QUINCY, ILLINOIS, Gardner Drive
RICHMOND 21, VIRGINIA, 3917 W. Franklin St.
ST. LOUIS: ROBERTSON, MISSOURI, U. S. 66, P. O. Box "H"
ST. PAUL 4, MINNESOTA, 1567½ Selby
SALT LAKE CITY, UTAH, 113 West 2nd South St.
SAN FRANCISCO 7, CALIFORNIA, 811 Folsom St.
SEATTLE 4, WASHINGTON, 615 Eighth Ave., South
TULSA 16, OKLAHOMA, 6746 East 11th St.
WALLACE, IDAHO, 407 Seventh St.
WASHINGTON 4, D. C., 806-809 Munsey Bldg.
WICHITA, KANSAS, Room 903, Central Bldg.

GARDNER-DENVER WESTERN HEMISPHERE CO., NEW YORK, NEW YORK
NEW YORK EXPORT DIVISION, 233 Broadway, NEW YORK 7, NEW YORK

SALES AND SERVICE OFFICES IN CANADA

GARDNER - DENVER COMPANY (CANADA), LIMITED

EDMONTON, ALBERTA, 14415-114 Ave.
KIRKLAND LAKE, ONTARIO, P. O. Drawer No. 756
MONCTON, NEW BRUNSWICK, East Main St.
MONTREAL 28, QUEBEC, 5411 Western Ave.
NELSON, BRITISH COLUMBIA, 745 Baker St.
SUDBURY, ONTARIO, 907 LaSalle Rd.
TORONTO 16, ONTARIO, 14 Curity Ave.
VANCOUVER 9, BRITISH COLUMBIA, 1775 Pine St.

WINNIPEG 3, MANITOBA, 1400 Sargent Ave.

INTERNATIONAL SALES AND SERVICE OFFICES

GARDNER-DENVER COMPANY, (AFRICA) PTY., LTD., P. O. Box 4807, JOHANNESBURG, SOUTH AFRICA
GARDNER-DENVER, COMPANY, (NORTHERN RHODESIA) LTD., P. O. Box 18, NDOLA, NORTHERN RHODESIA
GARDNER-DENVER COMPANY OF MEXICO, S. A., Apartado 575, MEXICO CITY 6, D. F., MEXICO
GARDNER-DENVER (AUSTRALIA) PTY., LTD., 70 Hotham Parade, ARTARMON, N. S. W., AUSTRALIA
GARDNER-DENVER COMPANY (BELGIUM) S. A., 60, rue Ravenstein, BRUXELLES, BELGIUM

GARDNER-DENVER WESTERN HEMISPHERE COMPANY

Apartado Nacional #553
BARRANQUILLA, COLOMBIA

Apartado 674
LIMA, PERU, SOUTH AMERICA

Avenida Churchill 94-B
RIO DE JANEIRO, BRAZIL

GARDNER-DENVER COMPANY

EXECUTIVE OFFICES: QUINCY, ILLINOIS

FACTORIES:

QUINCY, ILLINOIS (2)
LA GRANGE, MISSOURI
GRAND HAVEN, MICHIGAN
REED CITY, MICHIGAN
DENVER, COLORADO
DALLAS, TEXAS
WOODSTOCK, ONTARIO
JOHANNESBURG, S. AFRICA