

NELSON COLLAO V.

CATALOGOS CODIFICADOS

EQUIPOS DE FRENO DE CARROS METALEROS
Y LOCOMOTORAS GR-12

REVISION EFECTUADA POR DPTO. MANT. MECANICO
OCT. - NOV. 1982

REPUESTOS DE FRENO CARROS METALEROS

CAJON N° 129

<u>C O D I G O</u>	<u>N° REPUESTO</u>	<u>DESCRIPCION</u>	<u>CANTIDAD</u>
211 03 0022	98065	NUT	4
0023	558494	HANDLY ASSY	1
0024	1368	SCREW	5
0026	1367	SPRING	3
0030	558474	SHAFT CAM	1
0034	558470	CAM	1
0035	558469	SPRING	5
0037	64910	SCREW	9
0039	562074	SHAFT	3
0040	70575	SPRING	4
0042	526445	RING	2
0043	524935	RINGS RUBBER	12
0045	558462	PLUG	1
0046	561717	VALVE	1
0048	558460	RING	2
0049	529009	VALVE, CHECK	4
0050	562336	SPRING	3
0052	559377	STRAINES	4
0053	559378	BODY	2
0054	506276	FILTER CHRGIN CHOKE FELT	15
0058	547785	PIN	2
0059	558468	PIN	2
0062	534031	RING GASKET	5
0063	558938	RING	3
0064	554995	VALVE ASSY	5
0065	850021	RING RETAINER	2
0066	554996	SEAL	3
0071	562292	SPRING	3
0073	536239	RING GASKET	4
0076	559771	DIAPHRAGM	3
0081	536300	DIAPHRAGM	4

<u>C O D I G O</u>	<u>Nº REPUESTO</u>	<u>DESCRIPCION</u>	<u>CANTIDAD</u>
211 03 0082	540570	RING	3
0084	559412	VALVE EXHAUST	6
0085	850029	RETAINER	1
0087	562295	SPRING	5
0092	524614	RING	19
0094	562294	SPRING	3
0098	526835	UNIT STRAINERS	5
0110	562301	SEAT	4
0111	562293	SPRINGS	3
0117	560418	SEAT	2
0125	508046	SPRING	1
0127	558479	VALVE SUPPRESSION	2
0128	93070	SPRING	3
0129	524612	RING RUBBER	38
0130	558477	VALVE EMERGENCY	1
0136	558481	VALVE	2
0138	558483	SEAL	1
0139	557394	GASKET	3
0173	536904	RING	3
0182	558508	VALVE	4
0183	558407	PIN	2
0185	535758	PIN	1
0188	558509	PIN	1
0189	549494	PIN SPRING	3
0191	557928	HANDLE ASSY	2
0195	562337	SPRING HANLINY ASSY	2
0204	562307	SEAT	3
0205	561135	SPRING	3
0214	557237	GASKET	7
0233	558172	SPRING	6
0234	558171	GUIDES	2
0238	558169	GUIDE	2

<u>C O D I G O</u>	<u>N^o REPUESTO</u>	<u>DESCRIPCION</u>	<u>CANTIDAD</u>	
211 03 0239	558412	SPRING	7	
	0240	508371	CHECK VALVE	4
	0241	531129	CHOKE	1
	0242	525033	WIRE	255
	0244	525032	FILTER	252
	0251	558211	PISTON	3
	0253	558159	PIN	3
	0254	523732	RING RUBBER	10
	0259	558409	PISTON	1
	0260	558153	RING	3
	0261	558152	SPRING	2
	0262	558151	SPRING	1
	0266	558413	PISTON	3
	0267	558174	SPRING	3
	0271	552072	EXCLUDES WASP	4
	0278	558421	SPRING	2
	0282	523842	RING	20
	0283	558420	PISTON	2
	0288	558425	PISTON	2
	0290	97130	EXCLUDER	8
	0294	557173	GASKET	4
	0295	557174	GASKET	4
	0299	513595	STRAINER	6
	0305	527583	STRAINER	6
	0326	556448	COVER TAP	2
	0330	559387	PIN	4
	0332	559386	CARRIER VALVE	2
	0334	553823	GASKET	1
	0340	556305	SPRING	3
	0342	556306	STEAM	2
	0346	97368	GASKET	3
	0404	523364	CAPSCREW	6

<u>C O D I G O</u>	<u>N^o REPUESTO</u>	<u>DESCRIPCION</u>	<u>CANTIDAD</u>
211 03 0405	519389	SCREW	4
0406	559304	PIN	2
0408	559303	PLATE	2
0409	559301	SHAFT	1
0410	539587	SPRING	2
0411	559302	HANDLE	1
0412	503951	NUT	1
0413	559300	VALVE	1
0414	559296	BODY VALVE	1
0466	560504	VALVE	1
0469	560981	VALVE	2
0514	97630	RETAINER	2
0695	537404	VALVE	2
0712	536854	VALVE	2
0714	16087	NUT	3
0715	12797	RING	3
0716	12798	RING	3
0869	2097	CAP	3
0870	2098	SPRING COCK KEY	109
1024	572476	COCK	2
1247	94915	FITTING	10
1277	534873	FITTING COMPLETE	6
1283	534269	COMPRESSION RING	24
1300	527188	PAD	18
1416	532616	GASKET	4
1429	533461	PISTON	2
1432	533463	PAWL LIN	5
1433	88952	PAWL SPRING	65
1434	533480	COVER	12
1435	533464	PISTON SPRING COVER	20
1438	558872	BODY	1
1444	533479	LEVER BRACKET	2

<u>C O D I G O</u>	<u>Nº REPUESTO</u>	<u>DESCRIPCION</u>	<u>CANTIDAD</u>
211 03 1505	78421	DIRT CHAMBER	4
	1509	CHECK VALVE	9
	1513	COCK KEY HANDLE	11
	1516	COVER COCK KEY	3
	1603	PISTON COMPLETE	1
	1621	PISTON PILOT VALVE	6
	1623	SPRING PILOT VALVE	22
	1627	STRAINER	22
	1628	STRAINER RETAINER	99
	1631	ANILLOS	1
	1639	SEAL HOLLOW	34
	1644	SOCKET PIPE PLUS	1
	1645	INDICATOR ASSY	2
	1647	PISTON SWAB	39
	1650	PISTON	12
	1658	BLANKING PAD	18
	1670	PLUNGER SPRING	29
	1672	PIN CAM DOG	51
	1673	CHECK VALVE	12
	1674	SPRING VALVE	56
	1675	CAP NUT CHECK VALVE	3
	1682	CAM SHAFT	4
	1704	STRAINER NUT	7
	1718	CHOKE PLUG	43
	1721	PISTON	3
	1725	SPRING SLIDE VALVE	10
	1730	PISTON SPRING	12
	1732	RETURN SPRING GAGE	5
	1733	RETURN SPRING	13
	1740	VALVE DIAPHRAGM	6
	1744	CHECK VALVE	7
	1746	SEAT CHECK VALVE SPRING	29
	1747	GUIDE	32
	1749	CHECK VALVE PLUNGER	16

<u>C O D I G O</u>	<u>Nº REPUESTO</u>	<u>DESCRIPCION</u>	<u>CANTIDAD</u>
211 03 1751	95023	LIMITING VALVE	7
1753	504207	RELEASE VALVE COMPLETE	10
1754	95047	FITTING DUPLEX RELEASE	8
1756	95171	RELEASE VALVE BODY	8
1762	93972	SPRING	16
1763	94911	RELEASE INSURING DIAP.	3
1764	94856	RELEASE INSURING VALVE	25
1766	96026	RELEASE INSURING VALVE	47
1767	96024	NUT RELEASE INSURING	3
1769	94963	PLATE END	10
1770	96020	BUSHING	3
1771	518089	LUBRICATING WICK SERV.	30
1774	514173	OIL PLUG	6
1775	96022	LOCK NUT	10
1776	96023	ADJUSTING NUT	12
1778	97379	SLIDE VALVE SPRING PIN	10
1779	516617	RELEASE INSURING VALVE	30
1781	525022	RETAINING	15
1782	525020	CHARGING CHOKE	7
1785	56992	PIPE PLUG	51
1799	94839	DIAPHRAGM SPRING	40
1801	94864	SLIDE VALVE STRUT	8
1804	95053	LARGE VENT. VALVE PISTON	4
1809	87010	LARGE PISTON RIG	10
1810	96080	SMALL VENT VALVE PISTON	10
1811	81643	VENT VALVE PISTON SPRING	8
1813	94880	VENT VALVE PISTON SPRING	10
1817	95033	PISTON AND STEM	2
1819	94840	CHECK VALVE SPRING	9
1820	94837	INSHOT PISTON SPRING SHIM	15
1823	14284	INSHOT PISTON RING	12
1824	94834	INSHOT PISTON NUT	6
1825	95032	SPRING	28

<u>C O D I G O</u>	<u>N^o REPUESTO</u>	<u>DESCRIPCION</u>	<u>CANTIDAD</u>
211 03 1828	97286	CHOKE PLUG	10
1829	95077	INSHOT PISTON SPRING	9
1834	93840	GASKET	50
1839	85814	EMERGENCY PISTON RING	12
1840	500944	RETURN SPRING	21
1841	506277	CHAMBER CHARGING CHOKE	14
1843	94871	CHOKE PLUG	15
1844	95078	INSHOT PISTON	6
1846	95084	ACELERATED ROL CHECK SPRING	10
1855	525802	RETAINERS	30
1856	502465	SEAL VENT PROTECTOR	20
1957	501328	BODY HANDLE	9
1958	501327	SOCKET	10
2197	544256	CAGE	3
2022	533638	BRACKET	31
2204	48458	CHOKE STRAINER	6
2217	15043	CAPSCREW	39
2229	534403	COMPRESSION RING	156
2236	534742	NUT	6
2289	94021	FITTING	3
2420	14561	SEAL, CHECK VALVE	6
2422	86216	COVER SEAL	6
2424	87017	PISTON RING	12
2426	91659	CASE GASKET	2
2428	91660	GASKET	2
2430	91662	GASKET	2
2432	91667	COVER GASKET	2
2434	92273	SEAL	2
2438	506133	UPPER CASE	1
2440	516141	COVER	1
2442	506142	SPRINGS	1
2444	506143	VALVE GASKET	1
2446	506144	SEAT NUT	2

<u>C O D I G O</u>	<u>Nº REPUESTO</u>	<u>DESCRIPCION</u>	<u>CANTIDAD</u>
211 03 2448	506145	GUIDE, CHECK VALVE	1
2450	506147	STRAINER	3
2452	511290	WICK LUBRICATING	2
2454	514202	SPRING	1
2456	518777	PISTON	1
2458	523759	RINGS RUBBER	12
2463	524413	RINGS RUBBER	4
2464	536583	RING RUBBER	4
2466	536584	RINGS RUBBER	4
2472	559162	PISTON	1
2476	559549	GASKET KIT	1
2477	559547	GASKET KIT	1
2478	559551	GASKET KIT	1
2480	559553	GASKET KIT RUBBER	1
2482	559555	GASKET KIT	1
2486	560569	STRAINER & CHECK VALVE	1
2488	560724	KIT GASKET RUBBER	1
2490	560726	KIT	12
2493	560765	VALVE SPOOL	1
2494	561121	REPAIR KIT	1
2498	562813	SWABS	7
2508	563688	NUT ELASTIC STOP	2
2512	564081	DHIAPGRAM ?	1
2538	49650	PIN	27
2540	82559	ESCUTCHEON	86
2542	82560	HANDLE	10
2606	97947	NUT, STRAINER	2

CAJON N° 130

<u>C O D I G O</u>	<u>N° REPUESTO</u>	<u>DESCRIPCION</u>	<u>CANTIDAD</u>
211 03 0103	524715	RINGS RUBBER	9
0131	536582	RINGS RUBBER	4
0132	526388	RINGS RUBBER	4
0170	558497	VALVULA INDEPENDIENTE	2
0172	562052	SCREW	65
0207	531868	PACKING RING	16
0215	564056	O'RING	11
0341	523734	RING	20
0347	557290-0001	VALVULAS	2
0599	509060	CYLINDER	2
1522	11001	BOLTS	32
1614	526014	PISTON TUBE CAP	30
1636	539324	SPRING PISTON RELEASE	2
1643	547183	RETAINING RING	8
1655	3068	FILLING PIECE SCREW	100
1845	97588	PIPE PLUG	6
1863	96811	RESERVAIR GASKET	10
1952	549882	KEY COCK	11
2460	523816	VENT VALVE	2
2510	557943	VALVE CHECK	4
2552	562054	CAPSCREW	129
2554	560255 562055	CAPSCREW	23

CAJON Nº 131

<u>C O D I G O</u>	<u>Nº REPUESTO</u>	<u>DESCRIPCION</u>	<u>CANTIDAD</u>
211 03 1446	545110-2001	SLACK ADJUSTER	7
1610	539336	HOLLOW PISTON ROD	4
1695	563363	PIPE BRACKET	1
1696	96074	POSIONES DE TUBO	11

CAJON Nº 132

<u>C O D I G O</u>	<u>Nº REPUESTO</u>	<u>DESCRIPCION</u>	<u>CANTIDAD</u>
211 03 0219	557944	VALVULA CONTROL	1
0272	558403	BODY	1
0273	558414	PORTION	1
1612	548633	PISTON TUBE	3
1679	544070	CAM	11
1702	502904	STRAINER	67
1738	96052	VALVE COVER	10
1786	519717/519727	COVER SERVICE PORTION	24
1790	529255	COVER EMERGENCY PORTION	2
1798	95051	BALL CHECK VALVE,COVER	6
2023	564542	ELBOW COMPLETE	41
2088	87079	HOSE	15
2102	544552	HOSE	8
2192	652334	VALVE AB-1	12
2258	95495	TEE BODY BRAKE	29
2266	95490	BODY	46

CAJON Nº 133

<u>C O D I G O</u>	<u>Nº REPUESTO</u>	<u>DESCRIPCION</u>	<u>CANTIDAD</u>
211 03 1605	547173	CUERPO DE CILINDRO	3
2588		PIPE 1.3/8"Ø x 34"	3
2594		PIPE 1"Ø x 40"	4

PIEZAS SUELTAS

<u>C O D I G O</u>	<u>Nº REPUESTO</u>	<u>DESCRIPCION</u>	<u>CANTIDAD</u>
211 03 1889	96825	RESERVOIR	5

Quedan 3011000's '9.

211-03 - 0001

3208-26
Sup. 1A

0002
0010
0007

211-03-

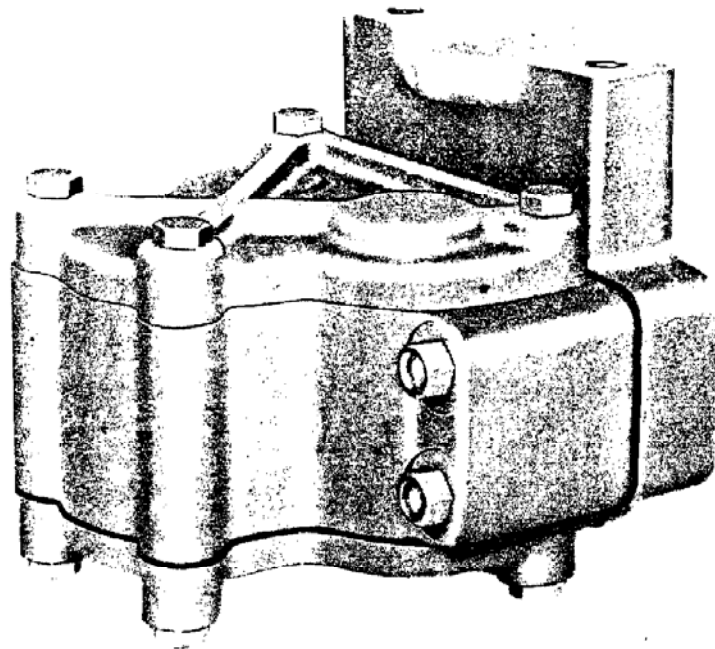
4/x/82

"F-1" TYPE SELECTOR VALVE


Parts Catalog No. 3208-26, Sup. 1A

December, 1959

(Supercedes Issue of June, 1958)



Westinghouse Air Brake COMPANY

AIR BRAKE DIVISION  WILMERDING, PA.

"F-1" TYPE SELECTOR VALVE

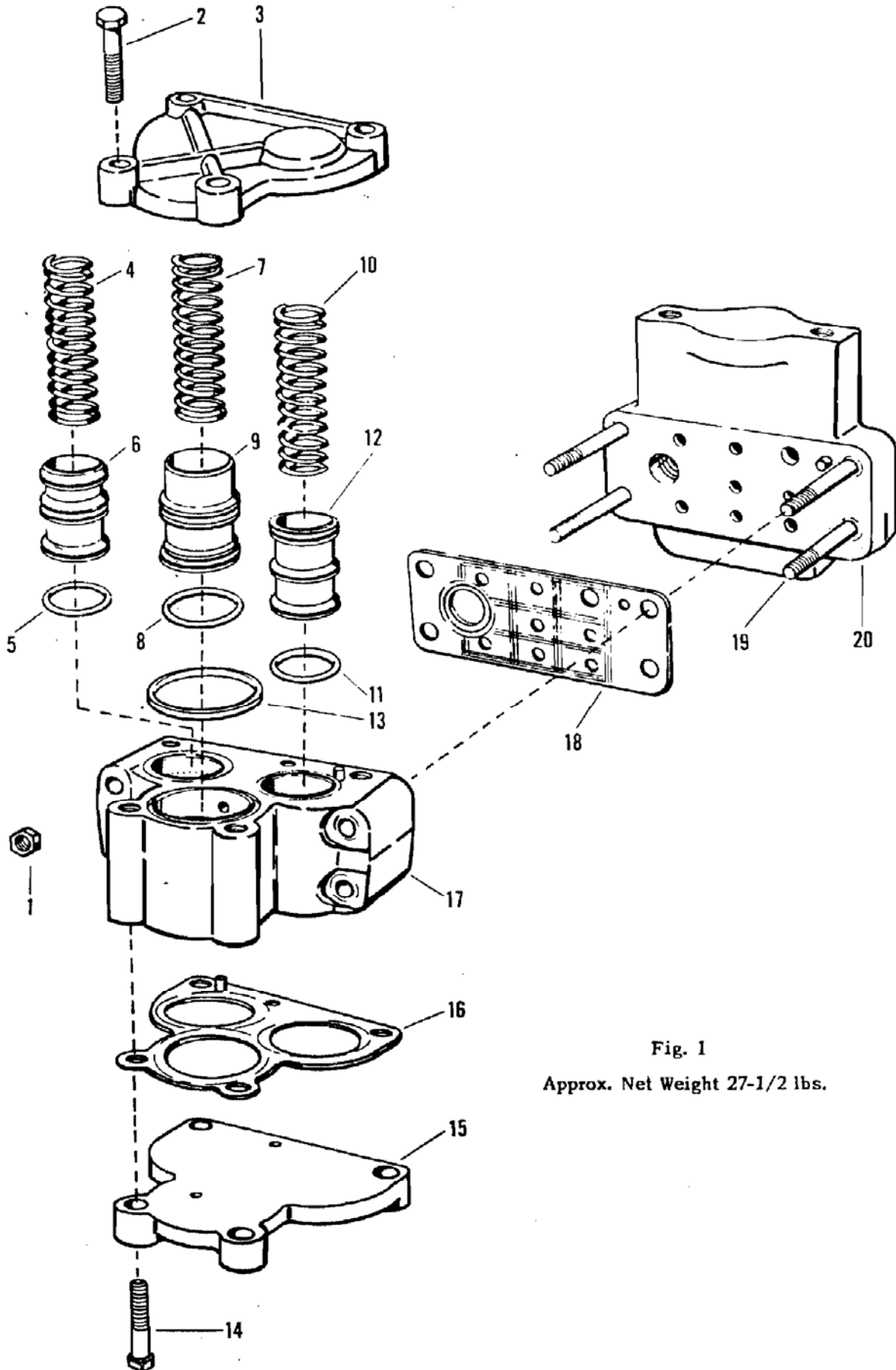


Fig. 1
Approx. Net Weight 27-1/2 lbs.

"F-1" TYPE SELECTOR VALVE

Fig. & Ref. No.	Pc. No.	Parts Name	No. Req'd
1-0001	557995	F-1 SELECTOR VALVE, ASSEMBLY	
1-0002	559325	.F-1 SELECTOR VALVE PORTION, ASSEMBLY	1
1-1 003	1296	..NUT, Hex, 3/8 in. <i>Tambien 063642</i>	4
1-2 004	17140	..SCREW, Cap, 3/8 x 1-3/4 in.	4
1-3 005	559320	..COVER, Valve Spring	1
1-4 006	*559314	..SPRING, Valve	1
1-5 007	%φ 536580	..RING, "O", WABCO®, 1-9/16 in. O.D.	4
1-6 008	559312	..VALVE, "B"	1
1-7 006	*559314	..SPRING, Valve	1
1-8 009	%φ 532282	..RING, "O", 1-5/8 in. O.D.	4
1-9 0010	559313	..VALVE, "C"	1
1-10 006	*559314	..SPRING, Valve	1
1-11 0013	%φ 524794	..RING, "O", 1-1/2 in. O.D.	3
1-12 0012	559311	..VALVE, "A"	1
1-13 0013	φ 533417	..GASKET, Valve Spring Cover	1
1-14 004	17140	..SCREW, Cap, 3/8 x 1-3/4 in.	4
1-15 0014	559315	..COVER, Bottom	1
1-16 0015	φ 558535	..GASKET, Bottom Cover.	1
1-17 0016	559306	..BODY, Valve	1
1-18 0017	φ** 558534	..GASKET, Pipe Bracket	1
1-19 0018	506706	..STUD, 3/8 x 3-3/8 in.	4
1-20 0019	559322	..PIPE BRACKET, ASSEMBLY.	1

(Includes Ref. Nos. 1-1 and 1-19)

** NOTE: Not a part of any Portion, but of the Complete Device.

* NOTE: For Spring Identification Tables, see Page 4.

We are prepared to furnish the following Kits for servicing the "F-1" Selector Valves.


- 211-03-0014 Kit, Complete, all rubber parts Pc. † 559555
 Kit, Complete, rubber items for moving parts . Pc. † 559556

†NOTE: Details for each Kit are identified as follows:

- φ : All Rubber parts Kit.
- % : Rubber items for Moving parts Kit.

SPRING IDENTIFICATION

The following table is shown to enable railroad men, storekeepers and all Air Brake men to identify the various springs used in the devices catalogued herein. It is based on calculated figures and the actual spring will vary somewhat, due to the small differences in wire diameter, coil diameter, number of turns, etc. This tabulation is intended for identification only and should not be used for any other purpose. It does not represent a specification for the springs mentioned.

		SPRING IDENTIFICATION				
Pc. No.	Approx. Out. Dia. "A" in.	Approx. Dia. Wire "B" in.	Approx. Free Ht. "C" in.	Approx. No. Turns *	Material	Name of Spring
559314	1-5/64	.138	3-11/16	12	Steel	Valve Spring

* NOTE: The number of turns to be counted from the extreme ends of the wire.

Prices will be quoted upon application
 Orders should give PIECE NUMBER and NAME of part wanted

Westinghouse Air Brake Company

Air Brake Division
 WILMERDING, PA., U.S.A.

OFFICES

- Atlanta 3 Candler Building
- Chicago 4 Railway Exchange Building
- Cleveland 13 520 Terminal Tower
- Denver 2 Gas and Electric Building
- Houston 1, Tex. 3611 Gulf Freeway
- Mexico D.F., Mexico Edificio Aztlan
- New York 1 Empire State Building
- St. Louis 3 Shell Building
- St. Paul 1 First National Bank Building
- San Francisco 4 812 Industrial Indemnity Building
- Sao Paulo, Brazil Caixa Postal 7128
- Washington 6, D.C. Ring Building

WESTINGHOUSE AIR BRAKE COMPANY
AIR BRAKE DIVISION
WILMORING, PA.

REPAIR SPECIFICATION R-42-C, SUP. 3
ISSUE NO. 1 AUGUST 20, 1959

INSTRUCTIONS FOR DISASSEMBLING, CLEANING,
REPAIRING AND ASSEMBLING THE F-1 TYPE
SELECTOR VALVE

Reference may be made to Part Catalog No. 3208-26,
Sup. 1-A for names of parts and their location in the selector valve.

I. LUBRICATING

- A. All "O" Rings and "O" Ring grooves must be lubricated with a light film of Silicone Grease Mil-G-4343.

II. DISASSEMBLING

- A. Remove the four (4) 3/8" cap screws which secure the spring cover to the valve body, then remove the spring cover.
- B. Remove the three springs, one from each valve.
- C. Remove the valve spring cover gasket.
- D. Turn the valve over so that the bottom cover is facing upward, then remove the four (4) 3/8" cap screws which secure the bottom cover to the valve body.
1. Remove the bottom cover
- E. Remove the bottom cover gasket.
- F. Remove valve "A" from valve body.
1. Remove the three (3) 1-1/2" O.D. "O" Rings from valve "A".
- G. Remove valve "B" from the valve body.
1. Remove the four (4) 1-9/16" O.D. "O" Rings from valve "B".

11. Remove valve "C" from the valve body.

1. Remove the four (4) 1-5/8" O.D. "O" Rings from valve "C".

III. CLEANING, INSPECTING, AND REPAIRING

- A. With the selector valve completely disassembled, all the parts must be cleaned and inspected.
- B. All the parts (excepting the body) must be washed in a suitable solvent that will dissolve oil or grease and permit all the parts to be thoroughly cleaned without abrasion. The exterior of the body must be thoroughly cleaned by means of a cloth or rag saturated with a suitable solvent.
- C. All gaskets, and "O" Rings may be dipped in a suitable solvent to assist in the removal of greasy dirt but these parts must be promptly wiped dry after cleaning and must not be allowed to soak in the cleaning fluid.
- D. Gaskets which have broken or flattened beads, or any that reveal cracks or cuts, must be rejected and replaced.
- E. Packing rings which are cut, cracked or otherwise damaged must be rejected and replaced.
- F. Serviceable gaskets must be brushed with a soft bristle brush (such as a shoe brush) to remove any remaining dirt and to polish.
- G. Clean all springs using a wire brush and suitable solvent, then inspect for rust pits, distortion, or permanent set, and replace where necessary.
- H. Replace all parts that are cracked, broken, worn excessively, damaged or in such a condition as would result in unsatisfactory operation.

IV. ASSEMBLING

- A. Valve "C" assembly.
 1. Insert the four (4) 1-5/8" O.D. "O" Rings into the grooves on valve "C".
 2. Insert valve "C" into the valve body with the open end of the valve in the direction of the spring cover.
- B. Valve "B" Assembly
 1. Insert the four (4) 1-9/16" O.D. "O" Rings into the grooves on valve "B".

2. Insert valve "B" into the valve body with the open end of the valve in the direction of the spring cover.
- C. Valve "A" Assembly
 1. Insert the three (3) 1-1/2" O.D. "O" Rings into the grooves on valve "A".
 2. Insert valve "A" into the valve body with the open end of the valve in the direction of the spring cover.
- D. Place the bottom gasket on the selector valve body, then place the bottom cover on the valve body and secure in place with the four (4) 3/8" cap screws.
- E. Turn the valve over so that the spring cover mounting face is at the top, then insert the spring cover gasket into the groove in the valve body.
- F. Insert a spring into each of the valves in the body.
- G. Place the spring cover on the valve body and secure in place with the four (4) 3/8" cap screws.

A.J.P.

RFB:lat

PETRO PARTS S. A.
VENEZUELA 4328 - V. Martelli

NUM.:

REF. FCA.: 559547

Juego Reparación: Volv.
Dist. Freno 26-e

Cant.: 50 Piezas

O/C N°.
1070

ITEM N°.
1

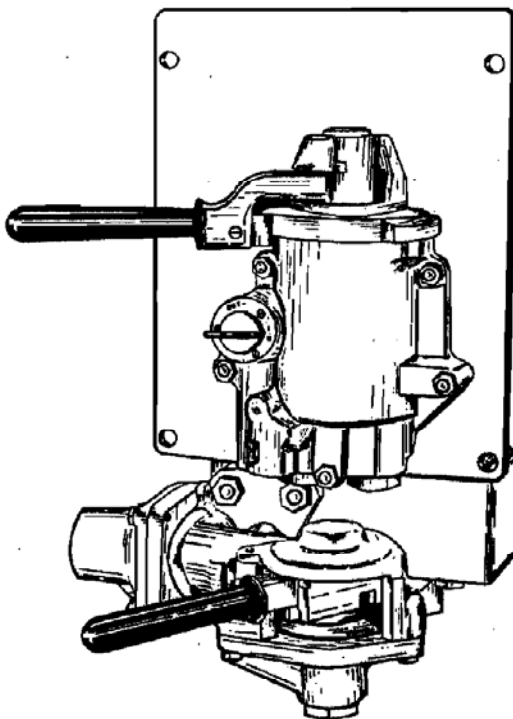
NO UTILIZAR GRASAS O ACEITES
EN JUNTAS FIJAS



"26-C" TYPE BRAKE VALVES

(SUPERSEDES ISSUE DATED FEBRUARY, 1977)

Parts Catalog



WARNING: AT THE TIME ANY PART IS REPLACED IN THIS DEVICE, THE OPERATION OF THE COMPLETE DEVICE **MUST** PASS A SERIES OF TESTS AS PRESCRIBED IN THE LATEST ISSUE OF THE APPLICABLE WABCO TEST SPECIFICATION. AT THE TIME THIS DEVICE IS APPLIED TO THE BRAKE EQUIPMENT ARRANGEMENT, A STANDING TEST **MUST** BE MADE TO INSURE THAT THIS DEVICE FUNCTIONS PROPERLY IN THE TOTAL BRAKE EQUIPMENT ARRANGEMENT. (Consult your local WABCO Representative for identity of the test specifications that cover this device).

Westinghouse Air Brake Division

WESTINGHOUSE AIR BRAKE COMPANY / Wilmerding, Pennsylvania

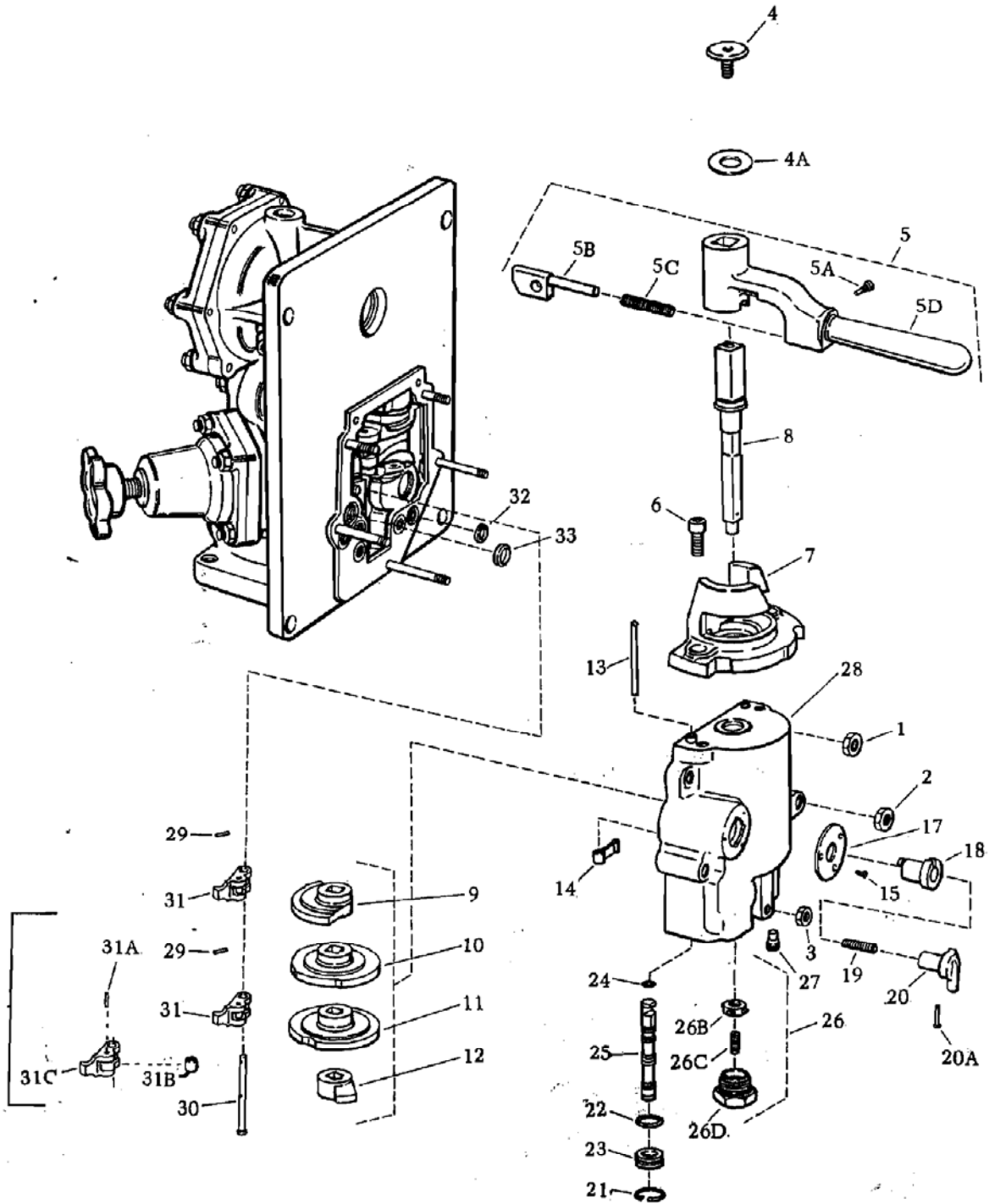


Figure 1

Repair Specification "R-42-C", covering the "26-B" and "26-C" Type Brake Valves is available on request.



BRAKE VALVE PORTION - Cont'd

Fig. & Ref.No.	Pc.No.	Parts Name	No. Req'd
2-34	558938	..RING, Retaining	1
2-35	554995	..SUPPLY VALVE, ASSEMBLY	1
2-35A	850021	..RING, Retaining	1
2-35B	554996	..SUPPLY VALVE SEAT, ASY.	1
2-35B1	562301	...RETAINER, Seal	1
2-35B2	♦ 850047	...SEAL	1
2-35B3	554952	...HOUSING, Seal	1
2-35C	□ ♦ 532257	..O-RING, 11/16 in. O.D.	1
2-35D	§ 562292	..SPRING	1
2-35E	554951	..CAGE, Supply Valve	1
2-36	♦ 536239	..O-RING, 1-7/16 in. O.D.	1
2-37	96500	..NUT, Hex., 5/16 in.	6
2-38	562317	..COVER, Relay	1
2-39	559771	..DIAPHRAGM, ASSEMBLY	1
2-39A	17152	..NUT, .190 in.	3
2-39B	562299	..SCREW, Retaining	3
2-39C	562313	..FOLLOWER, Lower	1
2-39D	559583	..FOLLOWER, Upper	1
2-40	♦ 536300	..DIAPHRAGM	1
2-41	540570	..RING, Retaining (1.625 Bore Dia.)	1
2-42	554953	..STEM, Diaphragm	1
2-43	559412	..EXHAUST VALVE, ASSEMBLY	1
2-43A	536868	..RING, Retaining	1
2-43B	562304	..CAGE, Valve	1
2-43C	§ 562295	..SPRING, Exhaust Valve	1

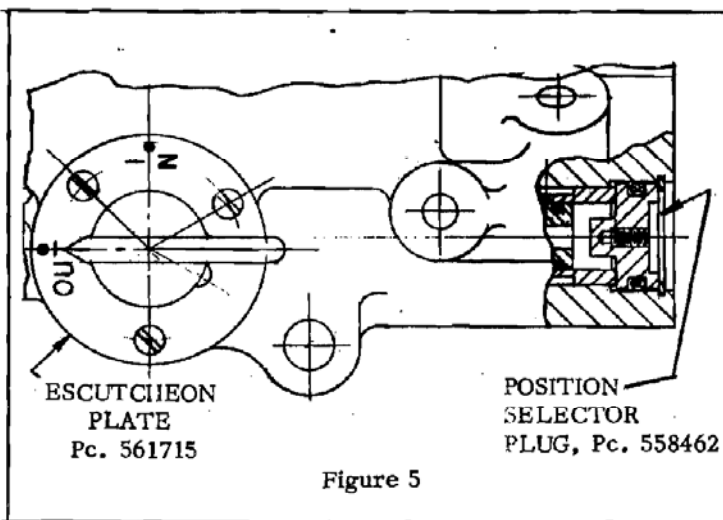
Fig. & Ref.No.	Pc.No.	Parts Name	No. Req'd
2-43D	558448	..VALVE SEAL, ASSEMBLY	1
2-43D1	562300	...RETAINER, Seal	1
2-43D2	♦ 557396	...SEAL	1
2-43D3	558449	...HOUSING	1
2-44	□ ♦ 524614	..O-RING, 15/16 in. O.D.	1
2-45	□ ♦ 532282	..O-RING, 1-5/8 in. O.D.	1
2-46	§ 562294	..SPRING, Stem	1
2-47	◄ 19506	SCREW, Hex.Hd., 1/2 x 5-1/2 in.	1
2-48	◄ 5196	SCREW, Hex.Hd., 1/2 x 4 in.	3
2-50	◄ ♦ 557395	GASKET, Pipe Bracket	1
2-51	□ 532282	..O-RING, 1-5/8 in. O.D.	1
2-52	558491	..PISTON	1
2-53	♦ 524715	..O-RING, 2-1/4 in. O.D.	2
2-54	558490	..SEAT, Valve, Cut-Off Eq. Res.	1
2-55	♦ 551188	..VALVE, Check	1
2-56	§ 562297	..SPRING	1

PIPE BRACKET PORTION

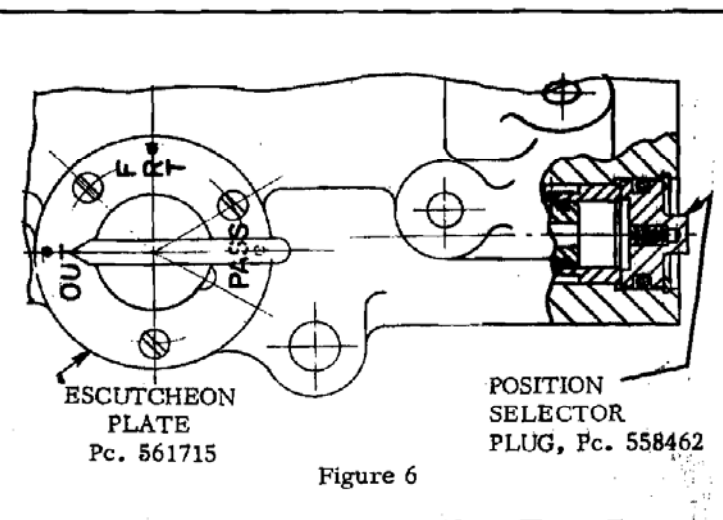
2-101	◄ 557237	GASKET, SA-26 Ind. Brake Valve	1
2-149	558411	PIPE BRACKET PORTION, ASY.	1
2-149A	526835	..STRAINER	2
2-149B	2505	..NUT, Hex., 1/2 in.	3
2-149C	554353	..STUD, 1/2 x 1-7/8 in.	3
2-149D	523178	..PLUG, H. Soc., 1/4 in. (Ports 1, 5 and 30) (Not Shown)	3

NOTES: §, For Spring Identification Table, see Page 8.
 □, Moving Parts Maintenance Details, see Page 8 for Kit.
 ♦, Overhaul Maintenance Details, see Page 8 for Kit.
 ◄, Not a part of the Portion, but of the Complete Device.

METHOD OF ASSEMBLY FOR
BRAKE VALVES CODED -2000



METHOD OF ASSEMBLY FOR
BRAKE VALVES CODED -1000



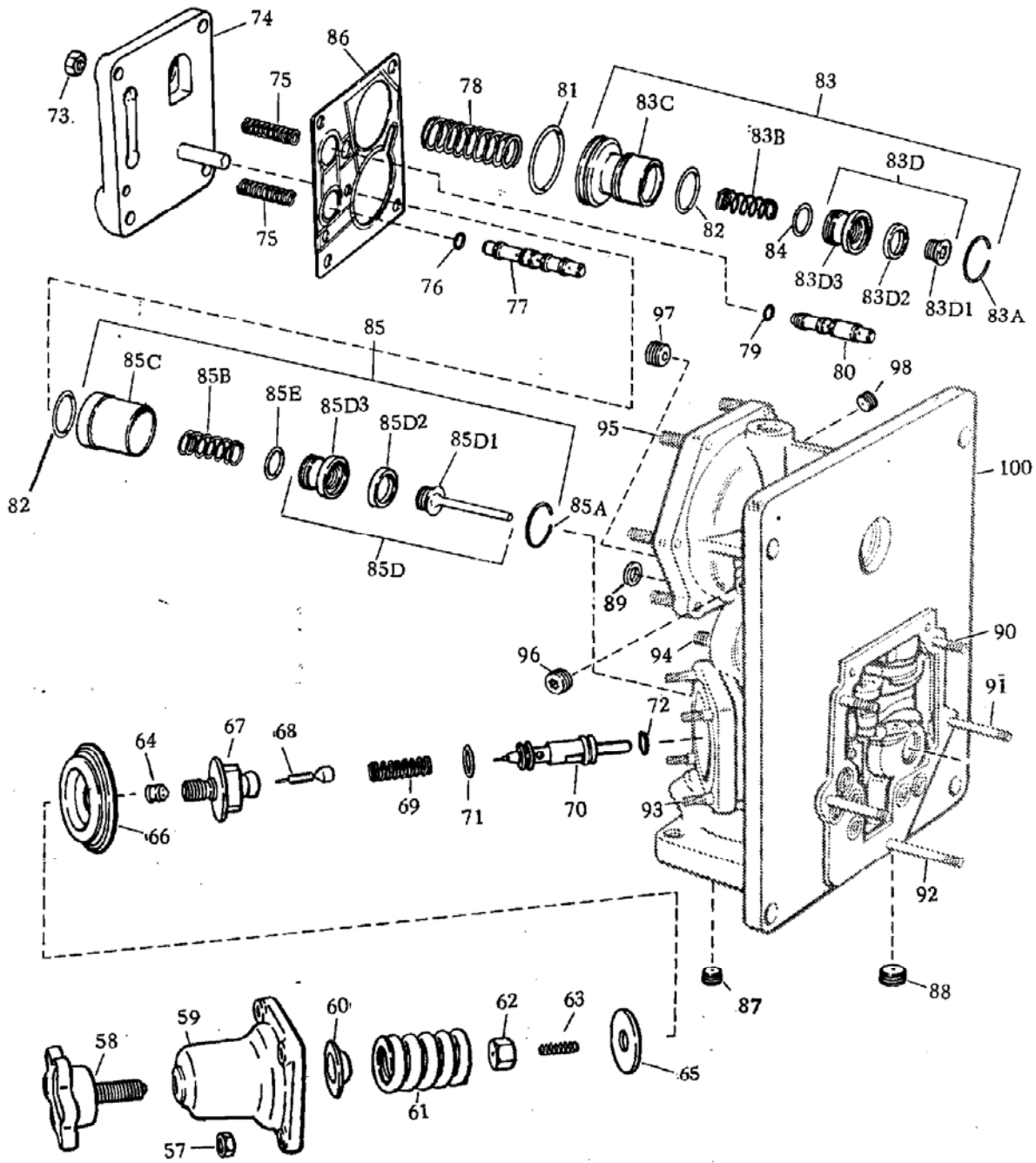


Figure 3

BRAKE VALVE PORTION — Cont'd

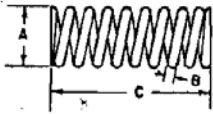
Fig. & Ref.No.	Pc.No.	Parts Name	No. Req'd
3-57	96500	..NUT, Hex., 5/16 in.	4
3-58	547361	..HANDLE, Adjusting	1
3-59	562310	..HOUSING, Spring, Regulating	1
3-60	566480	..SEAT, Spring.	1
3-61	§ 562293	..SPRING	1
3-62	560415	..SEAT, Spring (Ex. V.) (#56 Dr. .046)	1
3-63	§ 560410	..SPRING, Regulating Ex.	1
3-64	560417	..SEAT, Spring.	1
3-65	526345	..FOLLOWER, Diaphragm	1
3-66	♦ 526346	..DIAPHRAGM	1
3-67	560418	..SEAT, Ex. Valve	1
3-68	560411	..VALVE	1
3-69	§ 561135	..SPRING	1
3-70	560421	..REGULATING VALVE (Inlet Valve)	1
3-71	524935	..O-RING, 13/16 in. O.D.	2
3-72	534459	..RING, Retaining	1
3-73	502369	..NUT, Hex., 3/8 in.	4
3-74	558487	..COVER	1
3-75	§ 570511	..SPRING	2
3-76	□ ♦ 524612	..O-RING, 1/2 in. O.D.	5
3-77	558479	..VALVE, Suppression	1
3-78	§ 93070	..SPRING	1
3-79	□ ♦ 524612	..O-RING, 1/2 in. O.D.	4
3-80	558477	..VALVE, Emergency	1
3-81	□ ♦ 536582	..O-RING, 2 in. O.D.	1
3-82	□ ♦ 526388	..O-RING, 1-3/8 in. O.D.	2
3-83	558486	..BRAKE PIPE CUT-OFF VALVE, ASY.	1
3-83A	536868	..RING, Retaining	1
3-83B	§ 562295	..SPRING	1
3-83C	558485	..CAGE, Valve	1
3-83D	558448	..VALVE SEAL, ASSEMBLY	1
3-83D1	562300	...RETAINER, Seal.	1

Fig. & Ref.No.	Pc.No.	Parts Name	No. Req'd
3-83D2	♦ 557396	...SEAL	1
3-83D3	558449	...HOUSING	1
3-84	□ ♦ 524614	..O-RING, 15/16 in. O.D.	1
3-85	▼ 558481	..VENT VALVE, ASSEMBLY	1
3-85A	536868	..RING, Retaining	1
3-85B	§ 562295	..SPRING	1
3-85C	558482	..CAGE, Vent Valve	1
3-85D	558483	..VALVE SEAL, ASSEMBLY	1
3-85D1	558484	...RETAINER, Seal.	1
3-85D2	♦ 557396	...SEAL	1
3-85D3	558449	...HOUSING	1
3-85E	♦ 524614	..O-RING, 15/16 in. O.D.	1
3-86	♦ 557394	..GASKET, Back Cover	1
3-87	528323	..PLUG; Choke, 1/4 in. (.046 in. Choke) Port No. 5	1
3-88	528324	..PLUG, Choke, 3/8 in. (1/16 in. Choke) Port No. 53	1
3-89	♦ 527717	..GASKET, Ring, 9/16 in. O.D.	1
3-90	553024	..STUD, 5/16 x 1-1/2 in.	2
3-91	558549	..STUD, 5/16 x 2-1/2 in.	2
3-92	558550	..STUD, 5/16 x 3 in.	1
3-93	502673	..STUD, 5/16 x 1-3/8 in.	4
3-94	513969	..STUD, 3/8 x 1-5/8 in.	4
3-95	553024	..STUD, 5/16 x 1-1/2 in.	6
3-96	523179	..PLUG, Choke, 3/8 in. (Port "X")	1
3-97	57585	..PLUG, Choke, 3/8 in. (3/32 in.Dr.) Port No. 1	1
3-98	50716	..PLUG, Choke, 3/8 in. (1/4 in.Dr.) Port "Y"	1
3-100	558439	..BODY (Includes Ref.Nos. 1-1, -2, -3, 2-37, 3-73 and 3-88 thru 3-99.	1

- NOTES: § , For Spring Identification Table, see Page 8.
□ , Moving Parts Maintenance Details, see Page 8 for Kit.
♦ , Overhaul Maintenance Details, see Page 8 for Kit.
◄ , Not a part of the Portion, but of the Complete Device.
▼ , Includes one of Ref. No. 82.

Prices will be quoted upon application
Orders should give PIECE NUMBER and NAME of part wanted

SPRING IDENTIFICATION



The following table is shown to enable identification of the springs used in the devices cataloged herein. It is based on calculated figures and the actual spring will vary somewhat, due to the small difference in wire, coil diameter, number of turns, etc. This tabulation is intended for identification only and should not be used for any other purpose. It does not represent a specification for the springs mentioned.

Pc.No.	Approx. Out. Dia. "A" in.	Approx. Dia. Wire "B" in.	Approx. Free Height "C" in.	Approx. No. Turns ☆	Material
1367	11/32	1/16	1-11/16	17-1/2	Steel
570625	23/64	3/64	1-1/32	10	Steel
562336	5/16	1/64	1	10-1/2	Steel
562292	11/32	1/32	1-9/64	11	Steel
562295	21/32	1/16	1-17/32	6-3/4	Steel
561135	17/32	1/16	1-3/8	10-1/4	Steel
562297	7/32	1/64	29/32	15-1/2	Steel
562293	1-5/8	5/16	2-5/32	5-3/4	Steel
570511	7/16	1/16	1-35/64	11	Steel
93070	31/32	5/64	2-3/8	8	Steel
560410	7/32	1/32	15/16	14	Steel
562294	7/16	3/64	61/64	7-1/4	Steel

☆ NOTE: Number of turns for each spring counted between extreme ends of the wire.

RUBBER REPAIR KITS

We are prepared to furnish the following RUBBER REPAIR KITS for servicing the "26-C" TYPE BRAKE VALVES:

KIT, Complete, Rubber Parts for Overhaul
Maintenance Pc. 559547

KIT, Complete, Rubber Parts for Moving
Parts Maintenance Pc. 559548

NOTE: Details for each Kit are identified as follows on the appropriate page:

- ◆ Overhaul Maintenance Details
- Moving Parts Maintenance Details