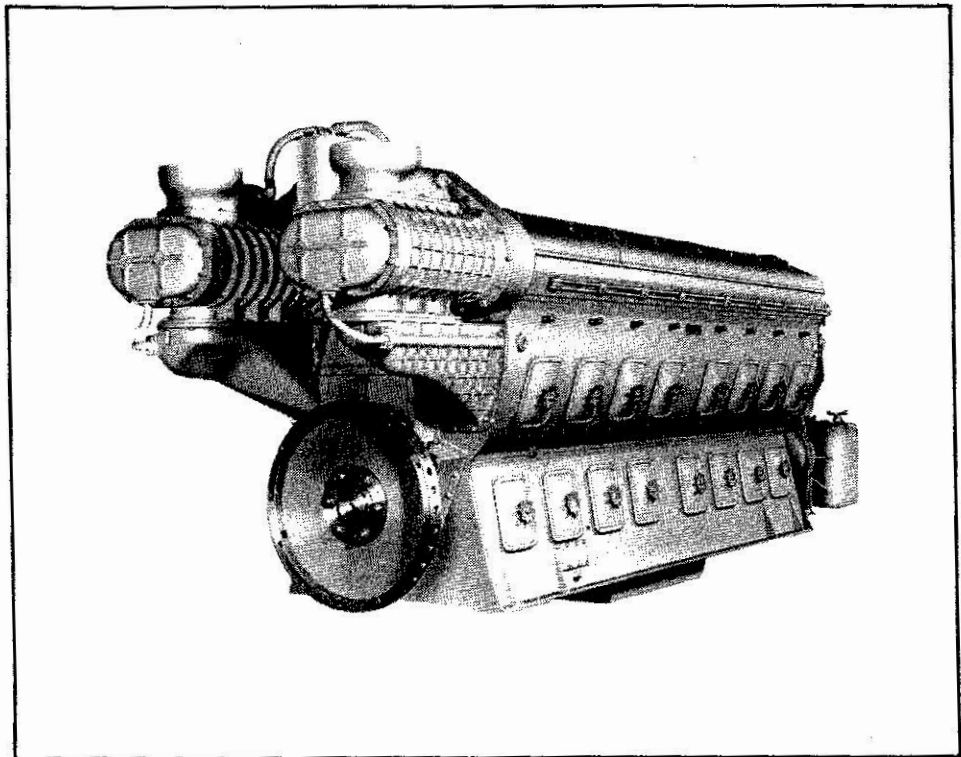


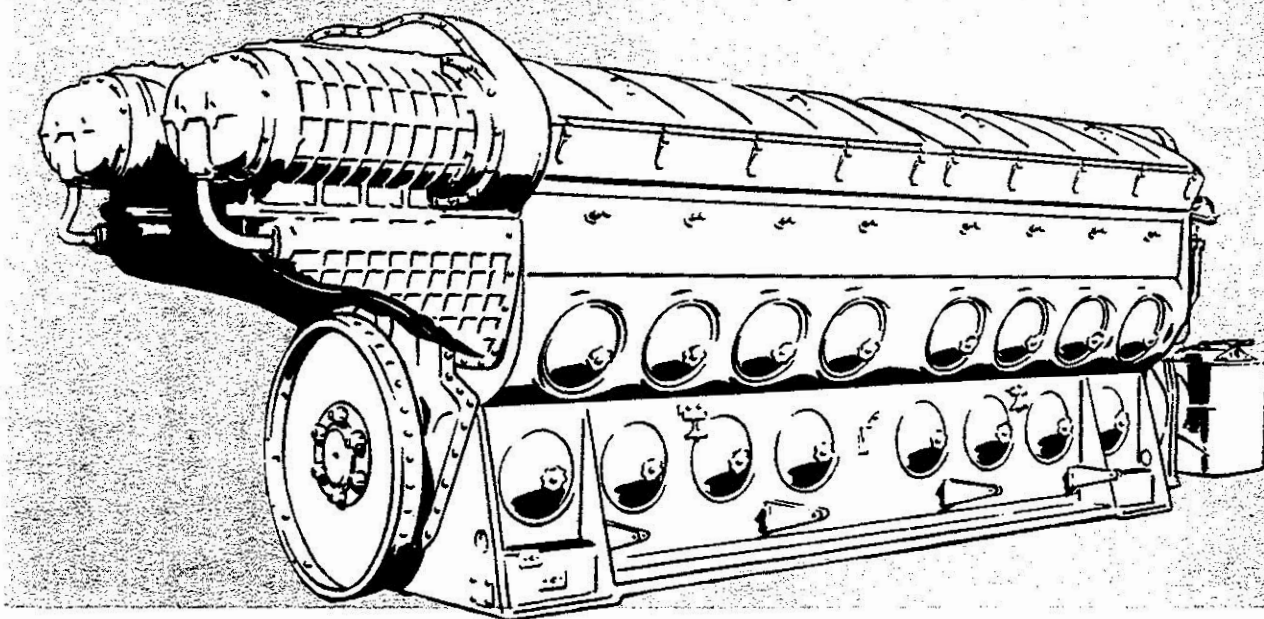


REPLACEMENT PARTS CATALOG No. 301

Diesel Engines - Models 567, A, B, BC, C and E



 
ELECTRO-MOTIVE



DIESEL ENGINES MODELS 567, A, B, BC, C, and E



REPLACEMENT PARTS CATALOG

NO. 301

JUNE, 1970

PARTS DEPARTMENT



Electro-Motive Division
La Grange, Illinois, U.S.A. 60525

INSTRUCTION PAGE

CATALOG NO. 301

With the issuance of this catalog it is our intent to provide a catalog that not only provides an ordering reference, but further indicates the interchangeability of components between the EMD engines covered by this catalog.

Replacement part ordering references for all series 567, 567A, 567AC, 567B, 567BC, 567C and 567E normally aspirated engines are contained in this catalog.

This catalog supersedes and replaces the engine section, parts list groups 300 and 400 in the following catalogs:

Catalog No. 90	Catalog No. 200
Catalog No. 70	Catalog No. 220
Catalog No. 72	Catalog No. 160
Catalog No. 85	Catalog No. 161
Catalog No. 151	Catalog No. 162
Catalog No. 151C	Catalog No. 163

Each engine application is covered by a specific table of contents, ex: Domestic Rail, Export Rail, Industrial and Marine. For convenience, page 1 of each of the table of contents has a black edging indicating which engine application is covered by the following table of contents. The table of contents also references the previous parts list number that covered the equipment now cataloged in Catalog No. 301.

Special versions of catalogs covering industrial and marine equipment have also been provided previously. These engines are now covered by this master catalog, however, the specific customer table of contents should be retained for use with Catalog No. 301. Catalogs in this category are 151, 151C, 200, 220, 160, 161, 162 and 163.

Special customer parts list index contained in Catalog Nos. 70, 72 and 85 should be retained for use in cross-referencing parts list in this catalog.

PARTS TECHNICAL SECTION
PARTS DEPARTMENT
ELECTRO-MOTIVE DIVISION
GENERAL MOTORS CORPORATION

JUNE, 1970

FOREWORD

This Replacement Parts Catalog covers parts ordering information for General Motors diesel engines.

The method of listing items in this catalog is termed, "the indented system". Indented items are components of the assembly or subassembly under which they are directly listed. This does not indicate that these items make up the full complement of parts of the assembled unit. Items not recommended for replacement are not listed. The number of components used in the assembly or subassembly is indicated in the column designated "No. Req." (number required). A dash (-) in the column indicates the indented item is not a component of that assembly. Items not covered by a part number in a parts list may be ordered by specifying on your purchase order: the parts list number, reference number and complete description of the part required.

Throughout the catalog, cross-reference between the parts listing and illustration is shown by use of reference numbers. In instances where it is difficult to illustrate all the detailed parts of a group of parts or a subassembly, the reference numbers of the parts are bracketed to indicate their location. Reference numbers not shown on an illustration are identified by an asterisk (*) preceding the reference number in the listing. The plus (+) symbol preceding the reference number indicates the listing is a repetition of that part from its prime location. The ϕ symbol preceding the reference number indicates that one or more items of different types have been used in the application. Only one of these items will be applicable.

The method of listing parts is by single-word part name wherever possible, followed by a detailed identity as to description or application. For example, "Rocker arm shaft" is listed as "Shaft .. Rocker arm".

The letter (A, B, C, etc.) or 1 in the Number Required column designates:

- 1 - Model application, or
- 2 - Subassembly application

Additional information, in note form and sub-headings is given within the parts list text to explain usage, application and items such as newly developed replacement parts and available oversize and undersize parts.

TABLE OF CONTENTS				
Rail Engines				Ver
Rail Export Engines				Ver
Industrial Engines				Ver
Marine Engines				Ver
NUMERICAL INDEX				
Desde Página	Hasta Página	Desde Part Number	Hasta Part Number	VER
1	15	909	3324787	Ver
16	30	3324789	8084407	Ver
31	45	8084407	8210003	Ver
46	63	8210003	9735480	Ver