

REPLACEMENT

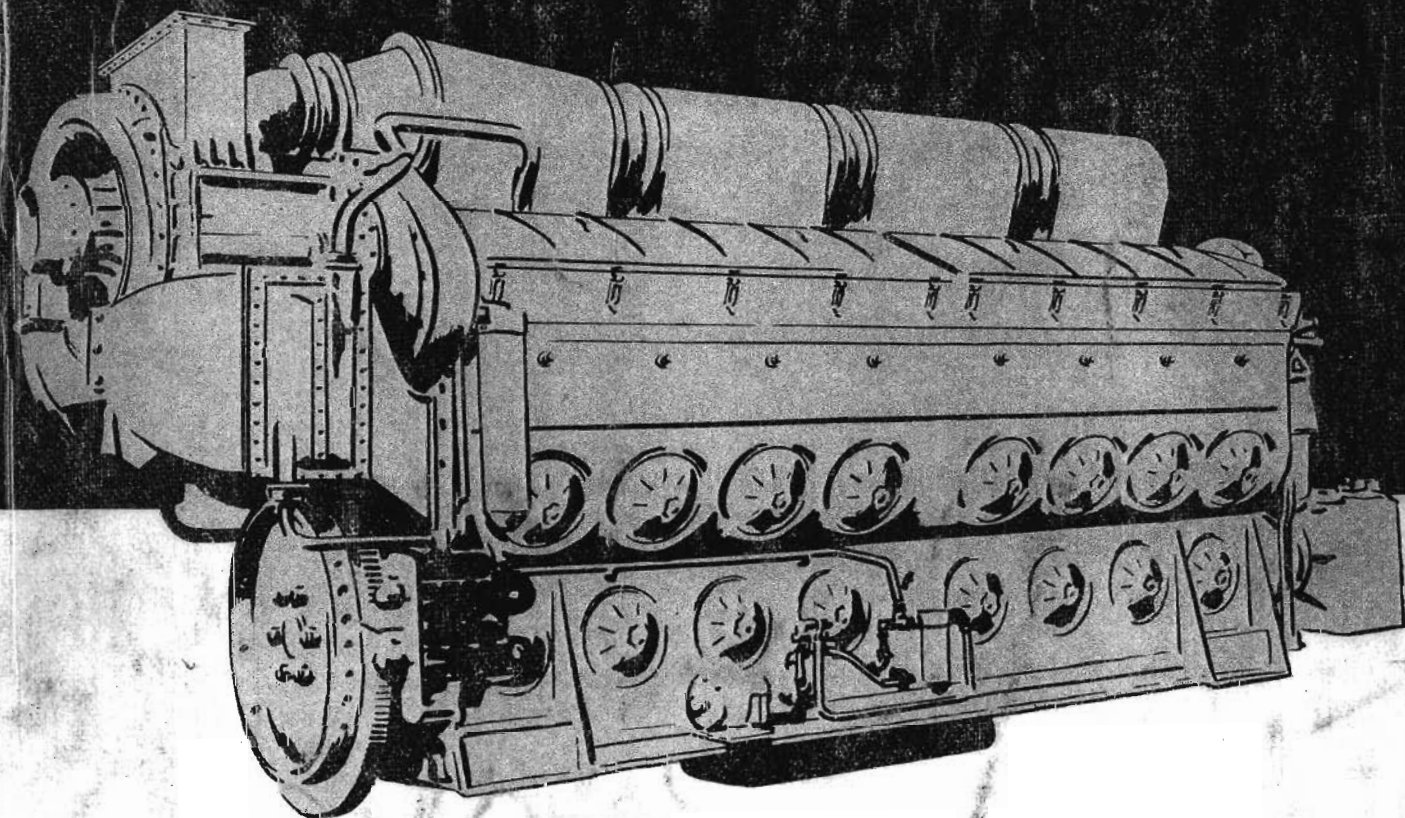
PARTS

CATALOG NO. 300

DIESEL ENGINES

MODELS 567D and 645

**SEE TABLE OF CONTENTS FOR ENGINE
MODEL DESIGNATIONS**



**5th EDITION
SEPTEMBER, 1978**

REPRESENTACIONES E INGENIERIA LTDA.

**Electro-Motive Division
LaGrange, Illinois, U.S.A.**

Casilla (P.C. Box) 10344
Fono: 633 5150 • Fax: 632 4369
• Monjitas 454 - Cf. 507 piso 5
SANTIAGO - CHILE

DIESEL ENGINES MODELS 567D and 645

**REPLACEMENT PARTS
CATALOG**

No. 300

SEPTEMBER, 1978

PARTS DEPARTMENT

DOMESTIC and EXPORT LOCOMOTIVES



Electro-Motive Division
LaGrange, Illinois, U.S.A.

FOREWORD

FORMAT AND TERMINOLOGY

This Replacement Parts Catalog provides parts ordering information for Series 567D and 645 Diesel Engines powering General Motors domestic and export locomotives.

The catalog is comprised of a series of subject groups called "Parts Lists". These parts lists are identified by a parts list number which is prefixed by an alphabetical letter. When a parts list is revised, the prefix will change in alphabetical order. For example, Parts List D134 - Lube Oil System would become Parts List E134.

The Alphabetical Index, following this Foreword, provides a quick reference to engine components and the parts lists in which they appear.

Immediately following the Alphabetical Index are the Domestic Rail and Export Rail Tables of Contents. The Table of Contents is a listing of the parts lists in numerical sequence. Under the general headings of each parts list are detailed subject descriptions, the pages in which they appear, and the applicable models. For example:

Parts List Number	Subject	Page No.	Application
D112	Injector Control Linkage	1	16-567D1,D2,D3,D3A, 8,12,16-645E,12 16,20-645E3, 16,20-645E3A Engines
	Adjusting Link and Control Lever	2	
	Control Shaft Bracket and Bearings Lever and Control Rod	3	

In addition, there is a cross reference list at the beginning of each Table of Contents relating locomotive to engine model.

By referring to the Alphabetical Index first to locate the appropriate parts list for a particular item, and then utilizing the table of contents to find the specific application and page, most engine components can easily be found in the catalog.

Located at the back of the catalog is the Numerical Index. This is a complete listing of all part numbers contained in the catalog. The part numbers are listed in numerical, parts list, page, and reference number sequence. This index can be applied when the user has a part number and wants to identify the part, where it is used, and where it is located in the catalog.

The method of listing items within a parts list is termed the "indented system". Components of an assembly are indented to the right and appear directly beneath the assembly. These items are identified by a single word part name, whenever possible, followed by a detailed description. For example:

Ref. No.	Part Number	No. Req.	Description
1	8048880	1	VALVE ASSEMBLY .. Cylinder test
2	8048883	1	BODY .. Test valve
3	8024846	1	VALVE .. Needle
4	8048884	1	NUT .. Packing

This does not mean that all the components of the assembly are cataloged. Those items which are not considered serviceable are not listed.

Items not identified by a part number in a parts list may be ordered by specifying on the purchase order; catalog number, parts list number, page number, reference number, complete description of the part and the assembly part number of which this item is a component. For example:

Ref. No.	Part Number	No. Req.	Description
1	8436302	1	PUMP ASY. .. Soak back
2		1	COVER .. Pump

Order quantity 1, pump cover, Catalog 300, Parts List C134, Page 15, Reference Number 2, applied to 8436302 soak back pump.

Illustrations which apply to a parts list are assigned plate numbers. These plate numbers carry the same group number as the parts list and are followed by a plate serial number. For example, Plate C134-1 indicates the plate is a part of parts list group 134; the prefix letter "C" indicates plate revision; and the serial number identifies the sequence of the plate within the parts list.

These illustrations are only intended to be used as a general guide for parts ordering purposes.

Additional information, in the form of subtitles, subheadings, and italicized notes, appears within the part list. This information may further describe the subject or explain design changes, modifications and newly developed replacement parts. References to Maintenance Instructions and Pointers are also included. Oversize and undersize part numbers are listed in the description column of the parts list.

The number of components used in an assembly or application are shown on the text page in the column designated "Number Required". A dash (-) in the column indicates that either the item is not a component of an assembly or application, or that the optional quantities required are shown in the description column. For example:

Ref. No.	Part Number	No. Req.	Description
1	8360846		WASHER .. Plain - 1-9/32 I.D. 8 req'd. with gen. bracket 12 req'd. without gen. bracket

The letters (A,B,C, etc.) at the top of Number Required column denote either model application or assembly application.

The Reference Number indicates the part number location in the text and identifies the part location on the illustration. Where it is difficult to illustrate all the detailed parts of a group of parts, the reference numbers are bracketed to indicate their general location. If a part is not shown on the illustration, an asterisk (*) symbol will precede the reference number in the text.

SPECIAL CATALOG SYMBOLS

1) The plus (+) symbol preceding the reference number in the text indicates that the part listing is a repetition of that part from its primary catalog location. For example:

Ref. No.	Part Number	No. Req.	Description
+12	8460738	1	DRIVE ASY. .. Auxiliary generator - See P.L. 162

While the part appears in Parts List 174 for clarity and catalog user convenience, its primary location is Parts List 162 - Auxiliary Generator Drive.

2) The option (ϕ) symbol preceding the reference number in the text means that one or more items of different types have been used in this application. This may be due to a design change or because of different supplier sources. For example:

Ref. No.	Part Number	No. Req.	Description
ϕ 10	8284598	2	CORE ASY. .. Aftercooler (Young)
ϕ 10	8529762	2	CORE ASY. .. Aftercooler (Harrison)

The option symbol here indicates that both Harrison and Young aftercooler cores are available and that either core assembly can be ordered.

3) The note (*f*) symbol preceding the reference number in the text implies that additional information regarding the part is found in the form of an italicized note within the parts list. For example:

Ref. No.	Part Number	No. Req.	Description
<i>f</i> 2	8034709	1	CRANKSHAFT ASSEMBLY .. Engine

f For crankshafts designed for bolt on accessory drive coupling, See Page 4.

4) The asterisk (*) symbol preceding the reference number in the text indicates that the part is not shown on the illustration.

INSTRUCTIONS FOR LOCATING PARTS IN THE CATALOG

1) To find the part number for a required item, refer first to the Alphabetical Index to determine the applicable parts list number. For example, if an exhaust stack for a 16-645E3 engine is required, it will be found in the Alphabetical Index under "STACK" and the appropriate parts list number is 182.

Secondly, proceed to this parts list number in the Table of Contents. The required part, its application, and the page number in the parts list where the part appears will be shown here. For example:

Parts List Number	Subject	Page No.	Application
E182	Exhaust Stack Assembly	1	16-567D2,D3,D3A, 12,16, 20-645E3, 16,20-645E3A

Finally, refer to the parts list and the page that includes the appropriate model in the model application. In our example, the part number for the exhaust stack applicable to the 16-645E3 engine will be found on Page 1.

2) If only the part number is known, proceed directly to the Numerical Index in the back of the catalog. Listed here are all the parts list, page, and reference numbers where this part number appears. Then, by referring to the parts list, the part number can be identified as to description, application, and quantity required.

TABLE OF CONTENTS

Domestic Rail Engines

Model Designation					
GP18	16-567D1	SW1500	12-645E	SD40-2	16-645E3
GP28	16-567D1	GP39	12-645E3	SD40B-2	16-645E3
SD18	16-567D1	GP39AC	12-645E3	SD40T-2	16-645E3
SD28	16-567D1	GP39-2	12-645E3	SDP40	16-645E3
GP20	16-567D2	SD39	12-645E3	SDP40F	16-645E3
SD24	16-567D3	SDL39	12-645E3	DDA40X	16-645E3A
GP30	16-567D3	GP38	16-645E	F40C	16-645E3A
GP35	16-567D3A	GP38AC	16-645E	F40PH	16-645E3A
DD35	16-567D3A	GP38-2	16-645E	F45	20-645E3
DDA35	16-567D3A	SD38	16-645E	FP45	20-645E3
SD35	16-567D3A	SD38AC	16-645E	SD45	20-645E3
SDP35	16-567D3A	SD38-2	16-645E	SD45-2	20-645E3
SW1000	8-645E	F40PH	16-645E3	SD45-2R	20-645E3
SW1001	8-645E	GP40	16-645E3	SD45T-2	20-645E3
GP15-1	12-645E	GP40-2	16-645E3	SDP45	20-645E3
MP15AC	12-645E	GP40P-2	16-645E3	SD45X	20-645E3A
MP15DC	12-645E	SD40	16-645E3		

Parts List Number	Subject	Page Number	Application
E100	Engine, Crankcase and Oil Pan Assembly	1	16-567D1,D2,D3,D3A, 8,12,16-645E, 12,16,20-645E3, 16,20-645E3A
	Engine Equipped Reference Chart	3	
	Crankcase and Oil Pan Reference Chart	4-9	
	Crankcase and Oil Pan Assembly	7	
	Oil Level Gauge	10	
	Air Box Drain Piping	11-14	
	Crankcase and Oil Pan Assembly		16-567D1,D2,D3,D3A 16-567ED1,ED2,ED3,ED3A
B103	Engine Ramp	1	16-567D1,D2
E104	Handhole Cover and Cylinder Test Valve		
	Handhole Cover Assembly	1	16-567D1
	Handhole Cover Assembly	2	16-567D1,D2,D3,D3A, 8,12,16-645E, 12,16,20-645E3
	Handhole Cover Assembly	3	12-16-645E, 12,16,20-645E3
	Handhole Cover Assembly	4	16,20-645E3A
	Cylinder Test Valve Assembly	5	16-567D1,D2,D3,D3A, 8,12,16-645E, 12,16,20-645E3, 16,20-645E3A
E106	Cylinder Head, Exhaust Valves and Cylinder Liner		
	Cylinder Head Assembly	1-2	
	Cylinder Liner Assembly	3-4	
A107	Power Pack Assemblies	1-2	
E108	Exhaust Valve Bridge, Rocker Arms and Oil Lines	1-2	16-567D1,D2,D3,D3A, 8,12,16-645E, 12,16,20-645E3, 16,20-645E3A
E110	Head and Liner Crabs, Gaskets, Seals and Elbows	1-3	
E112	Injector Control Linkage		
	Adjusting Link and Control Lever	1	
	Adjusting Link and Control Lever	2	16-645E3A
	Control Shaft Bracket and Bearing	3-4	
	Lever and Control Rod	5	
E114	Piston Assembly, Pistons, Ring Sets and Rings		
	Reference Chart	1-2	16-567D1,D2,D3,D3A, 8,12,16-645E, 12,16,20-645E3, 16,20-645E3A
	Piston Assembly, Pistons, Ring Sets and Rings	3-21	

TABLE OF CONTENTS

Parts List Number	Subject	Page Number	Application
F116	Connecting Rod, Bearings, Carrier and Piston Pin	1-2	
E118	Crankshaft, Main Bearing Shells, Main Bearing Shell Kits and Main Bearing Caps	1-3	16-567D1,D2,D3,D3A, 8,12,16-645E, 12,16,20-645E3, 16,20-645E3A
	Crankshaft, Main Bearing Shells and Main Bearing Shell Kits	1-3	
	Crankshaft Assembly Designed For Bolt On Accessory Drive Stubshaft	4	8,12,16-645E, 12,16,20-645E3
	Crankshaft Assembly Designed For Bolt On Accessory Drive Stubshaft	5	16-645E3,E3A
	Main Bearing Cap Application and Location Chart	6	16-567D1,D2,D3,D3A, 8,12,16-645E, 12,16,20-645E3, 16,20-645E3A
E120	Harmonic Balancer and Viscous Damper Assembly	1	16-567D1,D2,D3,D3A, 8,12,16-645E, 12,16,20-645E3, 16,20-645E3A
	Reference Chart	1	
	Harmonic Balancer Assembly	2	16-567D1,D2,D3,D3A, 8,12,16-645E
	Viscous Damper Assembly	3	12,16,20-645E3, 16,20-645E3A
E122	Accessory Drive Gear Assembly		
	Accessory Drive Gear Applied To Standard Crankshaft	1	16-567D1,D2,D3,D3A, 8,12,16-645E, 12-645E3
	Accessory Drive Gear Applied To Standard Crankshaft	2	16,20-645E3, 16,20-645E3A
	Accessory Drive Gear Applied To Bolt On Stubshaft	3	8,12,16-645E, 12,16,20-645E3
	Accessory Drive Gear Applied To Bolt On Stubshaft	4	16-645E3,E3A
E124	Engine To Main Generator Coupling, Ring Gear, Accessory Drive Flange and Engine Turning Jack	1-2	16-567D1,D2,D3,D3A
	Engine To Main Generator Coupling and Accessory Drive Flange	1-2	
	Engine To Main Generator Coupling Disc Reference Chart	3	8,12,16-645E, 12,16,20-645E3, 16,20-645E3A
	Main Generator Coupling and Ring Gear Mounting	4-5	8,12,16-645E, 12,16,20-645E3, 16,20-645E3A
	Main Generator Coupling and Mounting Hardware	4	
	Flywheel Indicator	4	12,16-645E, 12,16,20-645E3, 16,20-645E3A
	Ring Gear and Mounting Hardware	4	20-645E3,E3A
	Generator Alignment Indicator Bracket	4	
	Accessory Drive Coupling and Accessory Drive Blind Cover	6	8,12,16-645E, 12,16,20-645E3, 16, 20-645E3A
	Accessory Drive Coupling For Engine Crankshaft With Bolt On Stubshaft	7	16-645E3,E3A (F40C & F40PH locomotives)
	Engine Turning Jack Assembly	8	16-567D1,D2,D3,D3A, 8,12,16-645E, 12, 16,20-645E3, 16,20-645E3A
E125	Electric Starter Motor and Mounting		
	Starter Motor Mounting	1	
	Starter Motor Shield	1	8,12,16-645E, 12,16,20-645E3, 16,20-645E3A
	Electric Starter Motor	2-5	
	Solenoid Switch Assembly	6	

TABLE OF CONTENTS

Parts List Number	Subject	Page Number	Application
E126	Camshaft Drive Gear Train		
	Camshaft Drive Gear Train - Normally Aspirated Engines	1-3	16-567D1, 8,12,16-645E
	Camshaft Drive Gear Train - Turbo-charged Engines	4-7	16-567D2,D3,D3A, 12,16,20-645E3, 16-645E3A
	Camshaft Drive Gear Train	8	20-645E3A
E128	Camshaft and Camshaft Counterweights		
	Camshaft Assembly	1-3	} 16-567D1,D2,D3,D3A, 8,12,16-645E, 12,16,20-645E3, 16,20-645E3A
Camshaft Counterweights	4-6		
E130	Camshaft Bearing Bracket		
	Camshaft Bearing Bracket	1-2	} 8-645E
	Camshaft Bearing Bracket - Previous Design With 5/8 Inch Mounting Bolts and Applied To Crankcases Manufactured In 1974 and 1975	3-4	
	Camshaft Bearing Bracket - Current Design With 5/8 Inch Mounting Bolts and Applied To Crankcases Manufactured From January, 1976	5-6	
E132	Camshaft Overspeed Trip Linkage		
	Trip Pawl and Toggle Lever Bracket Assembly	1-2	16-567D1,D2,D3,D3A, 8,12,16-645E, 12,16,20-645E3, 16,20-645E3A
	Overspeed Pawl Camshaft Assembly - Previous Design	3	16-567D1,D2,D3,D3A
	Overspeed Pawl Camshaft Assembly - Current Design	4	} 16-567D1,D2,D3,D3A, 8,12,16-645E, 12,16,20-645E3, 16,20-645E3A
	Overspeed Trip and Reset Lever	5	
E134	Lube Oil System		
	Accessory End Outside Lines	1-3	16-567D1,D2,D3,D3A
	Accessory End Outside Lines	4-7	8,12,16-645E, 12,16,20-645E3, 16,20-645E3A
	Piston Cooling and Main Bearing Oil Manifold	8-9	16-567D1,D2,D3,D3A, 8,12,16-645E, 12,16,20-645E3, 16,20-645E3A
	Piston Cooling, Camshaft Stubshaft and Rocker Arm Lubricating Oil Lines	10	16-567D1, 8,12,16-645E
	Piston Cooling, Camshaft Stubshaft, Rocker Arm Lubricating Oil Lines and Turbocharger Filter	11-12	12,16,20-645E3, 16,20-645E3A
	Piston Cooling, Camshaft, Stubshaft, Rocker Arm Lubricating Oil Lines and Turbocharger Filter	13-14	16-567D2,D3,D3A
	Rear End Lines Mounting and Piping	15	16-567D1, 8,12,16-645E
	Soak Back Lube Oil System - With Threaded Connections	16-17	16,20-645E3
	Soak Back Lube Oil System - With Flanged Connections	18-20	12,16,20-645E3, 16,20-645E3A
	Turbocharger Lube Oil Piping	21-22	16-567D2,D3
	Soak Back Lube Oil Lines	23-25	16-567D2,D3,D3A
	Soak Back Lube Oil Lines	26	16-567D3
	Soak Back Lube Oil Lines	27-28	16-567D2,D3
	Soak Back Filter Assembly	29	16-567D2,D3,D3A
	Soak Back Filter Assembly - With Threaded Connections	30	16-567D2,D3,D3A, 16,20-645E3
	Soak Back Filter Assembly - With Flanged Connections	31	12,16,20-645E3, 16,20-645E3A
	Soak Back Pump Assembly - With Threaded Connections	32	16-567D2,D3,D3A, 16,20-645E3

TABLE OF CONTENTS

Parts List Number	Subject	Page Number	Application	
E134	Lube Oil System (Continued)			
	Soak Back Pump Assembly - With Flanged Connections & 1/4 H.P. Mtr.	33	12,16,20-645E3, 16-645E3A	
	Soak Back Pump Assembly - With Flanged Connections & 1/4 H.P. Mtr.	34	20-645E3A	
	Soak Back Pump Assembly - With Flanged Connections & 3/4 H.P. Mtr.	35	12,16,20-645E3, 16,20-645E3A	
	Soak Back Pump Motor	36-38	16-567D2,D3,D3A, 12,16,20-645E3, 16,20-645E3A	
	Lube Oil Sampling Valve Engine Pre-Lube Piping	39 40	12,16-645E, 16,20-645E3 16-645E3	
E136	Lube Oil Strainer	1-4	} 16-567D1,D2,D3,D3A, 8,12,16-645E, 12,16,20-645E3, 16,20-645E3A	
E138	Piston Cooling and Pressure Pump Assembly	1-8		
E140	Lube Oil Scavenging Pump Lube Oil Scavenging Pump Assembly	1-3	16-567D1,D2,D3,D3A, 8,12,16-645E, 12,16,20-645E3, 16-645E3A	
	Lube Oil Scavenging and Fuel Oil Pump Assembly	4-5	} 20-645E3A	
	Fuel Oil Pump Assembly	6		
E142	Lube Oil Separator	1	12,16,20-645E3, 16-645E3A	
	Lube Oil Separator	2	20-645E3A	
	Lube Oil Separator	3	16-567D2,D3,D3A, 12,16,20-645E3, 16-645E3A	
	Lube Oil Separator	4-7	16-567D2,D3	
	Lube Oil Separator	8-9	16-567D3	
	Lube Oil Separator	10	16-567D1, 8,12,16-645E	
	Low Profile Lube Oil Separator	11	16-645E	
	Lube Oil Separator	12	16-645E3,E3A	
E144	Cooling System Engine Cooling Lines	1-5	8,12,16-645E, 12,16,20-645E3, 16,20-645E3A	
	Aftercooler Piping Engine Cooling Lines	6	12,16,20-645E3, 16,20-645E3A	
	Parallel Flow Turbocharger Aftercooler Piping With 2 Flange Dowel Mount, Round Tube Type Aftercooler	7-8	16-567D1,D2,D3,D3A	
	Parallel Flow Turbocharger Aftercooler Piping With 4 Flange, Dowel Mount, Round Tube Type Aftercooler	9-11	16-567D3,D3A	
	Series Flow Turbocharger Aftercooler Piping With 4 Flange, Bracket Mounted, Flat Tube Type Aftercooler	12-14	16-567D3	
		15-17	16-567D3	
	E146	Water Pump	1-3	} 16-567D1,D2,D3,D3A, 8,12,16-645E, 12,16,20-645E3, 16,20-645E3A
	E148	Fuel Oil Piping	1-2	
E150	Fuel Oil Filter	1-4	16-567D1,D2,D3	
	Fuel Oil Filter	5-8	} 16-567D1,D2,D3,D3A, 8,12,16-645E, 12,16,20-645E3, 16,20-645E3A	
	Viscose To Twin Spin-On Filter Conversion	9		

TABLE OF CONTENTS

Parts List Number	Subject	Page Number	Application
E152	Fuel Injector	1-4	16-567D1,D2,D3,D3A, 8,12,16-645E, 12,16,20-645E3, 16,20-645E3A
	Fuel Injector With Calibration Slide	3	
	Injector Repair Kits	5-7	
	Fuel Injector Without Calibration Slide	6	
E154	Cylinder Head Cover and Support Frame Previous Design Square Top Inside Frame Corners	1-3	16-567D1,D2,D3,D3A, 8,12,16-645E, 16-645E3
	Current Design Round Top Inside Frame Corners	4-7	
E156	Overspeed Trip Housing and Cover	1-2	
E158	Accessory Drive Housing Assembly	1	16-567D1,D2,D3,D3A, 8,12,16-645E, 12,16,20-645E3, 16,20-645E3A
E159	Engine Crankcase Pressure Switch, Detector and Low Water Safety Shutdown Valve	1	
	Application Chart	2	
	Repair, Conversion and Installations Kits	3-4	16-567D1,D3A, 8,12,16-645E, 12,16, 20-645E3
	Low Water and Crankcase Pressure Detector With Low Water Cutoff Appl.	5-6	
	Hot Oil, Low Water and Crankcase Pressure Detector With Low Water Cutoff Application	7	12,16-645E, 12,16,20-645E3, 16,20-645E3A
	Hot Oil Shutdown Kit For Units With Engine Detectors	8	16-567D3,D3A, 12;16,20-645E3
	Hot Oil Shutdown Kit For Units Without Engine Detectors	9	16-567D2,D3
	Hot Oil Shutdown Application	10	12-645E
	Low Water Detector Application	11-12	8-645E
	Low Water Safety Shutdown Valve Application	13-14	16-567D1,D3A
	Low Water Safety Shutdown Valve Application	15	16-567D3A
	Crankcase Pressure Switch Application	16-17	16-567D2,D3
	Crankcase Pressure Switch and Low Water Safety Valve Application	18-19	16-567D3,D3A
	Pressure Switch and Low Water Safety Valve Application	20-21	16-567D1,D3A
	Hot Oil Differential Pressure Detector With Low Water Cutoff Application	22-23	12-645E,E3, 16-645E,E3,E3A, 20-645E3,E3A
	Low Water and Crankcase Pressure Detector	24-25	16-567D1,D3A, 8,12,16-645E, 12,16, 20-645E3, 16,20-645E3A
	Differential Pressure Engine Protector	26	12-645E,E3, 16-645E,E3,E3A, 20-645E3,E3A
	Low Water Safety Shutdown Valve Assembly - 1:1 Ratio	27	16-567D3,D3A
	Low Water Safety Shutdown Valve Assembly - 3:1 Ratio	28	16-567D1, 8-645E
	Shut-Off Valve Assembly		16-567D1,D3,D3A, 8,12,16-645E, 12,16,20-645E3 and 16,20-645E3A
E160	Camshaft Drive Housing and Cover	1-2	16-567D1,D2,D3,D3A, 8,12,16-645E, 12,16,20-645E3, 16,20-645E3A

TABLE OF CONTENTS

Parts List Number	Subject	Page Number	Application	
E162	Auxiliary Generator Drive Assembly	1	16-567D2,D3,D3A, 12,16,20-645E3, 16,20-645E3A	
	Auxiliary Generator Drive Assembly	2	16-567D1, 8,12,16-645E	
E166	Governor Assembly	1-2	8,12,16-645E, 12,16,20-645E3, 16-645E3A	
	Governor Reference Chart			
	Governor Plug and Adapter Kit	3		
	12 Pole Electro-Hydraulic PG Governors	4-21	8,12,16-645E, 12,16,20-645E3	
	16 Pole Electro-Hydraulic PGR Governors	22-31	8,12,16-645E	
	16 Pole Electro-Hydraulic PGR Governors	32-46	12,16,20-645E3, 16-645E3A	
D167	Governor Assembly Electro-Hydraulic PG Governors	1-18	16-567D1,D2,D3,D3A	
E168	Governor Drive Gear and Stubshaft	1	16-567D1,D2,D3,D3A, 8,12,16-645E, 12,16,20-645E3, 16,20-645E3A	
E170	Governor Drive	1		
E172	Exhaust Chamber Assembly			
	Exhaust Chambers With Straight Leg Manifolds, Heat Shields, and Water Discharge Flange	1-5	12,16,20-645E3, 16,20-645E3A	
	Exhaust Chamber and Heat Shields	6-7	16,567D2,D3,D3A	
	Spark Retention Exhaust Chamber Reference Chart	8	16-567D1, 8,12,16-645E	
	Standard Exhaust Chamber Assembly	9-10	16-567D1	
	Standard Exhaust Chamber Assembly	11	8,12-645E	
	Spark Retainer Exhaust Chamber Assembly	12	8-645E	
	Spark Retainer Exhaust Chamber Assembly	13	12-645E	
	Standard Exhaust Chamber Assembly	14	16-645E	
	Four Stack - Standard Exhaust Chamber Assembly	15	16-645E - GP38-2	
	Spark Retainer Exhaust Chamber Assembly	16	16-567D1 and 16-645E	
	Four Stack - Spark Retainer Exhaust Chamber Assembly	17	16-645E - GP38-2	
	E174	Turbocharger Application	1	16-567D2,D3,D3A, 12,16,20-645E3, 16,20-645E3A
		Turbocharger Reference Chart		
Turbocharger, Aftercooler and Air Duct Mounting		2-5	16-567D2,D3,D3A	
	Turbocharger, Aftercooler and Air Duct Mounting	6-9	12,16,20-645E3, 16,20-645E3A	
D178	Oil Bath Engine Air Filters			
	Oil Bath Panel Type Filter Assemblies	1	8-645E	
	Oil Bath Panel Type Filter Assemblies	2	12-645E	
	Air Intake Silencer Assembly	3-4	16-567D3	
	Oil Bath Filter Kit Assembly	5	16-567D1	
	Air Intake Silencer Assembly	6	16-567D2	
	Oil Bath Panel Type Filter Assembly	7	16-567D1	
	Air Intake Adapter Assembly	8	16-567D1	
	Oil Bath Air Intake Filter and Adapter	9-10	16-645E	
	Roof Mounted Oil Bath Panel Type Filter Assemblies	12	12-645E	
	Cycoil Oil Bath Air Intake Filter and Mounting	14-15	16-567D3A, 16-645E, 16,20-645E3	

TABLE OF CONTENTS

Parts List Number	Subject	Page Number	Application
D178	Oil Bath Engine Air Filters (Continued)		
	Inertial and Rotonamic Air Filter To Cycoil Oil Bath Conversion Cycoil Oil Bath Air Intake Filter	17 18-19	16-567D3,D3A 16-567D3A, 16-645E, 16,20-645E3
B180	Rotonamic and Inertial Engine Air Filters		
	Rotonamic Engine Air Filters	1-2	16-567D3
	Rotonamic Engine Air Filters	3-4	16-567D2
	Rotonamic Engine Air Filters	5-6	16-567D1
	Rotonamic Engine Air Filters Inertial Engine Air Filters	7 8	16-567D3 16-567D3A
D181	Paper and Fiberglass Engine Air Filters		
	Paper Element Engine Air Filter and Mounting	1-2	16-645E
	Paper Element Engine Air Filters and Mounting	3	12,16,20-645E3, 16-645E3A
	Paper Element Engine Air Filters and Mounting	4-7	12,16,20-645E3, 16-645E3A
	Paper Element Engine Air Filters and Mounting	8	8,12-645E
	Paper Element Engine Air Filter and Mounting	11-12	20-645E3A
	Paper and Fiberglass Element Engine Air Filters and Mounting	16	12-645E
	Paper and Fiberglass Element Engine Air Filters and Mounting	17-18	16-645E
	Fiberglass Element Engine Air Filters and Mounting	19	12-645E
	Fiberglass Element Engine Air Filters and Mounting	20-22	12-645E
	Fiberglass Element Engine Air Filters and Mounting	23	12,16,20-645E3, 16-645E3A
	Engine Air Filter Conversion Assemblies	24	16-567D3,D3A, 16-645E, 16,20-645E3, 16-645E3A
	Paper Element Engine Air Filter Kits Conversion From Cycoil, Rotonamic and Inertial To Paper Element Filters	25	16-567D3,D3A, 16,20-645E3
	Paper Air Intake Filter Elements	26 27	8,12-645E 16-567D3,D3A, 8,12,16-645E, 12,16,20-645E3, 16-645E3A
	Fiberglass Element Bag-Type Engine Air Filter Kits Conversion From Cycoil To Fiberglass Element Filters	28 29	16-567D3,D3A, 16,20-645E3, 16-645E3A 16-645E
	Indicator Warning Light Application, Mechanical and Manual Indicator and Dynamic Brake Cable Alteration Kit Assemblies	30-31	16-567D3,D3A, 16-645E, 16,20-645E3, 16-645E3A
	E182	Exhaust Stacks and Silencers Exhaust Stack Assembly	1
Exhaust Silencer Assembly		3	16-645E3
Exhaust Silencer Assembly		4	16-645E3,E3A
Exhaust Silencer Assembly		5	16-645E3
E185	Engine Blower and Support Air Duct, Blind Cover, Blower and Blower Support	1	8-645E
	Blower and Blower Support	2	16-567D1, 12,16-645E
	Engine Blower and Support	3-5	16-567D1, 8,12,16-645E
	Engine Blower Assembly	6-8	16-645E - Canadian National Railways Only

TABLE OF CONTENTS

Parts List Number	Subject	Page Number	Application
E199	Engine Gasket Kits Index Engine Gasket Kits	1-2 3-10	16-567D1,D2,D3,D3A, 8,12,16-645E, 12,16,20-645E3, 16,20-645E3A