

**REPLACEMENT**

# PARTS

**CATALOG NO. 300**

**DIESEL ENGINES  
MODELS 567D and 645**

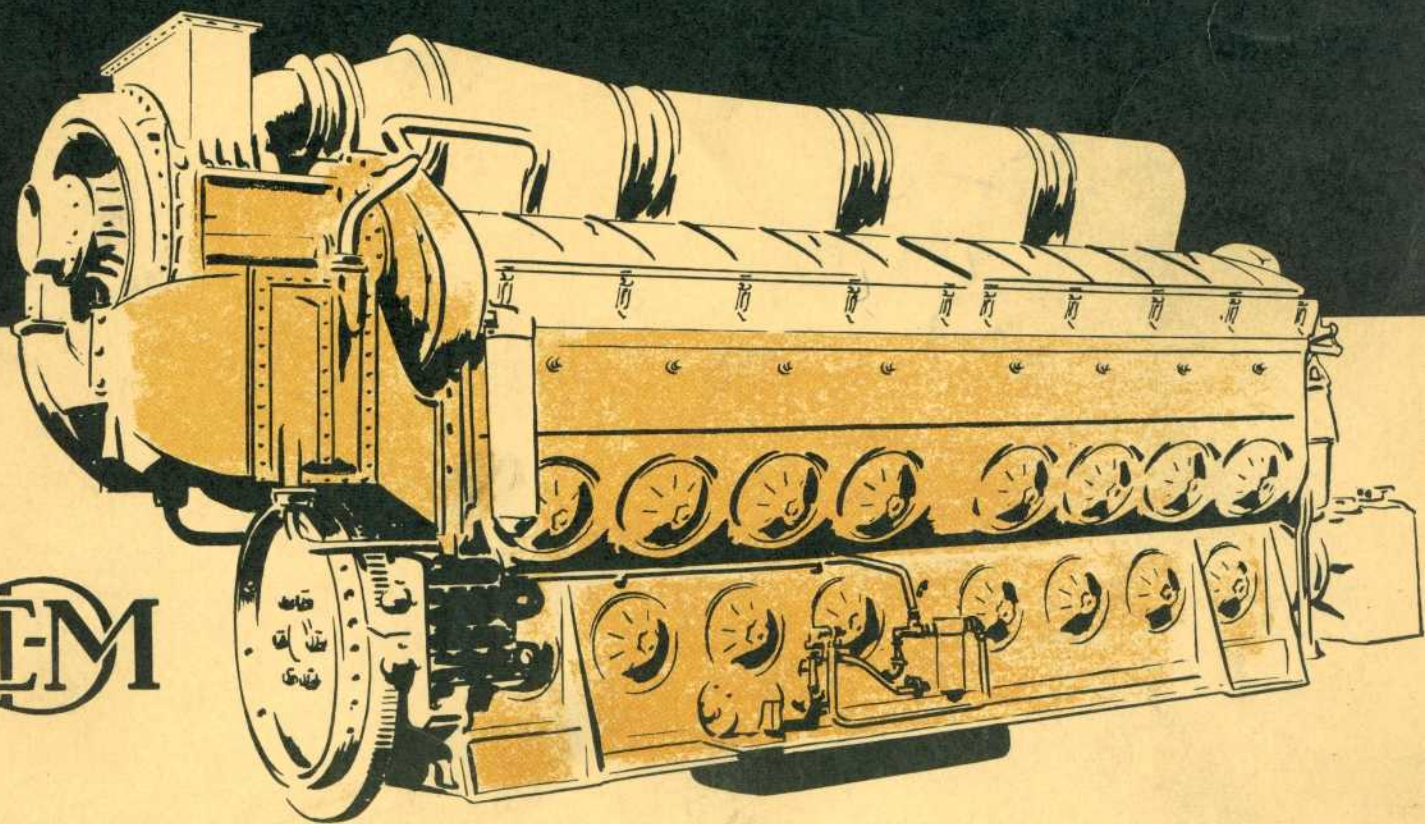
SEE P. L. 100 FOR ENGINE  
MODEL DESIGNATIONS



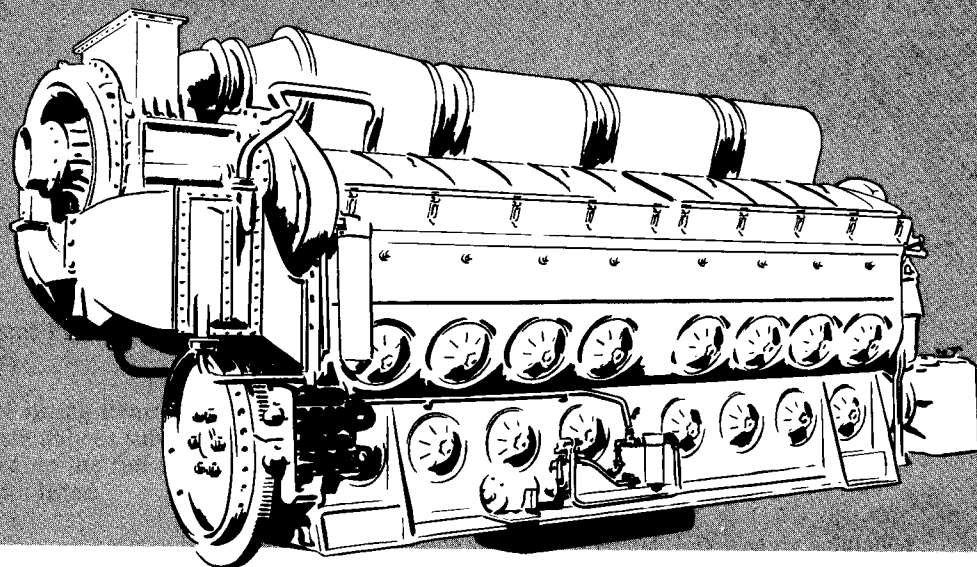
MARK OF EXCELLENCE

**Electro-Motive Division  
La Grange, Illinois, U. S. A.**

**E-M**



4th EDITION  
JANUARY, 1974



DIESEL ENGINES MODELS 567D and 645



# REPLACEMENT PARTS CATALOG

NO. 300

JANUARY, 1974

PARTS DEPARTMENT



MARK OF EXCELLENCE

Electro-Motive Division  
La Grange, Illinois, U.S.A. 60525

## FOREWORD

This Replacement Parts Catalog covers parts ordering information for General Motors series 567D and 645 diesel engines.

The method of listing items in this catalog is termed, "indented system". Indented items are components of the assembly or subassembly under which they are directly listed. This does not indicate that these items make up the full complement of parts of the assembled unit. Items not recommended for replacement are not listed.

The method of listing parts is by single-word part name wherever possible, followed by a detailed identity as to description or application. For example, "Engine water discharge elbow" is listed as "ELBOW .. Engine water discharge".

Additional information, in note form and sub-headings is given within the parts list text to explain usage, application and items such as newly developed replacement parts and available oversize and undersize parts.

The number of components used in the assembly or subassembly is indicated in the column designated, "No. Req." (number required). A dash (-) in the column indicates the indented item is not a component of that assembly.

The letter (A, B, C, etc.) in the Number Required column designates:

- 1 - Model Application
- or
- 2 - Sub-assembly Application

Items not covered by a part number in a parts list may be ordered by specifying on your purchase order: the parts list number, reference number and complete description of the part required.

Throughout the catalog, cross-reference between the parts listing and illustration is shown by use of reference numbers. Reference numbers not shown in an illustration are identified by an asterisk (\*) symbol preceding the reference number in the listing. The plus (+) symbol preceding the reference number indicates the listing is a repetition of that part from its prime location. The  $\phi$  symbol preceding the reference number indicates that one or more items of different types have been used in this application. Only one of these items will be applicable. The note (/) symbol preceding the reference number indicates that additional information is found in note form within the parts list.

Illustrations contained in this catalog are only intended to be used as a general guide for ordering replacement parts. In instances where it is difficult to illustrate all the detailed parts of a group of parts or a sub-assembly, the reference numbers of the parts are bracketed to indicate their location.

DOMESTIC RAIL

TABLE OF CONTENTS

Domestic Rail Engines

Model Designation					
GP18	16-567D1	SW1001	8-645E	SD40	16-645E3
GP28	16-567D1	SW1500	12-645E	SD40-2	16-645E3
SD18	16-567D1	GP39	12-645E3	SDP40	16-645E3
SD28	16-567D1	SD39	12-645E3	SDP40F	16-645E3
GP20	16-567D2	SDL39	12-645E3	DDA40X	16-645E3A
SD24	16-567D3	GP38	16-645E	SD45	20-645E3
GP30	16-567D3	GP38-2	16-645E	SDP45	20-645E3
GP35	16-567D3A	SD38	16-645E	F45	20-645E3
DD35	16-567D3A	SD38M	16-645E	FP45	20-645E3
DDA35	16-567D3A	SDP38	16-645E	SD45	20-645E3
SD35	16-567D3A	SD38-2	16-645E	SD45-2	20-645E3
SDP35	16-567D3A	GP40	16-645E3	SD45T-2	20-645E3
SW1000	8-645E	GP40-2	16-645E3	SD45X	20-645E3A

Parts List Number	Subject	Page Number	Application
D100	Engine, Crankcase and Oil Pan Assembly	1	16-567D1,D2,D3,D3A,8,12,16-645E,12,16,20-645E3,16,20-645E3A
	Engine Equipped Reference Chart	2	
	Crankcase and Oil Pan Reference Chart	3-7	
	Crankcase and Oil Pan Assembly	5	
	Oil Level Gauge	5-6	
	Air Box Drain Equipment	6	
	Opposed Flow Air Box Drain Restriction Device Kit	8	
	Air Box Drain Piping	9-12	
A103	Engine Ramp	1	16-567D1,D2
D104	Handhole Cover and Cylinder Test Valve	1	16-567D1, D2, D3, D3A, 8, 12, 16-645E, 12, 16, 20-645E3, 16, 20-645E3A
	Handhole Cover Assembly	2	
	Handhole Cover Assembly	3	
	Handhole Cover Assembly	4	
	Cylinder Test Valve Assembly	5	
D106	Cylinder Head, Exhaust Valves, Cylinder Liner, and Power Pack Assemblies	1-2	16-567D1, D2, D3, D3A, 8, 12, 16-645E, 12, 16, 20-645E3, 16, 20-645E3A
	Cylinder Head Assembly	3-4	
	Cylinder Liner Assembly	4	
D108	Exhaust Valve Bridge, Rocker Arms and Oil Lines	1-2	
D110	Head and Liner Crabs, Gaskets, Seals and Elbows	1-2	
D112	Injector Control Linkage	1	16-567D1, D2, D3, D3A, 8, 12, 16-645E, 12, 16, 20-645E3, 16, 20-645E3A
	Adjusting Link and Control Lever	2	
	Control Shaft Bracket and Bearings Lever and Control Rod	3	
D114	Piston Assembly, Pistons, Rings and Ring Sets	1-11	
E116	Connecting Rod, Bearings, Carrier and Piston Pin	1-2	

TABLE OF CONTENTS

Parts List Number	Subject	Page Number	Application
D118	Crankshaft and Main Bearing Shells	1-3	16-567D1,D2,D3,D3A,8,12,16-645E, 12,16,20-645E3 and 16,20-645E3A
	Crankshaft Designed for Bolt on Accessory Drive Stubshaft	4	12-645E,16-645E,E3 and 20-645E3
D120	Harmonic Balancer Assembly	1	16-567D1,D2,D3,D3A,8,12,16-645E
C121	Engine Damper Assembly	1	12,16,20-645E3 and 16,20-645E3A
D122	Accessory Drive Gear Assembly	1	8,12,16-645E,12-645E3 and 16-567D1,D3, D3 and D3A
	Accessory Drive Gear Assembly	2	16,20-645E3,16-20-645E3A
	Bolt On Accessory Drive Coupling To Crankshaft	3	12-645E,16-645E,E3 and 20-645E3
D124	Engine To Main Generator Coupling, Ring Gear, Auxiliary Drive Flange, and Engine Turning Jack	1-2	16-567D1,D2,D3,D3A
	Engine To Main Generator Coupling, Ring Gear, Auxiliary Drive Flange and Engine Turning Jack	3	8,12,16-645E,12,16,20-645E3,16, 20-645E3A
	Engine To Main Generator Coupling Disc Reference Chart	3-5	
	Main Generator Coupling, Auxiliary Drive Coupling and Mounting Hardware	4	16-645E,16,20-645E3,16,20-645E3A
	Ring Gear and Mounting Hardware	4	8,12,16-645E,12,16,20-645E3,16,20-645E3A
	Flywheel Indicator	4	20-645E3,E3A
	Generator Alignment Indicator Bracket Engine Turning Jack Asy.	6	16-567D1,D2,D3,D3A,8,12,16-645E,12,16, 20-645E3 and 16,20-645E3A
D125	Electric Starter Motor and Mounting	1	16,20-645E3,16,20-645E3A
	Starter Motor Mounting	2-5	
	Electric Starter Motor Solenoid Switch	6	
D126	Camshaft Drive Gear Train	1-3	16-567D1,8,12,16-645E
	Camshaft Drive Gear Train	4-6	16-567D2,D3,D3A,12,16,20-645E3,16-645E3A
	Camshaft Drive Gear Train	7	20-645E3A
	Camshaft Drive Gear Train	7	20-645E3A
D128	Camshaft and Camshaft Counterweights	1-3	16-567D1,D2,D3,D3A,8,12,16-645E,12,16, 20-645E3,16,20-645E3A
	Camshaft Assembly	4-6	
D130	Camshaft Bearing Bracket	1-3	16-567D1,D2,D3,D3A,8,12,16-645E, 12,16,20-645E3,16,20-645E3A
D132	Camshaft Overspeed Trip Linkage	1-2	16-567D1,D2,D3,D3A,8,12,16-645E, 12,16,20-645E3,16,20-645E3A
	Trip Pawl and Toggle Lever Bracket Assembly	3	
	Overspeed Pawl Camshaft Assembly	4	
	Overspeed Pawl Camshaft Assembly	4	
	Overspeed Trip and Reset Lever	5	
D134	Lube Oil System	1-3	16-567D1,D2,D3,D3A
	Accessory End Outside Lines	4-7	8,12,16-645E,12,16,20-645E3 16,20-645E3A

## TABLE OF CONTENTS

Parts List Number	Subject	Page Number	Application
D134	Lube Oil System		
	Piston Cooling and Main Bearing Oil Manifold	8-9	16-567D1,D2,D3,D3A,8,12,16-645E,12,16,20-645E3,16,20-645E3A
	Piston Cooling, Camshaft Stubshaft and Rocker Arm Lubricating Oil Lines	10	8,12,16-645E and 16-567D1
	Piston Cooling, Camshaft Stubshaft, Rocker Arm Lubricating Oil Lines and Turbo-charger Filter	11-12	12,16,20-645E3,16,20-645E3A
	Piston Cooling, Camshaft Stubshaft, Rocker Arm Lubricating Oil Lines and Turbo-charger Filter	13-14	16-567D2,D3,D3A
	Rear End Lines Mounting and Piping	15	8,12,16-645E and 16-567D1
	Soak Back Lube Oil System - With Threaded Connections	16-17	16,20-645E3
	Soak Back Lube Oil System - With Flanged Connections	18-20	12,16,20-645E3,16,20-645E3A
	Turbocharger Lube Oil Piping	21-22	16-567D2,D3
	Soak Back Lube Oil Lines	23-25	16-567D2,D3,D3A
	Soak Back Lube Oil Lines	26	16-567D3
	Soak Back Lube Oil Lines	27-28	16-567D2,D3
	Soak Back Filter Assembly	29	16-567D2,D3,D3A
	Soak Back Filter Assembly - With Threaded Connections	30	16-567D2,D3,D3A,16,20-645E3
	Soak Back Filter Assembly - With Flanged Connections	31	12,16,20-645E3,16,20-645E3A
	Soak Back Pump Assembly - With Threaded Connections	32	16-567D2,D3,D3A,16,20-645E3
	Soak Back Pump Assembly - With Flanged Connections	33	12,16,20-645E3,16-645E3A
	Soak Back Pump Assembly - With Flanged Connections	34	20-645E3A
	Soak Back Pump Motor Assembly	35-37	16-567D2,D3,D3A,12,16,20-645E3,16,20-645E3A
	Lube Oil Sampling Valve	38	12,16-645E,16,20-645E3
D136	Lube Oil Strainer	1-3	16-567D1,D2,D3,D3A,8,12,16-645E,12,16,20-645E3,16,20-645E3A
D138	Lube Oil Pressure Pump	1-4	
D140	Lube Oil Scavenging Pump	1-3	16-567D1,D2,D3,D3A,8,12,16-645E,12,16,20-645E3,16,20-645E3A
	Lube Oil Scavenging Pump Assembly		
	Lube Oil Scavenging and Fuel Oil Pump Assembly	4-6	20-645E3A
D142	Lube Oil Separator		
	Lube Oil Separator	1	12,16,20-645E3,16-645E3A
	Lube Oil Separator	2	20-645E3A
	Lube Oil Separator	3	16-567D2,D3,D3A,12,16,20-645E3,16-645E3A
	Lube Oil Separator	4-7	16-567D2,D3
	Lube Oil Separator	8-9	16-567D3
	Lube Oil Separator	10	8,12,16-645E,16-567D1
	Low Profile Lube Oil Separator	11	16-645E
D144	Cooling System		
	Engine Cooling Lines	1-4	8,12,16-645E,12,16,20-645E3,16,20-645E3A
	Aftercooler Piping	5	12,16,20-645E3,16,20-645E3A
	Engine Cooling Lines	6-7	16-567D1,D2,D3,D3A
	Parallel Flow Turbocharger Aftercooler Piping with 2 Flange, Dowel Mount, Round Tube Type Aftercooler	8-10	16-567D3,D3A

## TABLE OF CONTENTS

Parts List Number	Subject	Page Number	Application
D144	Cooling System		
	Parallel Flow Turbocharger Aftercooler Piping With 4 Flange, Dowel Mount, Round Tube Type Aftercooler	11-13	16-567D3
D144	Series Flow Turbocharger Aftercooler Piping With 4 Flange, Bracket Mounted, Flat Tube Type Aftercooler	14-16	16-567D3
	Water Pump	1-2	16-567D1,D2,D3,D3A,8,12,16-645E,12,16,20-645E3,16,20-645E3A
D148	Fuel Oil Piping	1-2	
D150	Fuel Oil Filter	1-4	16-567D1,D2,D3,D3A
	Fuel Oil Filter	5-6	16-567D1,D2,D3,D3A,8,12,16-645E,12,16,20-645E3,16,20-645E3A
D152	Fuel Injector		
	Fuel Injector With Calibration Slide	1-3	16-567D1,D2,D3,D3A,8,12,16-645E,12,16,20-645E3,16,20-645E3A
D152	Fuel Injector Without Calibration Slide	4-6	16-567D1,D2,D3,D3A
	D154	Cylinder Head Cover and Support Frame Previous Design Square Top Inside Frame Corners	1-3
Current Design Round Top Inside Frame Frame Corners		4-6	16-567D1,D2,D3,D3A,8,12,16-645E,12,16,20-645E3,16,20-645E3A
D156	Overspeed Trip Housing and Cover	1-2	16-567D1,D2,D3,D3A,8,12,16-645E,12,16,20-645E3,16,20-645E3A
D158	Accessory Drive Housing Assembly	1	
D159	Engine Crankcase Pressure Switch, Detector and Low Water Safety Shutdown Valve Repair, Conversion and Detector Installation Kits	1	16-567D1,D3A,8,12,16-645E,12,16,20-645E3,16,20-645E3A
	Current Design Low Water and Crankcase Pressure Detector With Low Water Cutoff	2-3	16-567D1,D3A,8,12,16-645E,12,16,20-645E3
	Hot Oil, Low Water and Crankcase Pressure Detector With Low Water Cutoff	4-5	12,16-645E,12,16,20-645E3,16,20-645E3
	Hot Oil Shutdown Kit for Units With Engine Detectors	6	16-567D3,D3A,12,16,20-645E3
	Hot Oil Shutdown Kit For Units Without Engine Detectors	7	16-567D2,D3
	Hot Oil Shutdown Application	8	12-645E
	Low Water Detector Application	9	8-645E
	Low Water Safety Shutdown Valve Application	10-13	16-567D1,D3A
	Crankcase Pressure Switch Application	14	16-567D2,D3
	Crankcase Pressure Switch and Low Water Safety Valve Application	15-16	16-567D1,D3,D3A
	Crankcase Pressure Switch and Low Water Safety Valve Application	17-18	16-567D1,D3A
	Low Water and Crankcase Pressure Detector	19-20	16-567D1,D3A,8,12,16-645E,12,16,20-645E3,16,20-645E3A
	Low Water Safety Shutdown Valve Asy.	21	16-567D1,D3A
	Low Water Safety Shutdown Valve Asy.	22	8-645E

## TABLE OF CONTENTS

Parts List Number	Subject	Page Number	Application
D159	Engine Crankcase Pressure Switch, Detector and Low Water Safety Shutdown Valve Shutoff Valve Assembly	23	16-567D1,D3,D3A,8,12,16-645E,12,16,20-645E3, 16,20-645E3A
D160	Camshaft Drive Housing and Cover	1-2	16-567D1,D2,D3,D3A,8,12,16-645E, 12,16,20-645E3,16,20-645E3A
D162	Auxiliary Generator Drive Assembly	1-2	16-567D2,D3,D3A,12,16,20-645E3,16,20-645E3A
	Auxiliary Generator Drive Assembly	3-4	16-567D1,8,12,16-645E
D166	Governor Assembly - Electro-Hydraulic PG	1-43	8,12,16-645E,12,16,20-645E3,16-645E3A
C167	Governor Assembly - Electro-Hydraulic PG	1-19	16-567D1,D2,D3,D3A
D168	Governor Drive Gear and Stubshaft	1	16-567D1,D2,D3,D3A,8,12,16-645E,12,16,20-645E3,16,20-645E3A
D170	Governor Drive	1-2	
D172	Exhaust Chamber Assembly		
	Exhaust Chambers With Straight Leg Manifolds and Heat Shields	1-3	12,16,20-645E3,16,20-645E3A
	Exhaust Chamber and Heat Shields	4-5	16-567D2,D3,D3A
	Spark Retention Manifold Reference Chart	6	16-567D1,8,12,16-645E
	Exhaust Chamber Assembly	7-8	16-567D1
	Standard Exhaust Chamber Assembly	9	8,12-645E
	Standard Exhaust Chamber Assembly	10	16-645E
	Four Stack Engine Manifold	11	16-645E - GP38-2
Exhaust Chamber Assembly	14	12-645E - MP15	
D174	Turbocharger Application		
	Turbocharger Reference Chart	1	16-567D2,D3,D3A,12,16,20-645E3,16,20-645E3A
	Turbocharger, Aftercooler and Duct Mounting	2-5	16-567D2,D3,D3A
	Turbocharger, Aftercooler and Duct Mounting	6-9	12,16,20-645E3,16,20-645E3A
C178	Engine Air Intake Filters		
	Oil Bath Panel Type	1	8-645E - SW1000,1001
	Oil Bath Panel Type	2	12-645E - SW1500
	Air Intake Silencer Assembly	3-4	16-567D3 - SD24
	Oil Bath Filter Kit Assembly	5	16-567D1 - GP18
	Air Intake Silencer Assembly	6	16-567D2 - GP20
	Oil Bath Panel Type Filter	7	16-567D1 - GP18,SD18
	Air Intake Adapter Assembly	8	16-567D1 - GP28,SD28
	Air Intake Filter and Adapter	9-10	16-645E - GP38,GP38AC,GP38-2,SD38
A180	Rotonamic Engine Air Filters		
	Rotonamic Engine Air Filter	1-2	16-567D3 - SD24
	Rotonamic Engine Air Filter	3-4	16-567D2 - GP20
	Rotonamic Engine Air Filter	5-6	16-567D1 - GP18,SD18
C181	Cycoil, Rotonamic, Inertial, Paper and Fiberglass Engine Air Filters		
	Cycoil Oil Bath Air Intake Filter and Mounting	1-2	16-567D3A,16-645E,16,20-645E3
	Inertial and Rotonamic Air Filter To Cycoil Oil Bath Conversion	4	16-567D3,D3A - GP30,GP35,DD35 DDA35,SD35,SDP35
	Cycoil Oil Bath Air Intake Filter Asy.	5-6	16-567D3A,16-645E,16,20-645E3
	Rotonamic Air Filter	7	16-567D3 - GP30
Inertial Air Filter Assembly	8	16-567D3A - GP35,DD35,DDA35,SD35,SDP35	

## TABLE OF CONTENTS

Parts List Number	Subject	Page Number	Application
C181	Cycoil, Rotonamic, Inertial, Paper and Fiberglass Engine Air Filters	9-10	16-645E - GP38,SD38
	Paper Element Engine Air Filter and Mounting		
	Paper Element Engine Air Filter and Mounting	11-12	16-645E - GP38-2,SD38-2
	Paper Element Engine Air Filter and Mounting	13	16,20-645E3
	Paper Element Engine Air Filter and Mounting	14-17	12,16,20-645E3,16-645E3A
	Paper Element Engine Air Filter and Mounting	19-20	20-645E3A
	Disposable Fiberglass Engine Air Filter	21	12-645E - SW1500 and MP15
	Fiberglass Element Engine Air Filter and Mounting	22	16,20-645E3
	Fiberglass Element Engine Air Filter Engine Air Filter Conversion Assemblies - Index	23-24	16-645E - GP38-2,SD38-2
	Paper Element Engine Air Filter Kits	25	16-567D3,D3A,16,20-645E3,16-645E3A
	Paper Air Intake Filter Elements	26	16-567D3,D3A,16-20-645E3
		27	16-567D3,D3A,16-645E,12,16,20-645E3,16-645E3A
	Fiberglass Element Bag Type Engine Air Filter Kits	28	16-567D3,D3A,16,20-645E3,16-645E3A,
	Indicator Warning Light Application Mechanical and Manual Indicator, and Dynamic Brake Cable Alteration Kit Assemblies	29-30	16-567D3,D3A,16,20-645E3,16-645E3A
	D182	Exhaust Stack Assembly	1
Exhaust Stack Assembly			
	Exhaust Silencer Assembly	3	16-645E3 - SDP40F
D185	Engine Blower and Support	1	8-645E
	Air Duct, Blind Cover, Blower and Blower Support		
	Blower and Blower Support		
	Engine Blower Assembly	2	16-567D1,12,16-645E
		3-5	16-567D1,8,12,16-645E
D199	Engine Gasket Kits	1-11	16-567D1,D2,D3,D3A,8,12,16-645E,12,16,20-645E3,16,20-645E3A